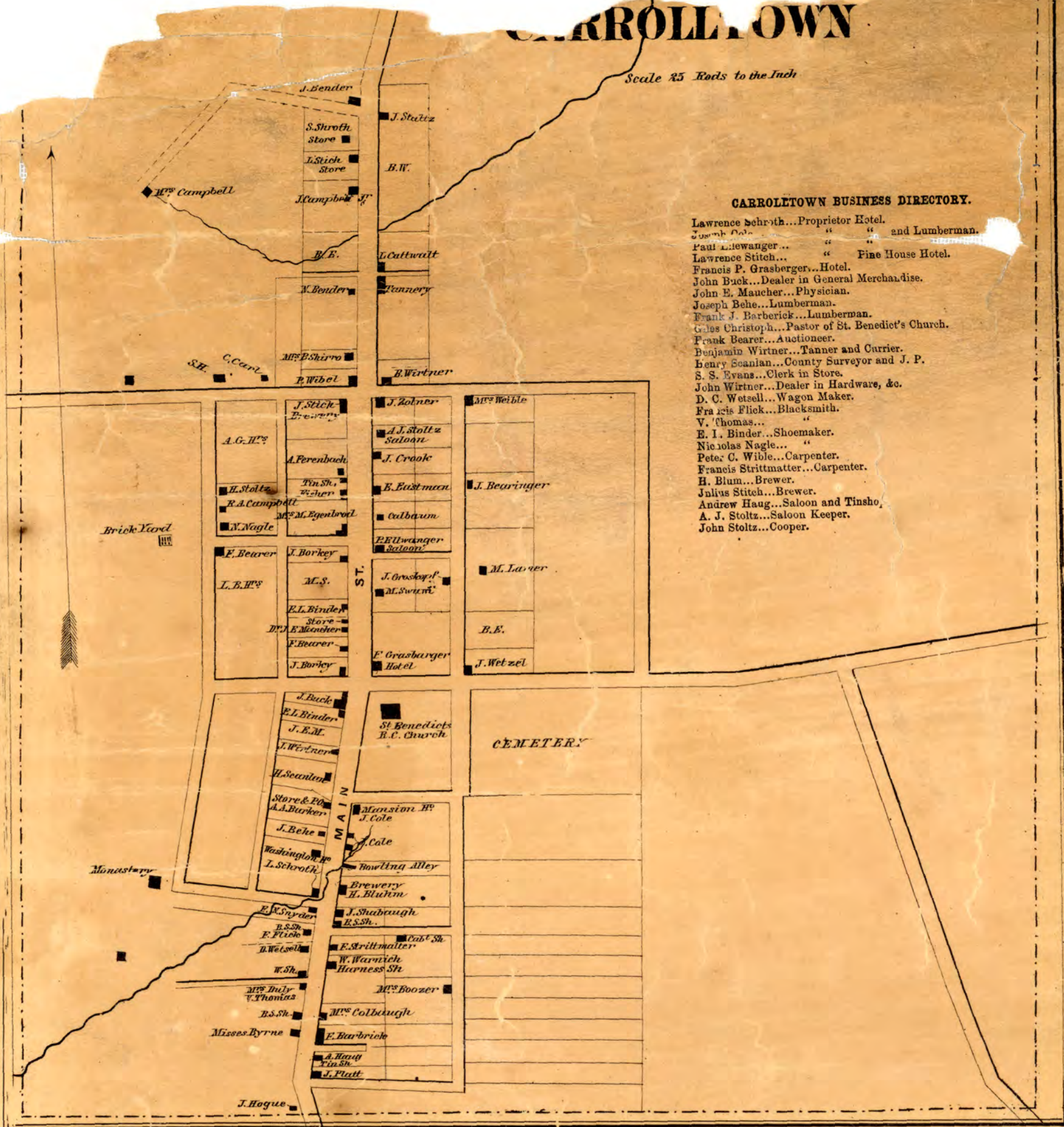


CARROLLTOWN

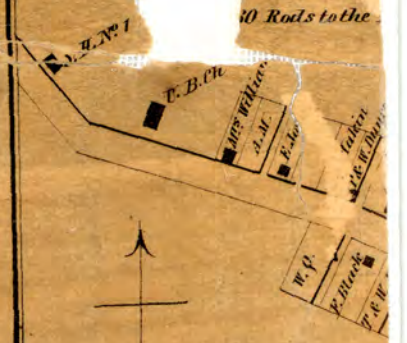
Scale 45 Rods to the Inch



CARROLLTOWN BUSINESS DIRECTORY.

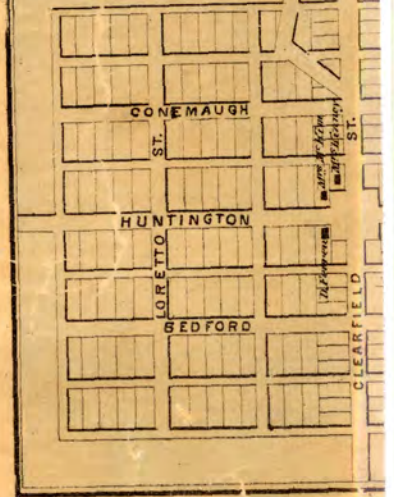
Lawrence Behrth...Proprietor Hotel.
 Joseph Cole... " " and Lumberman.
 Paul Liewanger... " " " " " " " "
 Lawrence Stitch... " " " " " " " "
 Francis P. Grasberger...Hotel.
 John Buck...Dealer in General Merchandise.
 John E. Maucher...Physician.
 Joseph Behe...Lumberman.
 Frank J. Barberick...Lumberman.
 Gales Christoph...Pastor of St. Benedict's Church.
 Frank Bearer...Auctioneer.
 Benjamin Wirtner...Tanner and Currier.
 Henry Scanlan...County Surveyor and J. P.
 S. S. Evans...Clerk in Store.
 John Wirtner...Dealer in Hardware, &c.
 D. C. Wetzel...Wagon Maker.
 Francis Flick...Blacksmith.
 V. Thomas... " "
 E. I. Binder...Shoemaker.
 Nicholas Nagle... " "
 Peter C. Wible...Carpenter.
 Francis Strittmatter...Carpenter.
 H. Blum...Brewer.
 Julius Stitch...Brewer.
 Andrew Haug...Saloon and Tinshop.
 A. J. Stoltz...Saloon Keeper.
 John Stoltz...Cooper.

BELSAO



BELSAO BUSINESS DIRECTORY.
 T. & W. Duncan...Merchants.
 James Davis...Carpenter.
 T. E. Empfield... " "
 Oliver Reese... " "
 Ferguson Black...Cooper.
 Adam Makin...Farmer.
 E. S. Jones... " "

Scale 40 Rods to the Inch



MAP OF CAMBERIA CO PENNSYLVANIA

From actual Surveys & Official Records by
D. G. BEERS,
 ASSISTED BY J. H. GOODHUE & F. B. ROE.
 Published by

