

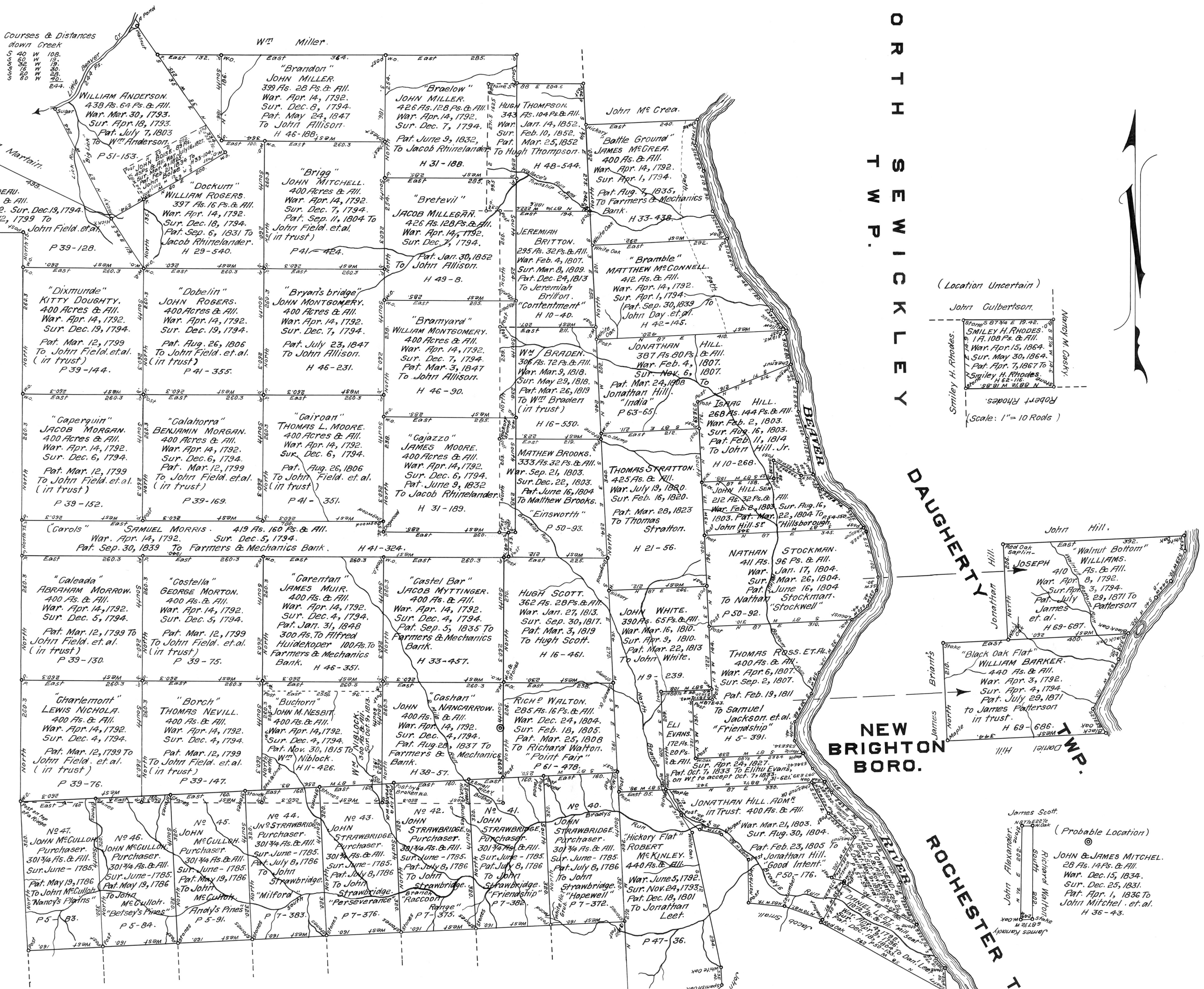
B I G B E A V E R T W P.

N O R T H S E W I C K L E Y T W P.

S O U T H B E A V E R T W P.

B R I G H T O N T W P.

T W P.



In Testimony, That the above is a connected draft of all the tracts of land situated in the townships of Chippewa, White and Patterson and county of Beaver, constructed from and compared with the original drafts remaining on file in the Department of Internal Affairs of Pennsylvania and that the warrants, surveys and patents bear date respectively as above set forth, I have hereunto set my hand and caused the Seal of the said Department to be affixed, the fourth day of December Anno Domini 1929.



John T. Woodward
Secretary of Internal Affairs

**CHIPPEWA, WHITE
AND
PATTERSON
TOWNSHIPS**

Scale 1" = 100 Rods.
WILLIAM F. MOORE
Director Land Records.