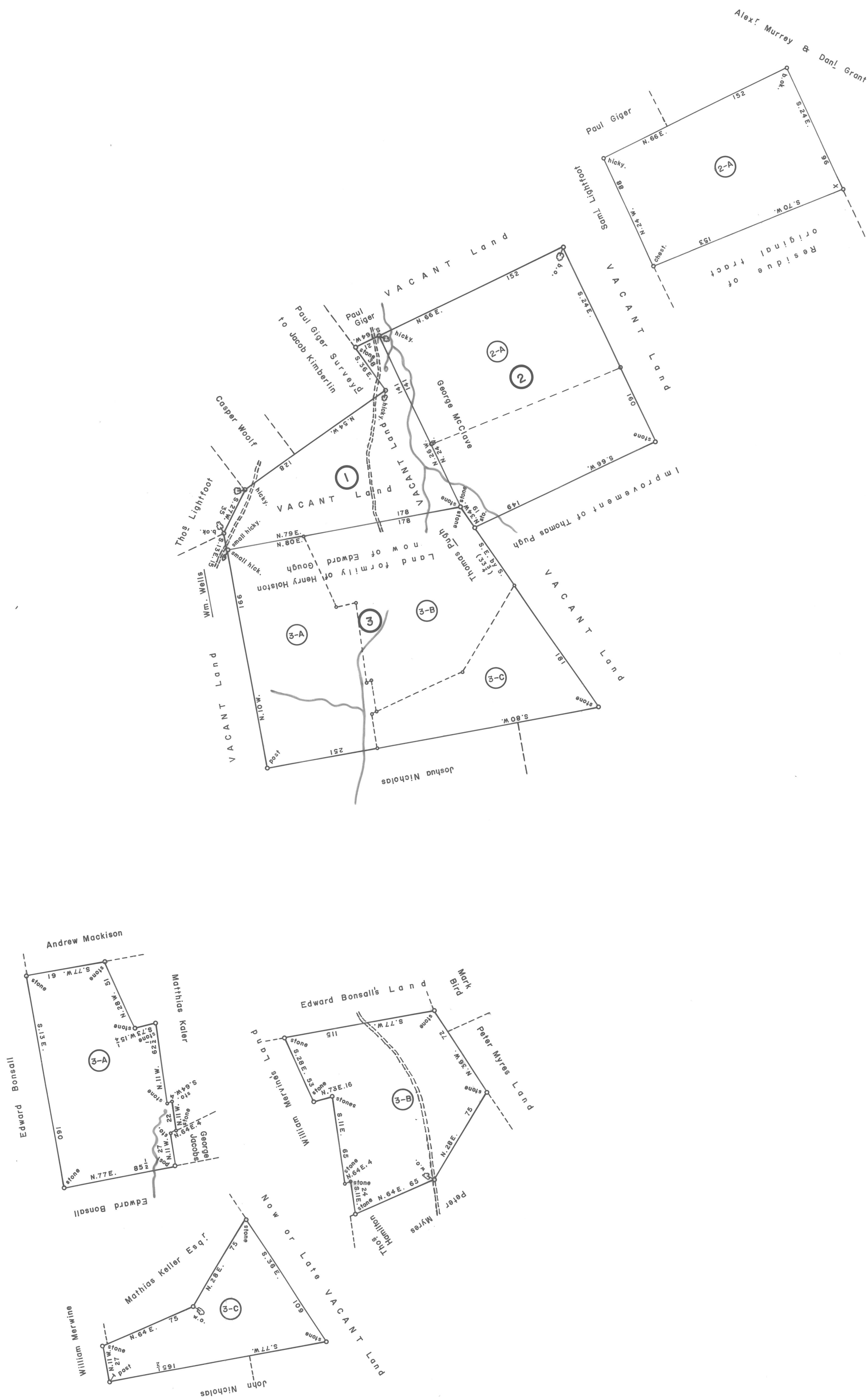


Scale: 1" = 50 Rods



①
A — 20 — 109
SAMUEL LIGHTFOOT
71 ACRES & Allowance
WARRANT MAY 8, 1770
SURVEY DEC. 1, 1770
(UNPATENTED AT THIS DATE)

②
A — 21 — 25
GEORGE MCCLAVE
143 ACRES & Allowance
WARRANT JAN. 24, 1752
SURVEY MAR. 23, 1752
(FIRST WARRANT)
ALEXANDER MURRY
143 ACRES & Allowance
SURVEY MAR. 23, 1752
ON WARRANT TO ACCEPT
DATED OCT. 29, 1765
(SECOND WARRANT)
MASTER

②-A
C — 168 — 69
82 ACRES — 72 PERCHES & Allowance
SURVEY (No Date Listed)
PATENT JAN. 19, 1853
To — Clement Brook et al.
H — 49 — 354

③
C — 87 — 24
HENRY HOLSTON
210 ACRES & Allowance
WARRANT OCT. 19, 1737
SURVEY OCT. 24, 1737
DIVIDED INTO (3) PARTS
MASTER

③-A
C — 116 — 266
77 ACRES — 22 PERCHES & Allowance
RESURVEY SEPT. 20, 1786
PATENT APR. 14, 1790
To — William Merwine
P — 16 — 259
" R o m e "

③-B
C — 87 — 289
79 ACRES & Allowance
SURVEY MAY 8, 1782
PATENT JAN. 21, 1783
To — Matthias Kaler
P — 1 — 449

③-C
C — 87 — 23
48 ACRES — 157 PERCHES & Allowance
RESURVEY FEB. 10, 1796
PATENT MAY 11, 1799
To — Peter Myers
P — 34 — 647
" M a x F i e l d "

A CONNECTED DRAFT. of seven (7) tracts of land, which when surveyed, were situate as follows: six (6) in Robeson Township, Lancaster (now Berks) County; and one (1) in Union Township, Berks County. The draft has been constructed from and compared with original drafts on file in the Division of Land Records, Bureau of Archives and History, Historical and Museum Commission, Commonwealth of Penna., under the direction of Edward D. Price, Chief.

IN TESTIMONY WHEREOF. I have hereunto set my hand and caused the seal of the said Commission to be affixed at Harrisburg, Pennsylvania, this twenty ninth day of June A. D., one thousand nine hundred and eighty four.



LARRY E. TISE, Executive Director
Historical and Museum Commission

By: Harry E. Whipkey
HARRY E. WHIPKEY, Director, Bureau of Archives and History