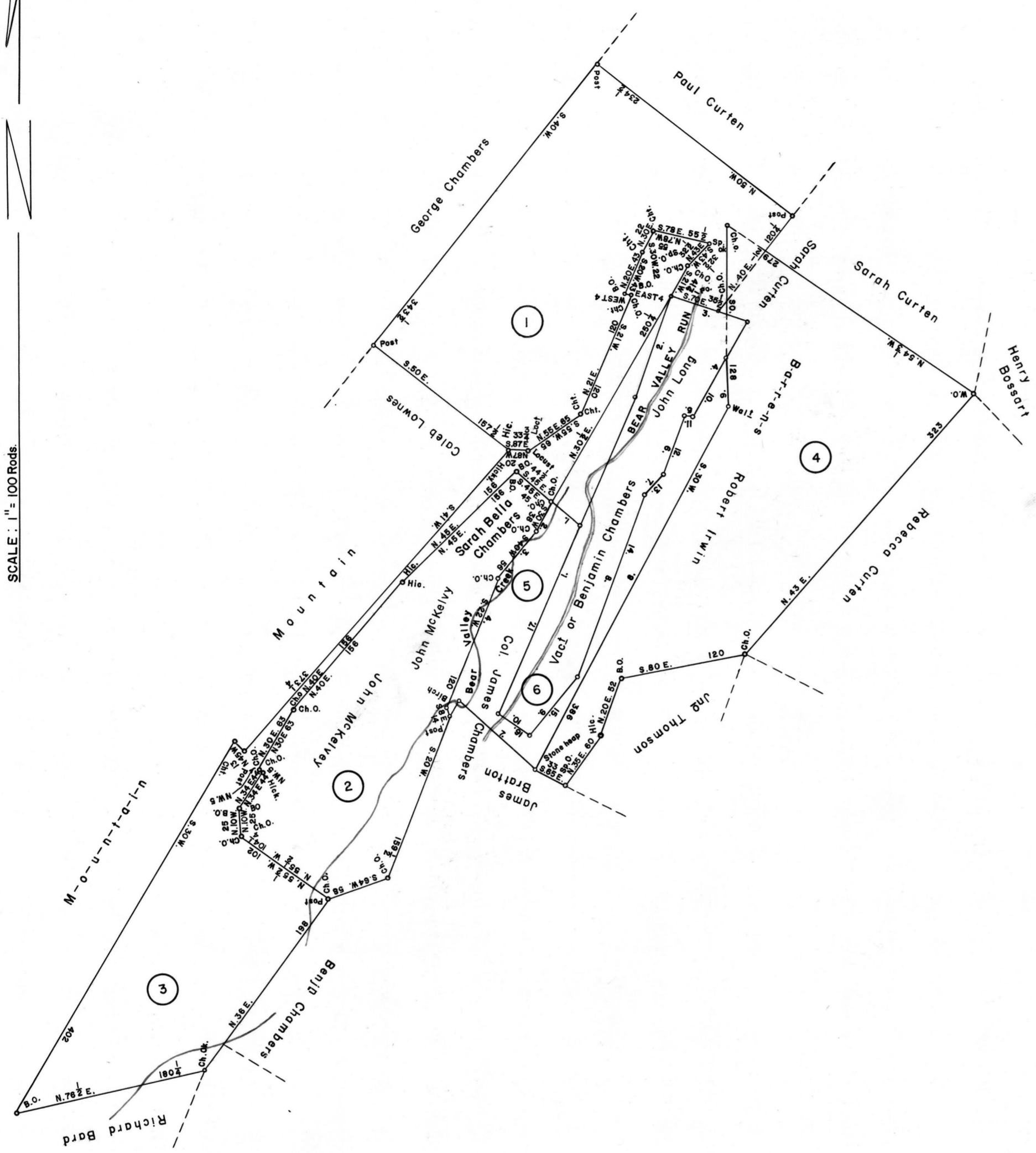


SCALE: 1" = 100 Rods



①
 C—163—195
JOHN MELSO
 392 Acres—68 Perches & Allow
 Warrant Mar. 30, 1793
 Survey June 9, 1794
 Patent Aug. 27, 1874
 To—George Chambers and Theodore McGowan
 H—73—3

②
 C—144—177
JOHN MCKELVY
 259 Acres—116 Perches & Allow
 Warrant Aug. 31, 1787
 Survey Dec. 13, 1787
 Patent Feb. 20, 1827
 To—Archibald Bard
 H—24—179

③
 C—77—206
SARAH BELLA CHAMBERS
 301 Acres—126 Perches & Allow
 Warrant Sept. 7, 1784
 Survey Dec. 13, 1787
 Patent Feb. 9, 1864
 To—John Beavers, dec. Heirs
 H—54—720

④
 C—84—277
ROBERT IRWIN
 406 Acres—141 Perches & Allow
 Warrant Mar. 30, 1793
 Survey June 9, 1794
 Patent Jan. 21, 1795
 To—John W. Godfrey
 P—23—143
 Called—"The Inn"

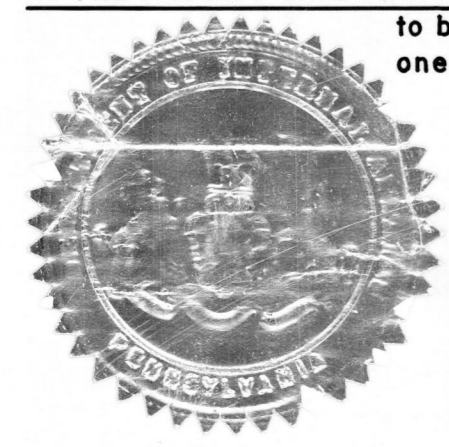
⑤
 B—13—215
HARRISON KALBACH
 109 Acres—4 Perches & Allow
 Warrant Mar. 21, 1905
 Survey May 9, 1905
 Patent Nov. 27, 1905
 To—Harrison Kalbach
 H—77—142

Courses and Distances
 (Beginning at Stones)
 1. N. 44 $\frac{1}{2}$ ° W. 36.6 to Stones
 2. S. 30 $\frac{1}{2}$ ° W. 43 to Stones
 3. S. 38 $\frac{1}{2}$ ° W. 54.6 to Stones
 4. S. 22 $\frac{1}{2}$ ° W. 124.1 to Stones
 5. S. 7 $\frac{1}{2}$ ° E. 9.7 to Stones
 6. N. 27 $\frac{1}{2}$ ° E. 21 $\frac{1}{2}$ to Stones
 7. S. 49 $\frac{1}{2}$ ° E. 97.5 to Stones
 8. N. 29 $\frac{1}{2}$ ° E. 384.5 to Stones
 9. N. $\frac{1}{2}$ ° E. 45 to Stones
 10. S. 32 $\frac{1}{2}$ ° W. 66.5 to Stones
 11. N. 84 $\frac{1}{2}$ ° W. 7 to Stones
 12. S. 22 $\frac{1}{2}$ ° W. 58 to Stones
 13. S. 42 $\frac{1}{2}$ ° W. 28 to Stones
 14. S. 22 $\frac{1}{2}$ ° W. 180 to Stones
 15. S. 42 $\frac{1}{2}$ ° W. 70 to Stones
 16. N. 51 $\frac{1}{2}$ ° W. 33.5 to Stones
 17. N. 25 $\frac{1}{2}$ ° E. 190 (to Begin.)

⑥
 B—21—89
JOHN LONG
 131 Acres—53 Perches & Allow
 Warrant June 10, 1839
 Survey Aug. 29, 1839
 (Unpatented at this date)
Courses and Distances
 (Beginning at mark)
 1. N. 28° E. 318 to Hickory
 2. N. 23° E. 103 to Stones
 3. S. 65 $\frac{1}{2}$ ° E. 77 to Stones
 4. S. 35° W. 101 to Pine
 5. N. 81 $\frac{1}{2}$ ° W. 7 to Pine
 6. S. 25° W. 58 to Pine
 7. S. 45° W. 28 to Pine
 8. S. 25° W. 180 to Chest. Stump
 9. S. 45° W. 70 to Rock
 10. N. 49° W. 33 (to Begin.)

A CONNECTED DRAFT of six (6) tracts of land which, when surveyed, were situate as follows: one (1) in Peters Township, Cumberland (now Franklin) County; two (2) in Peters Township, Franklin County; one (1) in Franklin County; and two (2) in St. Thomas Township, Franklin County. The warrants, surveys, and patents bearing, respectively, the dates as above set forth, are constructed from and have been compared with the original drafts on file in the Bureau of Land Records of the Department of Internal Affairs, Commonwealth of Pennsylvania, under the direction of A. G. Reese, Director.

IN TESTIMONY WHEREOF: I have hereunto set my hand and caused the seal of the said Department to be affixed at Harrisburg, Pennsylvania, this nineteenth day of December A.D., one thousand nine hundred and sixty-three.



GENEVIEVE BLATT
 Secretary of Internal Affairs

By: *William C. Seyler*
 WILLIAM C. SEYLER, Deputy Secretary.