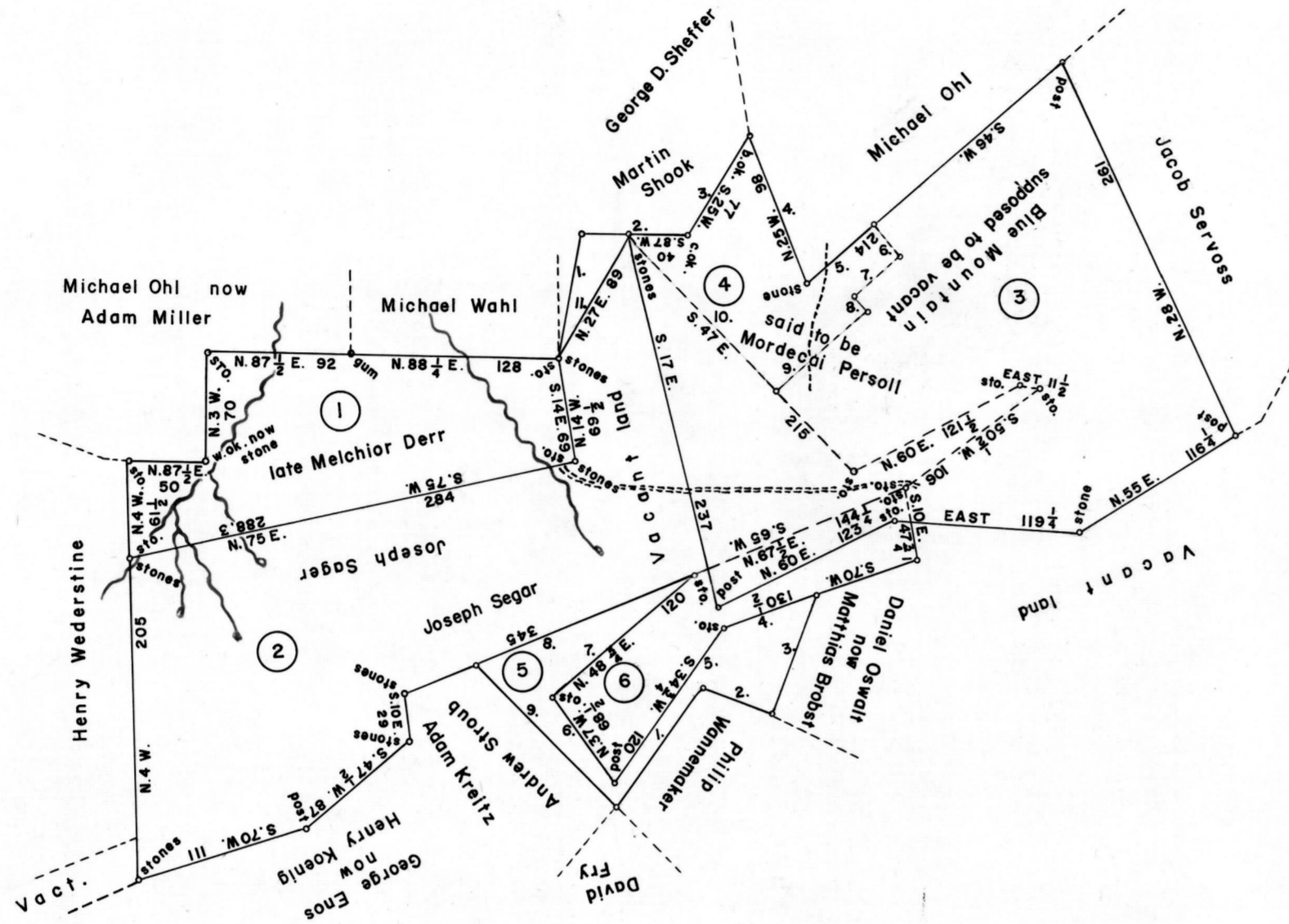


SCALE: 1" = 100 FEET



①  
C—62—77  
FERDINAND FOLLWEILER  
143 ACRES—60 PERCHES & AIL.  
WARRANT MAY 27, 1819  
SURVEY JUNE 7, 1819  
PATENT MAY 24, 1821  
To—FERDINAND FOLLWEILER  
H—18—155

②  
C—204—132  
JOSEPH SAEGER  
436 ACRES—20 PERCHES & AIL.  
WARRANT MAY 7, 1816  
SURVEY MAY 21, 1816  
PATENT JAN 24, 1817  
To—JOSEPH SAEGER  
H—18—1

③  
A—63—246  
WILLIAM WEST  
443 ACRES—126 PERCHES & AIL.  
WARRANT AUG. 13, 1793  
SURVEY SEPT. 5, 1793  
PATENT MAR 12, 1794  
To—Andrew Douglass  
P—20—323  
"Horace"

④  
D—32—190  
DAVID LONGEBERGER  
67 ACRES—75 PERCHES & AIL.  
WARRANT FEB. 26, 1827  
SURVEY OCT. 4, 1827  
(IS UNPATENTED AT THIS DATE)

⑤  
C—184—217  
LAWRENCE REITZ  
50 ACRES & Allowance  
WARRANT JAN. 4, 1810  
SURVEY MAY 15, 1810  
PATENT JAN 18, 1814  
To—LAWRENCE REITZ  
H—9—424

⑥  
C—184—218  
JOHN REITZ  
71 ACRES—145 PERCHES & AIL.  
WARRANT FEB. 20, 1813  
SURVEY OCT. 8, 1813  
PATENT JAN. 18, 1814  
To—JOHN REITZ  
H—9—426

COURSES and DISTANCES

④  
BEGINNING AT STO.  
1. N. 8 E. 77 TO STO.  
2. N. 88 E. 71.5 TO CHT.  
3. N. 28 E. 76 TO B.O.K.  
4. S. 24 E. 100 TO STO.  
5. N. 46 E. 56 TO CHT.  
6. S. 44 E. 25 TO CHT.  
7. S. 46 W. 40 TO S.O.  
8. S. 44 E. 11 TO CHT.  
9. S. 46 W. 76.5 TO STO.  
10. N. 47 W. 136 TO STO.  
11. S. 27 W. 89 TO BEGIN.

⑤  
BEGINNING AT STO.  
1. N. 34 1/4 E. 94 TO STO.  
2. S. 70 E. 48 TO STO.  
3. N. 20 E. 80 TO STO.  
4. S. 70 W. 62 TO POST  
5. S. 34 1/4 W. 120 TO POST  
6. N. 37 W. 68 1/2 TO POST  
7. N. 48 1/4 E. 120 TO POST  
8. S. 67 1/2 W. 152 TO STO.  
9. S. 45 E. 130 TO BEGIN.

A CONNECTED DRAFT of six (6) tracts of land which, when surveyed, were situate as follows: one (1) in Heidelberg and Penn Townships, Northampton County; two (2) in West Penn Township, Schuylkill County and three (3) in Lynn Township, Lehigh County. The draft has been constructed from and compared with the original drafts on file in the Bureau of Land Records, Department of Internal Affairs of the Commonwealth of Pennsylvania, under the direction of Anthony G. Reese, Director.

IN TESTIMONY WHEREOF: I have hereunto set my hand and caused the seal of the said Department to be affixed at Harrisburg, Pennsylvania this fourth day of January A.D., one thousand nine hundred and sixty-six.



GENEVIEVE BLATT  
Secretary of Internal Affairs.  
By: *William C. Seyler*  
WILLIAM C. SEYLER, Deputy Secretary

1572