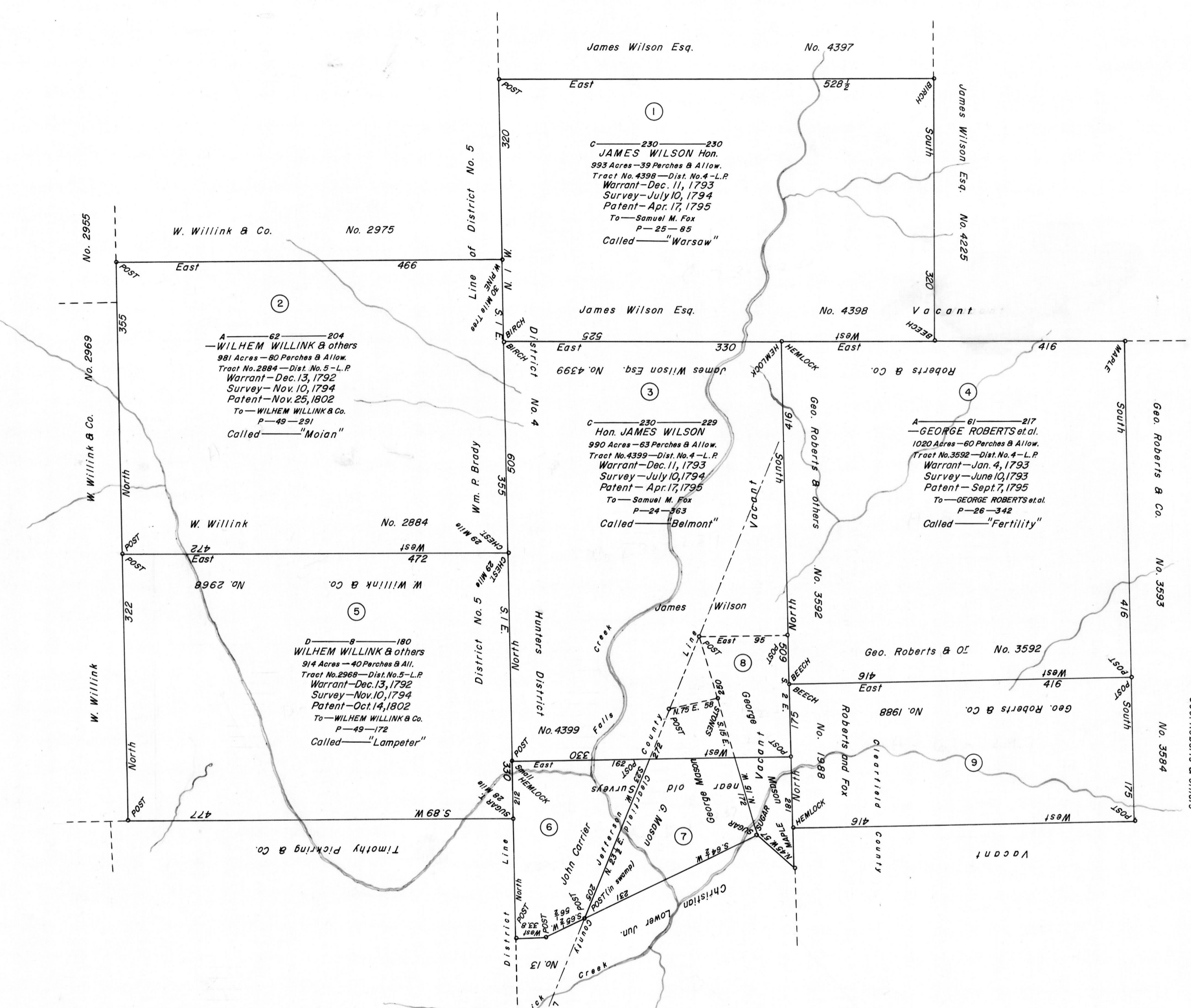


SCALE: 1" = 100 Rods.



⑥
 C—30—140
 JOHN CARRIER
 144.3 Acres & Allowance
 Warrant—Aug. 9, 1859
 Resurvey—July 21, 1874
 Bond of Property on Order dated
 April 16, 1874
 Patent—Jan. 18, 1875
 To—C.M. Garrison et al.
 H—73—159

⑦
 D—20—237
 GEORGE MASON
 150 Acres—154.5 Perches & All.
 Warrant—Mar. 9, 1859
 Survey—June 10, 1863
 (Unpatented at this date)

⑧
 D—20—238
 GEORGE MASON
 99 Acres—9.6 Perches & All.
 Warrant—Oct. 1, 1856
 Survey—Dec. 25 & 26, 1860
 (Unpatented at this date)

⑨
 A—61—297
 GEORGE ROBERTS et al.
 429 Acres—38 Perches & Allow.
 Tract No. 1988—Dist. No. 4—L.P.
 Warrant—Oct. 15, 1792
 Survey—June 11, 1793
 Patent—Sept. 4, 1795
 To—GEORGE ROBERTS & S.M. Fox
 P—17—393
 Called—"Hemlock Valley"

A CONNECTED DRAFT: Nine (9) tracts of land, six (6) of them situate on Sandy Lick Creek, four (4) in District No. 4 and two (2) in District 5, Last Purchase, now Northumberland County; two (2) situate in Brady Township, Clearfield County; and one (1) in Washington Township, Jefferson County. The draft has been constructed from and compared with the records on file in the Bureau of Land Records in the Department of Internal Affairs, Commonwealth of Pennsylvania, under the direction of A.G. Reese, Director.

IN TESTIMONY WHEREOF: I have hereunto set my hand and caused the seal of the said Department to be affixed at Harrisburg, Pennsylvania this fifteenth day of July A.D., one thousand nine hundred and sixty.



GENEVIEVE BLATT
 Secretary of Internal Affairs
 By—William C. Seyler
 WILLIAM C. SEYLER,
 Deputy Secretary.

1642