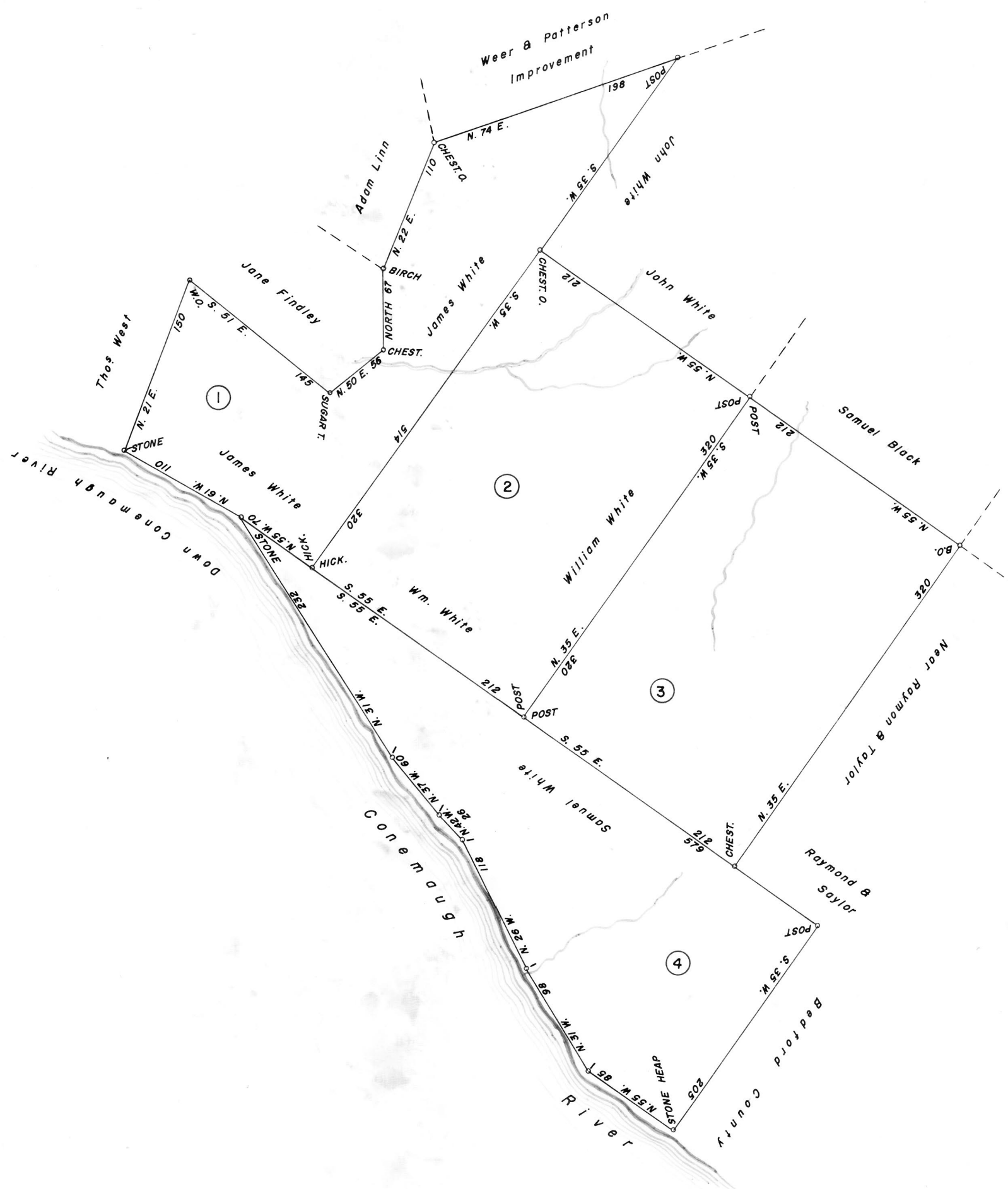


SCALE: 1" = 100 Rods



①

E—60
JAMES WHITE
 407 Acres & Allow.
 Warrant Jan. 15, 1794
 Survey Nov. 21, 1794
 Patent July 8, 1796
 To—William M. Biddle
 P—29—225
 Called—"HOPEWELL"

②

E—59
WILLIAM WHITE
 400 Acres & Allowance
 Warrant Jan. 15, 1794
 Survey Nov. 21, 1794
 Patent July 8, 1796
 To—William M. Biddle
 P—29—223
 Called—"SPRINGFIELD"

③

G—486
ANDREW WHITE
 400 Acres & Allowance
 Warrant Jan. 15, 1794
 Survey Nov. 21, 1794
 Patent July 8, 1796
 To—William M. Biddle
 P—29—216
 Called—"WHITEFIELD"

④

E—58
SAMUEL WHITE
 401 Acres & Allowance
 Warrant Jan. 15, 1794
 Survey Nov. 21, 1794
 Patent July 8, 1796
 To—William M. Biddle
 P—29—224
 Called—"HEMPFIELD"

A CONNECTED DRAFT: Four (4) tracts of land situate, when surveyed, in Wheatfield Township, Westmoreland County. The draft has been constructed from and compared with the records in the Bureau of Land Records in the Department of Internal Affairs, Commonwealth of Pennsylvania, under the direction of A. G. Reese, Director.

IN TESTIMONY WHEREOF: I have hereunto set my hand and caused the seal of the said Department to be affixed at Harrisburg, Pennsylvania this fourth day of January A. D., one thousand nine hundred and sixty-one.



GENEVIEVE BLATT
 Secretary of Internal Affairs.

By: *William C. Seyler*
 WILLIAM C. SEYLER, Deputy Secretary