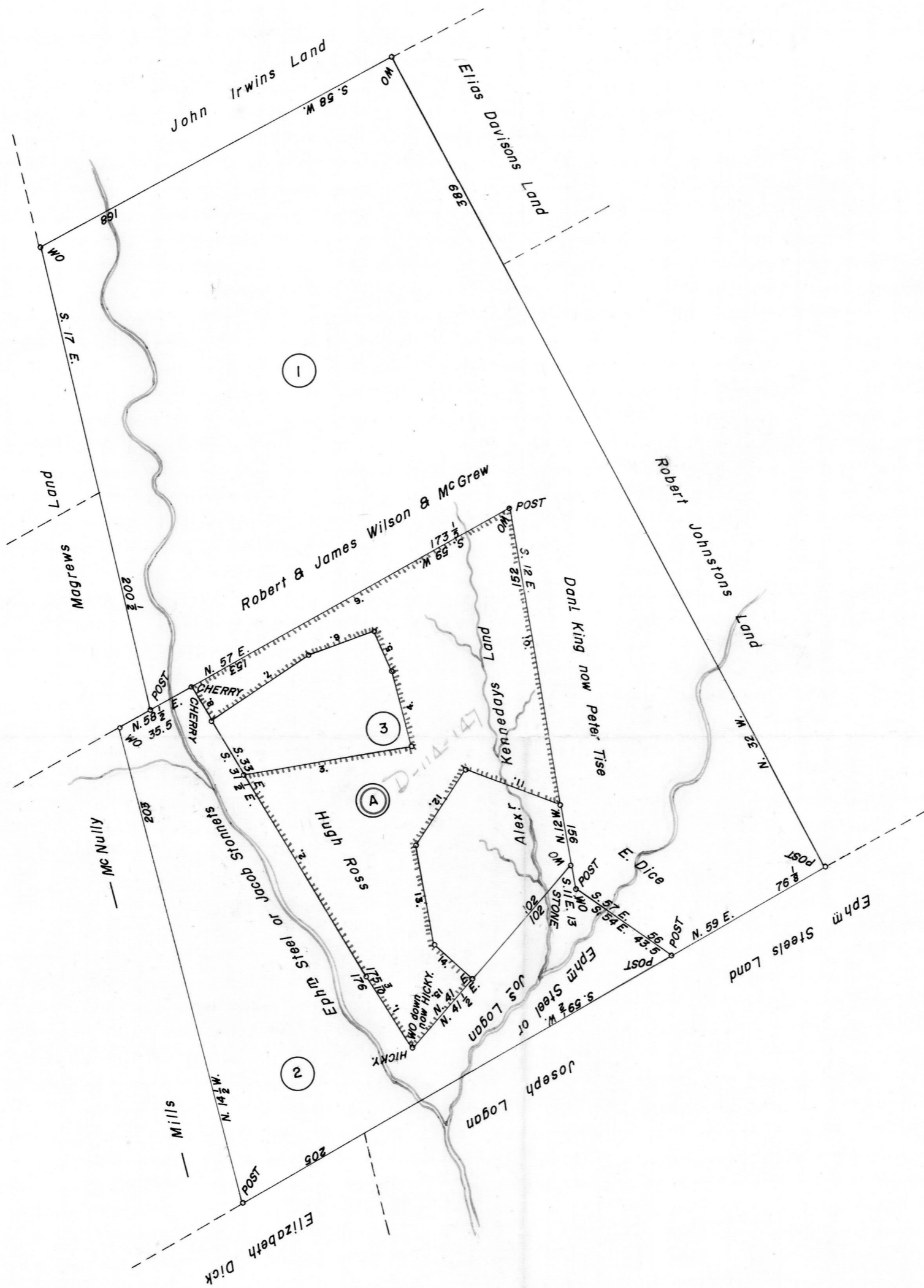


SCALE: 1" = 50 Rods.



①
 C—104—41
DANIEL KING
 309 Acres & Allowance
 Warrant Apr. 13, 1774
 Survey Mar. 15, 1790
 Patent July 31, 1790
 To—William Watts
 P—16—353
 Called—"KINGSTON"

②
 C—218—58
JACOB STAMATS
 96 Acres—136 Perches & Allowance
 Warrant Nov. 13, 1851
 Survey Dec. 3, 1851
 Patent May 25, 1852
 To—JACOB STAMATS
 H—50—34

③
 A—14—113
JAMES KING
 115 Acres—71¹/₂ Perches & Allowance
 Warrant Mar. 11, 1793
 Survey Feb. 12, 1822
 (Unpatented at this date)

Ⓐ
 COURSES & DISTANCES
 (Beginning)
 1. N. 30° 32' W. 36.601 P.
 2. N. 27° 35' 20" W. 98.577 P.
 3. N. 83° 43' 30" E. 71.496 P.
 4. N. 11° 14' W. 33.344 P.
 5. N. 20° 04' W. 18.179 P.
 6. S. 73° 50' 30" W. 28.605 P.
 7. S. 59° 17' W. 50.414 P.
 8. N. 27° 35' 20" W. 16.464 P.
 9. N. 64° 04' 30" E. 153.884 P.
 10. S. 6° 12' 40" E. 126.716 P.
 11. N. 66° 01' 20" W. 41.990 P.
 12. S. 36° 38' W. 37.632 P.
 13. S. 6° 57' E. 43.294 P.
 14. S. 45° 43' 50" E. 20.998 P.
 15. S. 44° 16' 10" W. 38.977 P.

A CONNECTED DRAFT: Three (3) tracts of land situate, when surveyed, one (1) on Turtle Creek, Franklin Township, Westmoreland County; one (1) in Plum Township, Allegheny County; and one (1) in Plum Township, Westmoreland County. The draft has been constructed from and compared with the records on file in the Bureau of Land Records in the Department of Internal Affairs, Commonwealth of Pennsylvania, under the direction of Anthony G. Reese, Director.

IN TESTIMONY WHEREOF: I have hereunto set my hand and caused the seal of the said Department to be affixed at Harrisburg, Pennsylvania this twelfth day of January A.D., one thousand nine hundred and sixty-one.



GENEVIEVE BLATT
 Secretary of Internal Affairs

By: *William C. Seyler*
 WILLIAM C. SEYLER, Deputy Secretary.