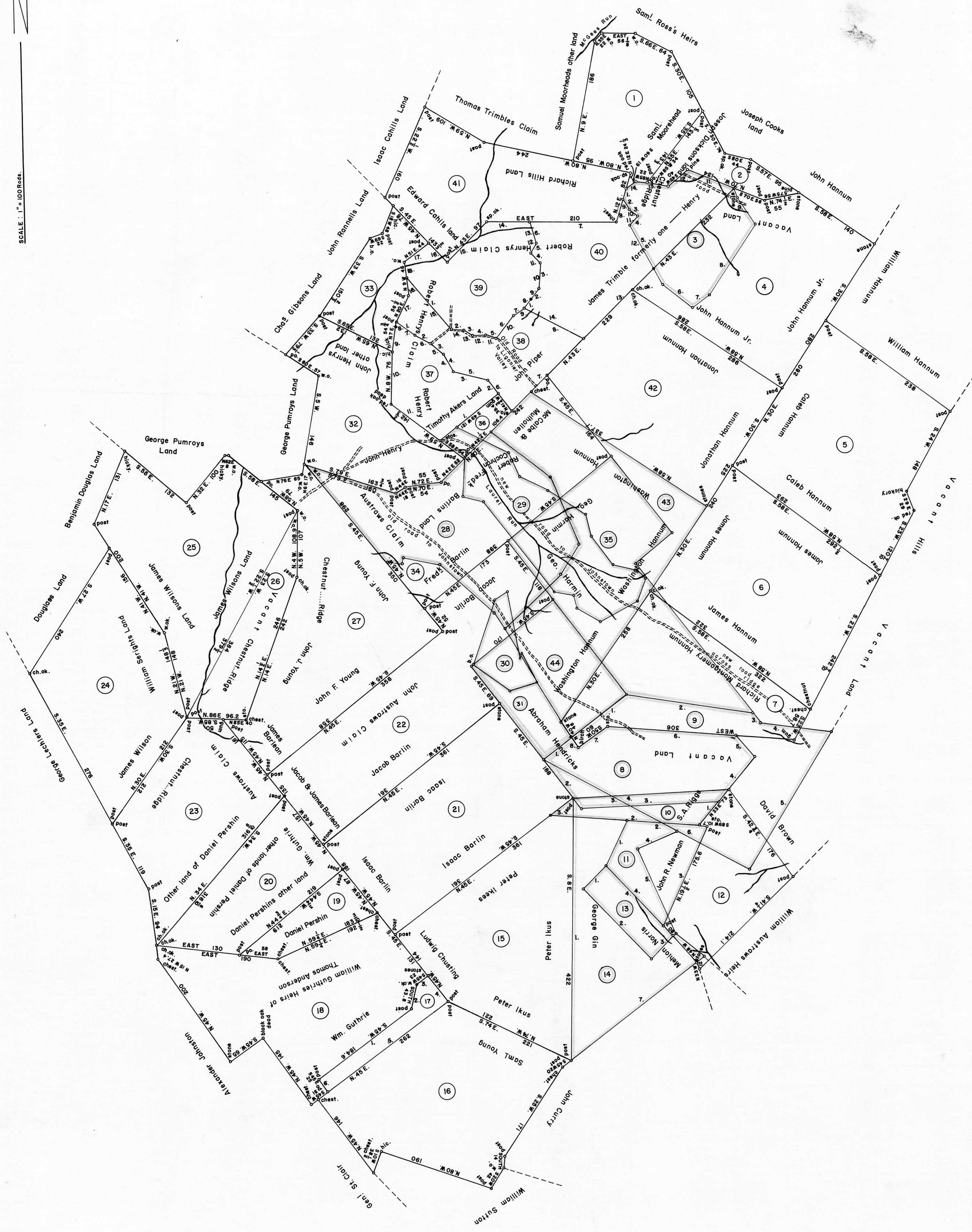


SCALE: 1" = 400 FEET.



A CONNECTED DRAFT of forty-four (44) tracts of land in Westmoreland County, which, when surveyed, were situate as follows: two (2) in Derry and Ligonier Townships; five (5) in Fairfield Township; six (6) in Ligonier Township and thirty-one (31) in Derry Township. The draft has been constructed from and compared with the original drafts on file in the Bureau of Land Records, Department of Internal Affairs, Commonwealth of Pennsylvania under the direction of Anthony G. Reese, Director.

IN TESTIMONY WHEREOF: I have hereunto set my hand and caused the seal of the said Department to be affixed at Harrisburg, Pennsylvania this third day of August A.D., one thousand nine hundred and sixty-six.



GENEVIEVE BLATT  
Secretary of Internal Affairs

By: *William C. Seyler*  
WILLIAM C. SEYLER, Deputy Secretary.

- Beginning of stones
  1. S. 15° 15' 00" E. 115.0 to stone
  2. S. 15° 15' 00" E. 115.0 to stone
  3. S. 15° 15' 00" E. 115.0 to stone
  4. S. 15° 15' 00" E. 115.0 to stone
  5. S. 15° 15' 00" E. 115.0 to stone
  6. S. 15° 15' 00" E. 115.0 to stone
  7. N. 48° 00' 00" E. to ch. ok.
  8. N. 30° 00' 00" E. to red oak
  9. N. 40° 00' 00" E. to birch
  10. N. 20° 00' 00" E. to ch. ok.
  11. N. 70° 00' 00" E. to stone
  12. S. 45° 00' 00" E. to stone
  13. N. 64° 00' 00" E. to post
  14. S. 55° 00' 00" E. to post
- Beginning of stone
  1. S. 41° 56' 00" to stone
  2. S. 44° 00' 00" to stone
  3. N. 80° 00' 00" to post
  4. N. 33° 00' 00" to history
  5. N. 45° 00' 00" to stone
  6. N. 80° 00' 00" to stone
  7. S. 51° 00' 00" to birch
  8. N. 40° 00' 00" to post
- Beginning of chest oak
  1. N. 40° 00' 00" to post
  2. S. 45° 00' 00" to post
  3. S. 45° 00' 00" to history
  4. EAST 100 to post
  5. S. 23° 00' 00" to post
  6. N. 70° 00' 00" to post
- Beginning of stone
  1. S. 34° 00' 00" to stone
  2. N. 89° 00' 00" to stone
  3. S. 47° 00' 00" to stone
  4. N. 83° 00' 00" to post
- Beginning of chestnut
  1. S. 22° 00' 00" to stone
  2. N. 89° 00' 00" to stone
  3. S. 15° 00' 00" to stone
  4. N. 48° 00' 00" to post
- Beginning of post
  1. N. 40° 00' 00" to post
  2. S. 15° 00' 00" to ch. ok.
  3. S. 70° 00' 00" to post
  4. S. 60° 00' 00" to ch. ok.
  5. S. 32° 00' 00" to post
  6. S. 62° 00' 00" to ch. ok.
  7. S. 45° 00' 00" to post
- Beginning of post
  1. N. 50° 00' 00" to stone
  2. NORTH 48° 00' 00" to post
  3. N. 50° 00' 00" to stone
  4. S. 48° 00' 00" to stone
  5. S. 50° 00' 00" to stone
  6. N. 40° 00' 00" to post
- Beginning of post
  1. S. 78° 00' 00" to stone
  2. N. 40° 00' 00" to stone
  3. N. 71° 00' 00" to post
  4. N. 42° 00' 00" to ch. ok.
  5. S. 92° 00' 00" to ch. ok.
  6. S. 30° 00' 00" to ch. ok.
  7. S. 20° 00' 00" to ch. ok.
  8. S. 41° 00' 00" to stone
  9. N. 38° 00' 00" to ch. ok.
  10. N. 64° 00' 00" to stone
  11. N. 85° 00' 00" to ch. ok.
  12. S. 2° 00' 00" to post
  13. S. 85° 00' 00" to post
  14. N. 44° 00' 00" to post
- Beginning of mark
  1. N. 49° 00' 00" to post
  2. S. 67° 00' 00" to stone
  3. S. 31° 00' 00" to post
  4. S. 68° 00' 00" to post
  5. S. 39° 00' 00" to post
  6. S. 63° 00' 00" to post
  7. S. 17° 00' 00" to post
  8. S. 41° 00' 00" to post
  9. S. 85° 00' 00" to post
  10. S. 54° 00' 00" to post
  11. S. 18° 00' 00" to post
  12. N. 80° 00' 00" to post
  13. N. 21° 00' 00" to post
  14. N. 85° 00' 00" to post
  15. N. 79° 00' 00" to post
  16. N. 34° 00' 00" to post
  17. N. 58° 00' 00" to post
  18. N. 58° 00' 00" to post
  19. S. 58° 00' 00" to post
- Beginning of ch. ok.
  1. N. 54° 00' 00" to post
  2. S. 23½° 00' 00" to ch. ok.
  3. N. 9° 00' 00" to stone
  4. S. 41° 00' 00" to stone
  5. S. 55° 00' 00" to ch. ok.
  6. N. 62° 00' 00" to stone
  7. N. 6° 00' 00" to post
- Beginning of stones
  1. S. 3° 00' 00" to stone
  2. S. 61° 00' 00" to stone
  3. N. 65° 00' 00" to stone
  4. S. 41° 00' 00" to stone
  5. S. 41° 00' 00" to stone
  6. N. 44° 00' 00" to post
- Beginning of post
  1. N. 45° 00' 00" to post
  2. S. 45° 00' 00" to post
  3. S. 45° 00' 00" to post
  4. S. 45° 00' 00" to post
  5. WEST 206½ to post
  6. N. 45° 00' 00" to post
- Beginning of chestnut
  1. N. 40° 00' 00" to post
  2. N. 89° 00' 00" to stone
  3. N. 77° 00' 00" to rock
  4. N. 38½° 00' 00" to rock
  5. N. 48° 00' 00" to post
  6. N. 40° 00' 00" to post
  7. N. 07° 00' 00" to history
  8. S. 21° 00' 00" to post
  9. S. 80° 00' 00" to history
  10. S. 7° 00' 00" to red oak
  11. S. 58° 00' 00" to post
- Beginning of hickory
  1. S. 58° 00' 00" to stone
  2. S. 65° 00' 00" to stone
  3. S. 48° 00' 00" to stone
  4. S. 37° 00' 00" to rock
  5. S. 77° 00' 00" to stone
  6. S. 41° 00' 00" to stone
  7. N. 43° 00' 00" to stone
  8. N. 85° 00' 00" to stone
  9. S. 64° 00' 00" to stone
  10. S. 35° 00' 00" to stone
  11. N. 17° 00' 00" to stone
  12. WEST 80 to post
  13. N. 66° 00' 00" to post
  14. WEST 18 to stone
  15. N. 47° 00' 00" to post
  16. S. 42° 00' 00" to stone
  17. S. 21° 00' 00" to post
- Beginning of w. oak
  1. N. 36° 00' 00" to history
  2. N. 30° 00' 00" E. 237 to w. oak
  3. N. 8½° 00' 00" to ch. ok.
  4. N. 32° 00' 00" E. 22 to ch. ok.
  5. N. 26° 00' 00" E. 187 to post
  6. N. 32° 00' 00" E. 58 to post
  7. S. 68° 00' 00" E. 140 to post
  8. N. 14° 00' 00" E. 38 to post
  9. S. 37° 00' 00" E. 22 to deposit
  10. S. 80° 00' 00" E. 16.5 to ch. ok.
  11. S. 22° 00' 00" E. 21.7 to ch. ok.
  12. S. 32° 00' 00" E. 72.19 to post
  13. S. 44° 00' 00" E. 155 to stone
  14. N. 62° 00' 00" E. 104 to post
- Beginning of stone
  1. N. 40° 00' 00" to ch. ok.
  2. N. 40° 00' 00" E. 169 to ch. ok.
  3. N. 58° 00' 00" E. 50 to ch. ok.
  4. N. 31° 00' 00" W. 105 to ch. ok.
  5. N. 58° 00' 00" W. 137 to ch. ok.
  6. N. 45° 00' 00" E. 92 to stone
  7. S. 58° 00' 00" E. 330 to post
  8. S. 30° 00' 00" W. 347 to post
- Beginning of chest. ok.
  1. NORTHWEST 200 to post
  2. NORTHWEST 170 to ch. ok.
  3. SOUTHWEST 200 to post
  4. SOUTHWEST 170 to post
- Beginning of post
  1. N. 40° 00' 00" to post
  2. S. 15° 00' 00" to ch. ok.
  3. S. 70° 00' 00" to post
  4. S. 60° 00' 00" to ch. ok.
  5. S. 32° 00' 00" to post
  6. S. 62° 00' 00" to ch. ok.
  7. S. 45° 00' 00" to post
- Beginning of post
  1. N. 50° 00' 00" to stone
  2. NORTH 48° 00' 00" to post
  3. N. 50° 00' 00" to stone
  4. S. 48° 00' 00" to stone
  5. S. 50° 00' 00" to stone
  6. N. 40° 00' 00" to post
- Beginning of mark
  1. N. 49° 00' 00" to post
  2. S. 67° 00' 00" to stone
  3. S. 31° 00' 00" to post
  4. S. 68° 00' 00" to post
  5. S. 39° 00' 00" to post
  6. S. 63° 00' 00" to post
  7. S. 17° 00' 00" to post
  8. S. 41° 00' 00" to post
  9. S. 85° 00' 00" to post
  10. S. 54° 00' 00" to post
  11. S. 18° 00' 00" to post
  12. N. 80° 00' 00" to post
  13. N. 21° 00' 00" to post
  14. N. 85° 00' 00" to post
  15. N. 79° 00' 00" to post
  16. N. 34° 00' 00" to post
  17. N. 58° 00' 00" to post
  18. N. 58° 00' 00" to post
  19. S. 58° 00' 00" to post
- Beginning of ch. ok.
  1. N. 54° 00' 00" to post
  2. S. 23½° 00' 00" to ch. ok.
  3. N. 9° 00' 00" to stone
  4. S. 41° 00' 00" to stone
  5. S. 55° 00' 00" to ch. ok.
  6. N. 62° 00' 00" to stone
  7. N. 6° 00' 00" to post
- Beginning of stones
  1. S. 3° 00' 00" to stone
  2. S. 61° 00' 00" to stone
  3. N. 65° 00' 00" to stone
  4. S. 41° 00' 00" to stone
  5. S. 41° 00' 00" to stone
  6. N. 44° 00' 00" to post
- Beginning of post
  1. N. 45° 00' 00" to post
  2. S. 45° 00' 00" to post
  3. S. 45° 00' 00" to post
  4. S. 45° 00' 00" to post
  5. WEST 206½ to post
  6. N. 45° 00' 00" to post
- Beginning of chestnut
  1. N. 40° 00' 00" to post
  2. N. 89° 00' 00" to stone
  3. N. 77° 00' 00" to rock
  4. N. 38½° 00' 00" to rock
  5. N. 48° 00' 00" to post
  6. N. 40° 00' 00" to post
  7. N. 07° 00' 00" to history
  8. S. 21° 00' 00" to post
  9. S. 80° 00' 00" to history
  10. S. 7° 00' 00" to red oak
  11. S. 58° 00' 00" to post
- Beginning of hickory
  1. S. 58° 00' 00" to stone
  2. S. 65° 00' 00" to stone
  3. S. 48° 00' 00" to stone
  4. S. 37° 00' 00" to rock
  5. S. 77° 00' 00" to stone
  6. S. 41° 00' 00" to stone
  7. N. 43° 00' 00" to stone
  8. N. 85° 00' 00" to stone
  9. S. 64° 00' 00" to stone
  10. S. 35° 00' 00" to stone
  11. N. 17° 00' 00" to stone
  12. WEST 80 to post
  13. N. 66° 00' 00" to post
  14. WEST 18 to stone
  15. N. 47° 00' 00" to post
  16. S. 42° 00' 00" to stone
  17. S. 21° 00' 00" to post
- Beginning of w. oak
  1. N. 36° 00' 00" to history
  2. N. 30° 00' 00" E. 237 to w. oak
  3. N. 8½° 00' 00" to ch. ok.
  4. N. 32° 00' 00" E. 22 to ch. ok.
  5. N. 26° 00' 00" E. 187 to post
  6. N. 32° 00' 00" E. 58 to post
  7. S. 68° 00' 00" E. 140 to post
  8. N. 14° 00' 00" E. 38 to post
  9. S. 37° 00' 00" E. 22 to deposit
  10. S. 80° 00' 00" E. 16.5 to ch. ok.
  11. S. 22° 00' 00" E. 21.7 to ch. ok.
  12. S. 32° 00' 00" E. 72.19 to post
  13. S. 44° 00' 00" E. 155 to stone
  14. N. 62° 00' 00" E. 104 to post
- Beginning of stone
  1. N. 40° 00' 00" to ch. ok.
  2. N. 40° 00' 00" E. 169 to ch. ok.
  3. N. 58° 00' 00" E. 50 to ch. ok.
  4. N. 31° 00' 00" W. 105 to ch. ok.
  5. N. 58° 00' 00" W. 137 to ch. ok.
  6. N. 45° 00' 00" E. 92 to stone
  7. S. 58° 00' 00" E. 330 to post
  8. S. 30° 00' 00" W. 347 to post
- Beginning of chest. ok.
  1. NORTHWEST 200 to post
  2. NORTHWEST 170 to ch. ok.
  3. SOUTHWEST 200 to post
  4. SOUTHWEST 170 to post
- Beginning of post
  1. N. 40° 00' 00" to post
  2. S. 15° 00' 00" to ch. ok.
  3. S. 70° 00' 00" to post
  4. S. 60° 00' 00" to ch. ok.
  5. S. 32° 00' 00" to post
  6. S. 62° 00' 00" to ch. ok.
  7. S. 45° 00' 00" to post
- Beginning of post
  1. N. 50° 00' 00" to stone
  2. NORTH 48° 00' 00" to post
  3. N. 50° 00' 00" to stone
  4. S. 48° 00' 00" to stone
  5. S. 50° 00' 00" to stone
  6. N. 40° 00' 00" to post
- Beginning of mark
  1. N. 49° 00' 00" to post
  2. S. 67° 00' 00" to stone
  3. S. 31° 00' 00" to post
  4. S. 68° 00' 00" to post
  5. S. 39° 00' 00" to post
  6. S. 63° 00' 00" to post
  7. S. 17° 00' 00" to post
  8. S. 41° 00' 00" to post
  9. S. 85° 00' 00" to post
  10. S. 54° 00' 00" to post
  11. S. 18° 00' 00" to post
  12. N. 80° 00' 00" to post
  13. N. 21° 00' 00" to post
  14. N. 85° 00' 00" to post
  15. N. 79° 00' 00" to post
  16. N. 34° 00' 00" to post
  17. N. 58° 00' 00" to post
  18. N. 58° 00' 00" to post
  19. S. 58° 00' 00" to post
- Beginning of ch. ok.
  1. N. 54° 00' 00" to post
  2. S. 23½° 00' 00" to ch. ok.
  3. N. 9° 00' 00" to stone
  4. S. 41° 00' 00" to stone
  5. S. 55° 00' 00" to ch. ok.
  6. N. 62° 00' 00" to stone
  7. N. 6° 00' 00" to post
- Beginning of stones
  1. S. 3° 00' 00" to stone
  2. S. 61° 00' 00" to stone
  3. N. 65° 00' 00" to stone
  4. S. 41° 00' 00" to stone
  5. S. 41° 00' 00" to stone
  6. N. 44° 00' 00" to post
- Beginning of post
  1. N. 45° 00' 00" to post
  2. S. 45° 00' 00" to post
  3. S. 45° 00' 00" to post
  4. S. 45° 00' 00" to post
  5. WEST 206½ to post
  6. N. 45° 00' 00" to post
- Beginning of chestnut
  1. N. 40° 00' 00" to post
  2. N. 89° 00' 00" to stone
  3. N. 77° 00' 00" to rock
  4. N. 38½° 00' 00" to rock
  5. N. 48° 00' 00" to post
  6. N. 40° 00' 00" to post
  7. N. 07° 00' 00" to history
  8. S. 21° 00' 00" to post
  9. S. 80° 00' 00" to history
  10. S. 7° 00' 00" to red oak
  11. S. 58° 00' 00" to post
- Beginning of hickory
  1. S. 58° 00' 00" to stone
  2. S. 65° 00' 00" to stone
  3. S. 48° 00' 00" to stone
  4. S. 37° 00' 00" to rock
  5. S. 77° 00' 00" to stone
  6. S. 41° 00' 00" to stone
  7. N. 43° 00' 00" to stone
  8. N. 85° 00' 00" to stone
  9. S. 64° 00' 00" to stone
  10. S. 35° 00' 00" to stone
  11. N. 17° 00' 00" to stone
  12. WEST 80 to post
  13. N. 66° 00' 00" to post
  14. WEST 18 to stone
  15. N. 47° 00' 00" to post
  16. S. 42° 00' 00" to stone
  17. S. 21° 00' 00" to post
- Beginning of w. oak
  1. N. 36° 00' 00" to history
  2. N. 30° 00' 00" E. 237 to w. oak
  3. N. 8½° 00' 00" to ch. ok.
  4. N. 32° 00' 00" E. 22 to ch. ok.
  5. N. 26° 00' 00" E. 187 to post
  6. N. 32° 00' 00" E. 58 to post
  7. S. 68° 00' 00" E. 140 to post
  8. N. 14° 00' 00" E. 38 to post
  9. S. 37° 00' 00" E. 22 to deposit
  10. S. 80° 00' 00" E. 16.5 to ch. ok.
  11. S. 22° 00' 00" E. 21.7 to ch. ok.
  12. S. 32° 00' 00" E. 72.19 to post
  13. S. 44° 00' 00" E. 155 to stone
  14. N. 62° 00' 00" E. 104 to post
- Beginning of stone
  1. N. 40° 00' 00" to ch. ok.
  2. N. 40° 00' 00" E. 169 to ch. ok.
  3. N. 58° 00' 00" E. 50 to ch. ok.
  4. N. 31° 00' 00" W. 105 to ch. ok.
  5. N. 58° 00' 00" W. 137 to ch. ok.
  6. N. 45° 00' 00" E. 92 to stone
  7. S. 58° 00' 00" E. 330 to post
  8. S. 30° 00' 00" W. 347 to post
- Beginning of chest. ok.
  1. NORTHWEST 200 to post
  2. NORTHWEST 170 to ch. ok.
  3. SOUTHWEST 200 to post
  4. SOUTHWEST 170 to post
- Beginning of post
  1. N. 40° 00' 00" to post
  2. S. 15° 00' 00" to ch. ok.
  3. S. 70° 00' 00" to post
  4. S. 60° 00' 00" to ch. ok.
  5. S. 32° 00' 00" to post
  6. S. 62° 00' 00" to ch. ok.
  7. S. 45° 00' 00" to post
- Beginning of post
  1. N. 50° 00' 00" to stone
  2. NORTH 48° 00' 00" to post
  3. N. 50° 00' 00" to stone
  4. S. 48° 00' 00" to stone
  5. S. 50° 00' 00" to stone
  6. N. 40° 00' 00" to post
- Beginning of mark
  1. N. 49° 00' 00" to post
  2. S. 67° 00' 00" to stone
  3. S. 31° 00' 00" to post
  4. S. 68° 00' 00" to post
  5. S. 39° 00' 00" to post
  6. S. 63° 00' 00" to post
  7. S. 17° 00' 00" to post
  8. S. 41° 00' 00" to post
  9. S. 85° 00' 00" to post
  10. S. 54° 00' 00" to post
  11. S. 18° 00' 00" to post
  12. N. 80° 00' 00" to post
  13. N. 21° 00' 00" to post
  14. N. 85° 00' 00" to post
  15. N. 79° 00' 00" to post
  16. N. 34° 00' 00" to post
  17. N. 58° 00' 00" to post
  18. N. 58° 00' 00" to post
  19. S. 58° 00' 00" to post
- Beginning of ch. ok.
  1. N. 54° 00' 00" to post
  2. S. 23½° 00' 00" to ch. ok.
  3. N. 9° 00' 00" to stone
  4. S. 41° 00' 00" to stone
  5. S. 55° 00' 00" to ch. ok.
  6. N. 62° 00' 00" to stone
  7. N. 6° 00' 00" to post
- Beginning of stones
  1. S. 3° 00' 00" to stone
  2. S. 61° 00' 00" to stone
  3. N. 65° 00' 00" to stone
  4. S. 41° 00' 00" to stone
  5. S. 41° 00' 00" to stone
  6. N. 44° 00' 00" to post
- Beginning of post
  1. N. 45° 00' 00" to post
  2. S. 45° 00' 00" to post
  3. S. 45° 00' 00" to post
  4. S. 45° 00' 00" to post
  5. WEST 206½ to post
  6. N. 45° 00' 00" to post
- Beginning of chestnut
  1. N. 40° 00' 00" to post
  2. N. 89° 00' 00" to stone
  3. N. 77° 0