

Scale: 1" = 60 Rods

①

C 54 149
 WILLIAM GUIER
 411 ACRES—120 PERCHES & Allow
 WARRANT JUN. 13, 1793
 SURVEY SEPT. 19, 1793
 PATENT OCT. 9, 1794
 To—Cadwalder Evans
 P—23—96
 " Cole's Hill "

②

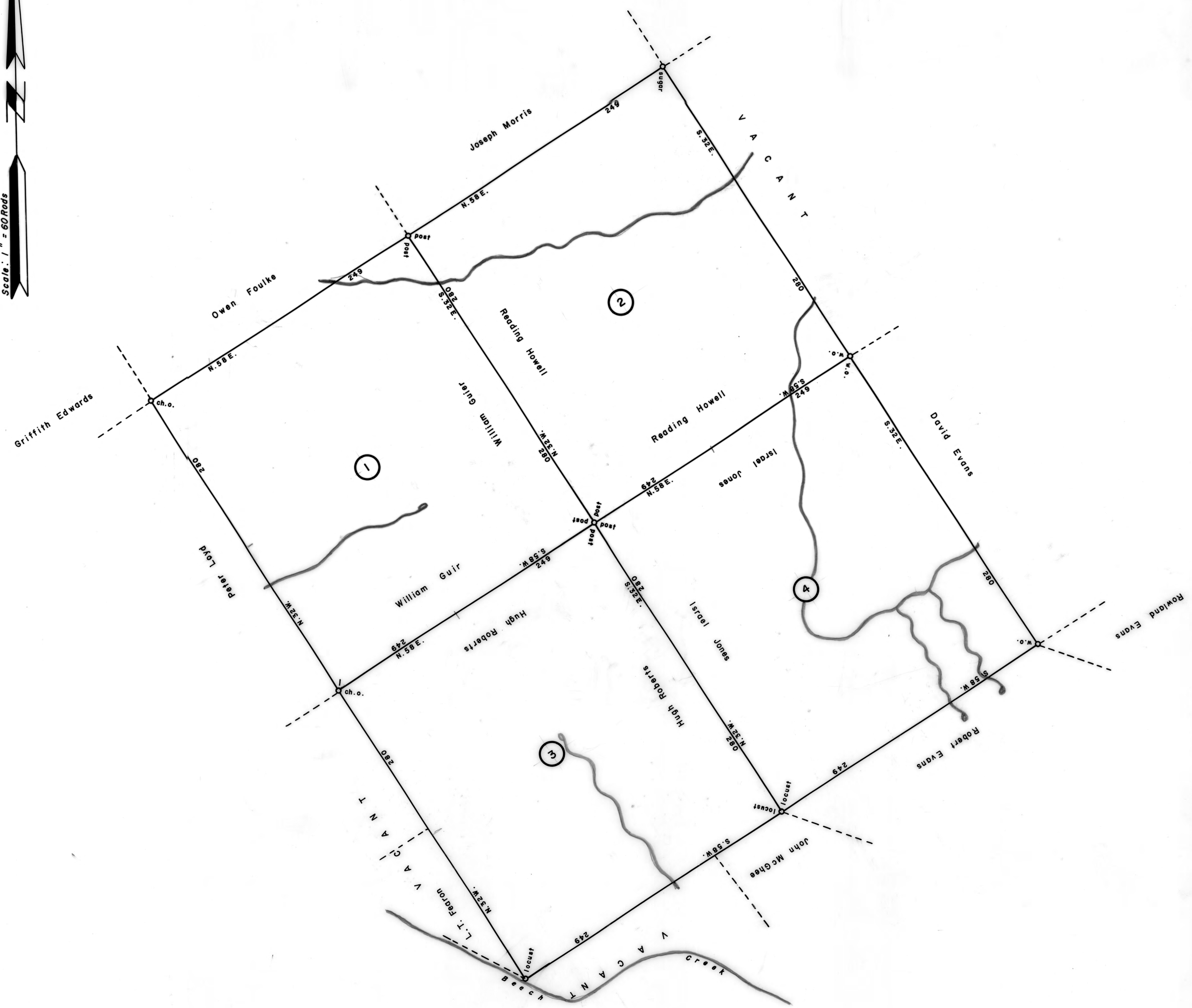
C 93 144
 READING HOWELL
 411 ACRES—120 PERCHES & Allow
 WARRANT JUN. (obl.), 1793
 SURVEY SEPT. 19, 1793
 PATENT OCT. 8, 1794
 To—Cadwalder Evans
 P—22—367
 " Richland "

③

C 188 167
 HUGH ROBERTS
 411 ACRES—120 PERCHES & Allow
 WARRANT JUN. 13, 1793
 SURVEY SEPT. 19, 1793
 PATENT OCT. 9, 1794
 To—Cadwalder Evans
 P—23—99
 " Hope "

④

C 109 113
 ISRAEL JONES
 411 ACRES—120 PERCHES & Allow
 WARRANT JUN. 13, 1793
 SURVEY SEPT. 19, 1793
 PATENT OCT. 9, 1794
 To—Cadwalder Evans
 P—24—101
 " Dublin "



A CONNECTED DRAFT: of four (4) tracts of land, which when surveyed, were situate in Bald Eagle Township, Northumberland (now Clinton) County. The draft has been constructed from and compared with original drafts on file in the Bureau of Land Records, Department of Community Affairs, Commonwealth of Pennsylvania, under the direction of Edward D. Price, Director.

IN TESTIMONY WHEREOF: I have hereunto set my hand and caused the seal of the said Department to be affixed at Harrisburg, Pennsylvania, this tenth day of June A.D., one thousand nine hundred and eighty.



SHIRLEY M. DENNIS
 Secretary of Community Affairs

By: Shirley M. Dennis
 SHIRLEY M. DENNIS, Secretary of Community Affairs