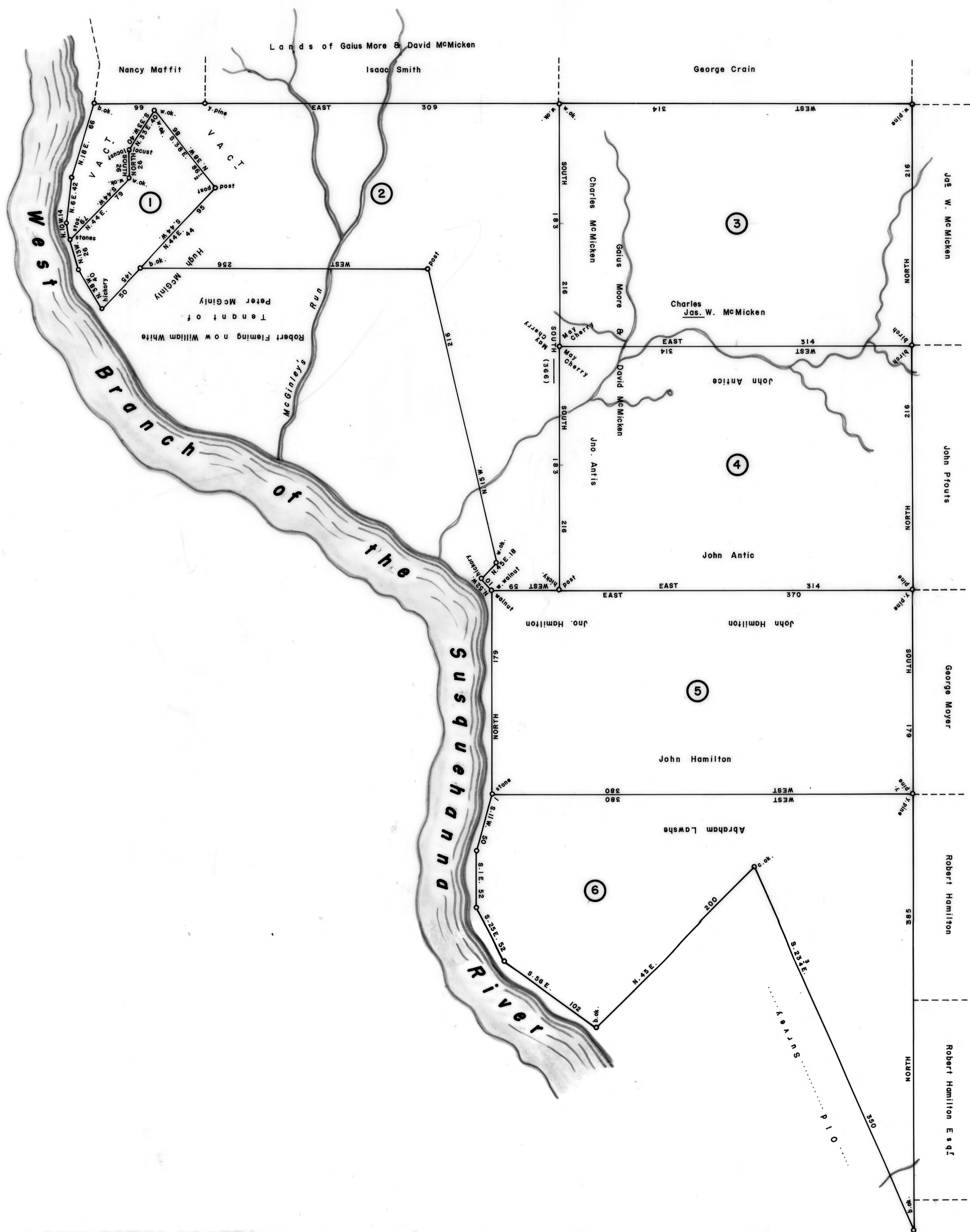


Scale: 1" = 60 Rods



①
D—4—253
JOHN VINCENT
55 ACRES—134 PERCHES & Allow
Last Purchase—1784
TRACT NO. 5507
WARRANT APR. 12, 1794
SURVEY SEPT. 19, 1794
PATENT JUN. 16, 1870
To—Elizabeth Beidler (late Elizabeth Grugan)
H—55—388

②
C—136—239
ROBERT MAFFIT (Maffet)
405 ACRES—105 PERCHES & Allow
WARRANT APR. 12, 1830
SURVEY JUN. 9, 1833
PATENT AUG. 16, 1833
To—John A. Gamble et. al.
H—52—435

③
A—20—273
CHARLES McMICKEN
400 ACRES & Allowance
WARRANT MAR. 3, 1830
SURVEY JUN. 25, 1830
PATENT DEC. 14, 1855
To—John A. Gamble et. al.
H—52—425

④
A—79—283
JOHN ANTICE (Antis)
400 ACRES & Allowance
WARRANT MAR. 3, 1830
SURVEY (S. J.), 1830
PATENT DEC. 17, 1855
To—John A. Gamble et. al.
H—52—427

⑤
C—99—27
JOHN HAMILTON
400 ACRES & Allowance
WARRANT MAR. 3, 1830
SURVEY JUN. 18, 1830
PATENT JAN. 30, 1856
To—Philip M. Price
H—52—509

⑥
C—113—297
ABRAHAM LAWSHE
402 ACRES & Allowance
WARRANT MAR. 3, 1830
SURVEY JUN. 17, 1830
PATENT JAN. 30, 1856
To—Philip M. Price
H—52—510

A CONNECTED DRAFT: of six (6) tracts of land, which when surveyed, were situate as follows: two (2) in Chapman Township, Lycoming County; and four (4) in Dunstable Township, Lycoming County, (now all in Grugan Township, Clinton County). The draft has been constructed from and compared with original drafts on file in the Bureau of Land Records, Department of Community Affairs, Commonwealth of Pennsylvania, under the direction of Edward D. Price, Director.

IN TESTIMONY WHEREOF: I have hereunto set my hand and caused the seal of the said Department to be affixed at Harrisburg, Pennsylvania, this twenty-fourth day of February A. D., one thousand nine hundred and eighty one.



SHIRLEY M. DENNIS
Secretary of Community Affairs

By: *William A. Hawkins*
WILLIAM A. HAWKINS, Executive Deputy Secretary