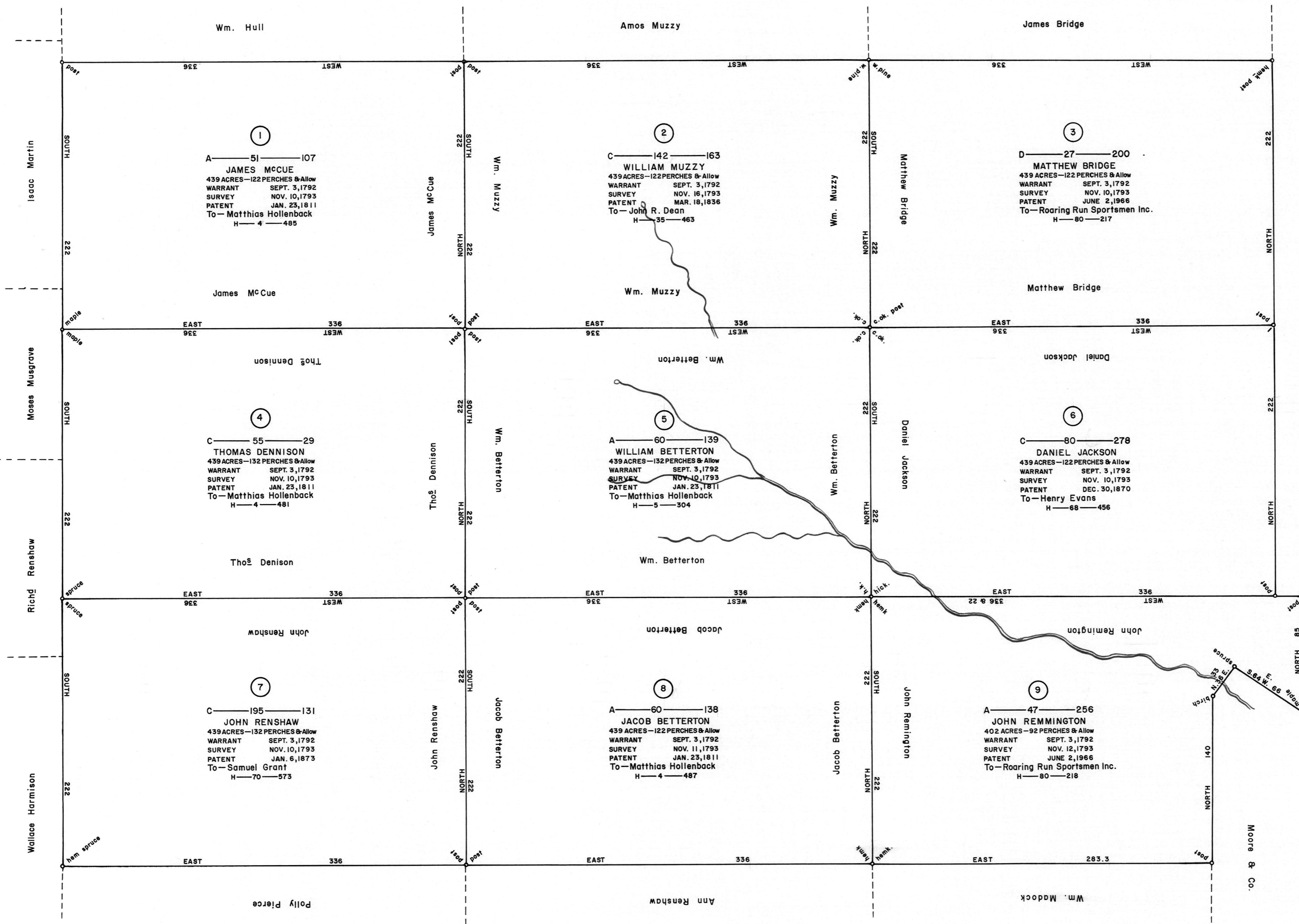


SCALE: 1" = 60 Rods



A CONNECTED DRAFT of nine (9) tracts of land which, when surveyed, were situate as follows: five (5) on the North Branch of Bowmans Creek in Eaton (now Monroe) Township, Luzerne (now Wyoming) County; and four (4) between Bowmans and Mehoopany Creeks, Luzerne (now Wyoming) County. The draft has been constructed from and compared with the original drafts on file in the Bureau of Land Records, of the Department of Community Affairs, Commonwealth of Pennsylvania, under the direction of Edward D. Price, Acting Director.

IN TESTIMONY WHEREOF: I have hereunto set my hand and caused the seal of the said Department to be affixed at Harrisburg, Pennsylvania, this thirteenth day, August A.D., one thousand nine hundred and seventy.

JOSEPH W. BARR, JR.
Secretary of Community Affairs

By: *Daniel Rogers*
DANIEL ROGERS, Deputy Secretary.

1747