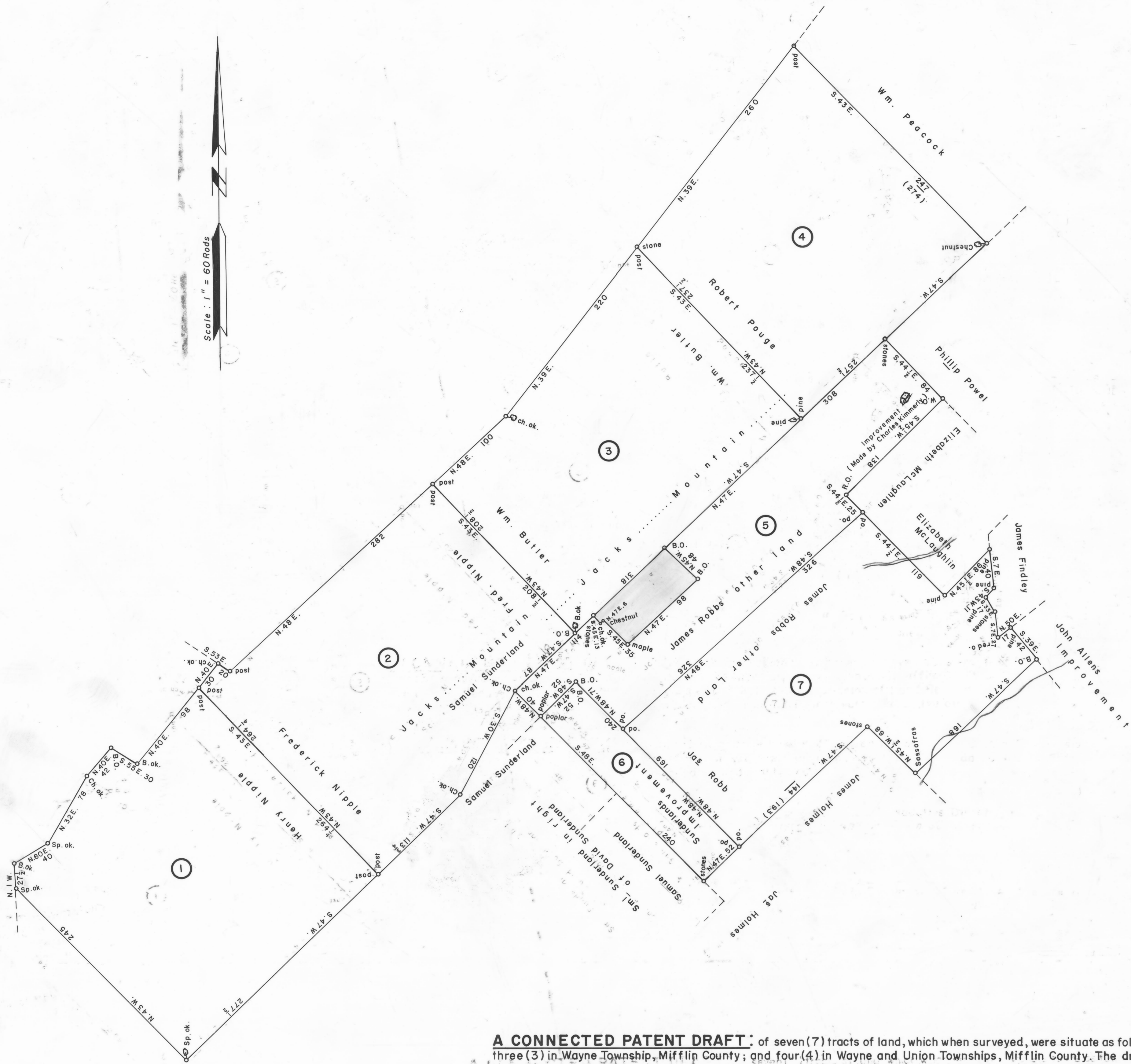


Scale: 1" = 60 Rods



①  
B—509  
HENRY NIPPLE  
430<sup>1</sup>/<sub>2</sub> Acres & Allow.  
WAR. MAR. 12, 1794  
SUR. DEC. 12, 1794  
PAT. JUN. 18, 1796  
To—Standish Ford et al.  
P—29—128  
"Dumbarton"

②  
Z—158  
FREDERICK NIPPLE  
430<sup>1</sup>/<sub>2</sub> Acres & Allow.  
WAR. MAR. 12, 1794  
SUR. DEC. 12, 1794  
PAT. JUN. 18, 1796  
To—Standish Ford et al.  
P—29—125  
"Ballshannon"

③  
A—29—16  
WILLIAM BUTLER  
407<sup>1</sup>/<sub>2</sub> Acres & Allow.  
WAR. MAR. 12, 1794  
SUR. DEC. 12, 1794  
PAT. JUN. 18, 1796  
To—Standish Ford et al.  
P—29—131  
"Partnership"

④  
C—160—145  
ROBERT POUGE  
388 Acres & Allow.  
WAR. MAR. 12, 1794  
SUR. DEC. 12, 1794  
PAT. JUN. 16, 1796  
To—Standish Ford et al.  
P—29—126  
"Pleasant Valley"

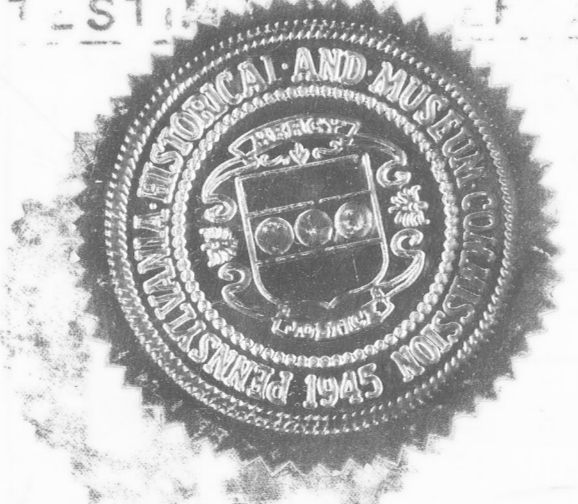
⑤  
C—198—32  
JAMES ROBB  
300 As.—73 Ps. & Allow.  
WAR. JAN. 9, 1837  
SUR. MAY 25, 1837  
PAT. NOV. 1, 1864  
To—JAMES ROBB  
H—57—224

⑥  
D—26—257  
SAMUEL SUNDERLAND  
73 As.—99 Ps. & Allow.  
WAR. JUN. 18, 1838  
SUR. JUN. 29, 1838  
(UNPATENTED AT THIS DATE)

⑦  
C—211—117  
JAMES ROBB  
400 Acres—5 Pers. & Allow.  
WAR. JAN. 2, 1837  
SUR. MAY 24, 1837  
PAT. JAN. 19, 1843  
To—JAMES ROBB  
H—44—331

**A CONNECTED PATENT DRAFT:** of seven (7) tracts of land, which when surveyed, were situate as follows: three (3) in Wayne Township, Mifflin County; and four (4) in Wayne and Union Townships, Mifflin County. The draft has been constructed from and compared with original drafts on file in the Division of Land Records, Bureau of Archives and History, Historical And Museum Commission, Commonwealth of Pennsylvania, under the direction of Donna Bingham Mungér, Chief.

**IN TESTIMONY WHEREOF:** I have hereunto set my hand and caused the seal of the said Commission to be affixed at Harrisburg, Pennsylvania, this thirteenth day of May A.D., one thousand nine hundred and eighty seven.



LARRY E. TISE, Executive Director  
Historical And Museum Commission

By: *Harry E. Whipkey*  
HARRY E. WHIPKEY, Director, Bureau of Archives and History