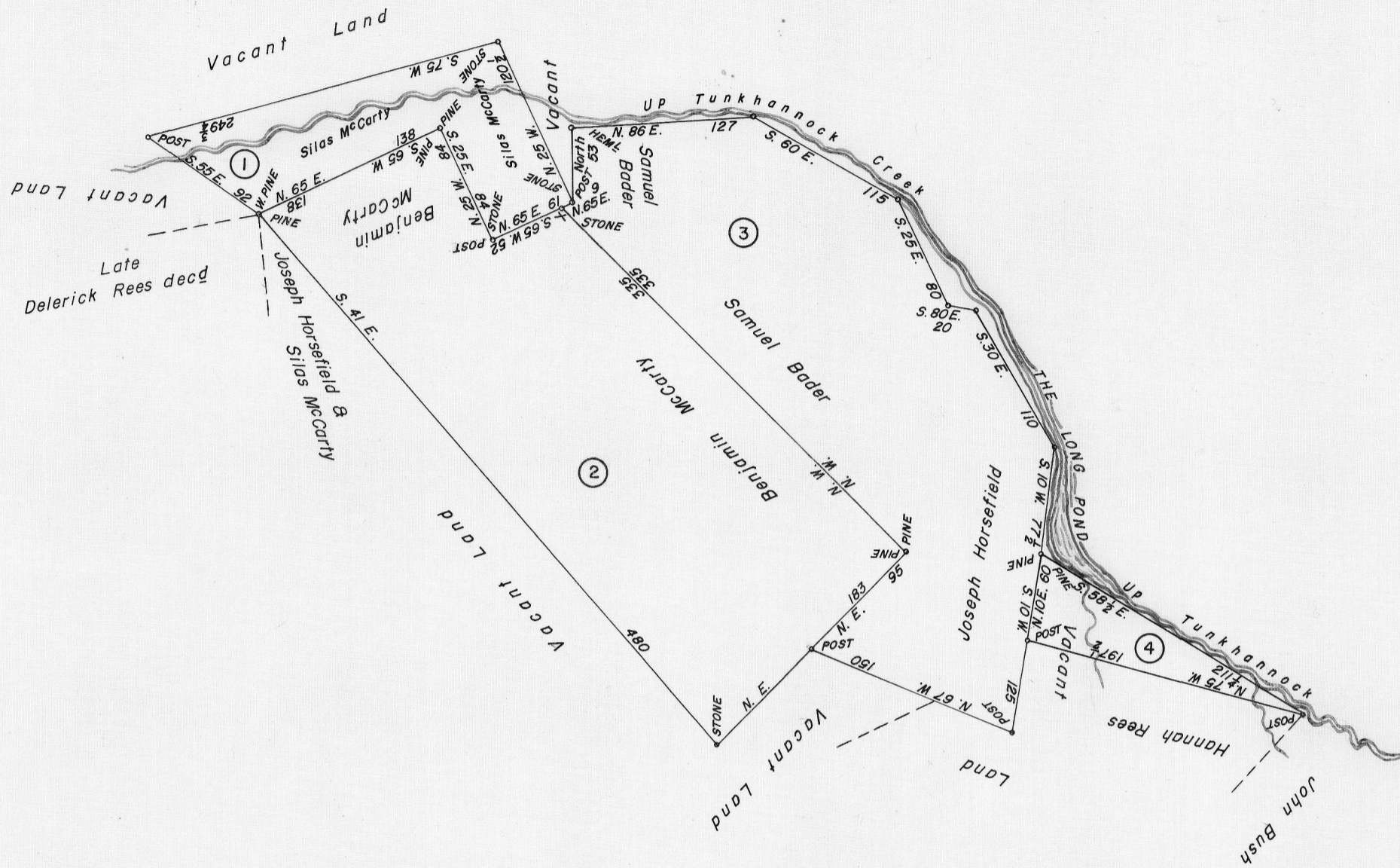


SCALE: 1" = 100 Rods



①  
A—88—257  
SYLAS McCARTY  
103 Acres—40 Perches & Allow.  
Warrant—June 4, 1785  
Survey—Aug. 25, 1785  
Patent—Oct. 4, 1790  
To—Joseph Horsefield  
P—16—426  
Called—"Hopewell"

②  
A—87—217  
BENJAMIN McCARTY  
427 Acres—40 Perches & All.  
Warrant—Oct. 21, 1785  
Survey—Aug. 25, 1786  
Patent—Jan. 30, 1788  
To—BENJAMIN McCARTY  
P—12—113  
Called—"McCarty's Fancy"

③  
A—28—81  
SAMUEL BADER  
400 Acres—120 Perches & All.  
Warrant—Oct. 21, 1785  
Survey—Aug. 26, 1786  
Patent—Jan. 30, 1788  
To—Joseph Horsefield  
P—12—114  
Called—"Badersburg"

④  
A—64—38  
HUGH HOLMES  
36 Acres & Allowance  
Warrant—Jan. 10, 1794  
Survey—May 4, 1796  
Patent—Nov. 25, 1796  
To—Edward Mott  
P—33—124  
Called—"Mount Joy"

**A CONNECTED DRAFT:** Four (4) tracts of land situate on Tunkhannock Creek near Great Pine Swamp (Long Pond) in Northampton County. The draft has been constructed from and compared with the records on file in the Bureau of Land Records in the Department of Internal Affairs, Commonwealth of Pennsylvania, under the direction of A. G. Reese, Director.

**IN TESTIMONY WHEREOF:** I have hereunto set my hand and caused the seal of the said Department to be affixed at Harrisburg, Pennsylvania this eighteenth day of August A.D., one thousand nine hundred and sixty.



GENEVIEVE BLATT  
Secretary of Internal Affairs

By: *William C. Seyler*  
WILLIAM C. SEYLER, Deputy Secretary.

1623