

1  
C — 10 — 151  
JAMES BROWN  
105 ACRES—119 Perches & Allowance  
WARRANT — SEPT. 7, 1784  
SURVEY — MAY 29, 1805  
PATENT — FEB. 15, 1811  
To — THOMAS SPENCER  
H — 5 — 378

2  
A — 63 — 278  
ANDREW D. HARRIS  
197 ACRES—78 Perches & Allowance  
WARRANT — JAN. 22, 1830  
SURVEY — MARCH 23, 1830  
PATENT — MAY 31, 1870  
To — JOHN H. McELWAIN et. al.  
H — 66 — 559

3  
D — 20 — 87  
SIMON YARGER  
59 ACRES—89 Perches & Allowance  
WARRANT — JAN. 17, 1866  
SURVEY — MAY 30, 1873  
PATENT — JUNE 27, 1873  
To — MUEL BROWN  
H — 71 — 784

4  
D — 20 — 86  
SIMON YARGER  
61 ACRES—118 Perches & Allowance  
WARRANT — JAN. 17, 1866  
SURVEY — MAY 30, 1873  
PATENT — JUNE 27, 1873  
To — SAMUEL BROWN  
H — 71 — 783

5  
C — 123 — 110  
WILLIAM LUSK  
114 ACRES—115 Perches & Allowance  
WARRANT — DEC. 4, 1793  
SURVEY — MARCH 2, 1804  
PATENT — DEC. 23, 1811  
To — SAMUEL WEAKLY & THOMAS CAMPBELL (Exr. in Trust)  
H — 6 — 458

6  
D — 15 — 260  
JOHN CORNMAN  
42 ACRES—66 Perches & Allowance  
WARRANT — JUNE 28, 1876  
SURVEY — OCT. 18, 1876  
UNPATENTED AT THIS DATE

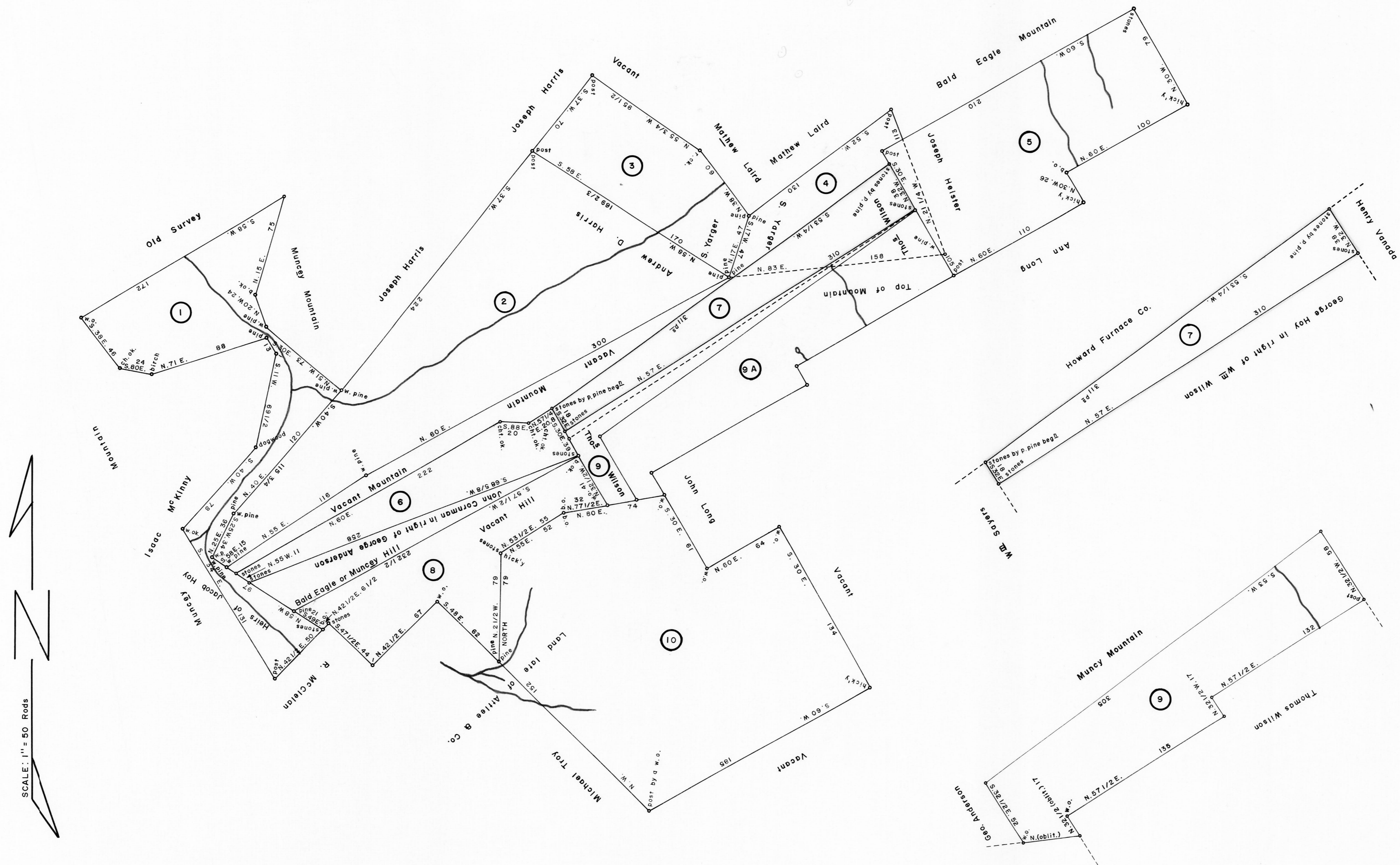
7  
D — 15 — 195  
W.D. ALLISON, Jr.  
49 ACRES—159 Perches & Allowance  
WARRANT — DEC. 26, 1863  
SURVEY — MAY 24, 1864  
UNPATENTED AT THIS DATE

8  
C — 5 — 170  
GEORGE ANDERSON  
63 ACRES—40 Perches & Allowance  
WARRANT — MAY 16, 1794  
SURVEY — DEC. 6, 1802  
PATENT — FEB. 15, 1811  
To — THOMAS SPENCER  
H — 5 — 380

9  
U — 128 — 128  
WILLIAM WILSON  
103 ACRES—40 Perches & Allowance  
WARRANT — DEC. 28, 1801  
SURVEY — DEC. 6, 1802  
NOT PATENTED AS A WHOLE  
TRACT (SEE D-9-63 BELOW & DRAWING 9 & 9A AT FAR RIGHT)

9A  
D — 9 — 63  
WILLIAM WILSON  
82 ACRES—63 Perches & Allowance  
WARRANT — DEC. 28, 1801  
SURVEY — DEC. 6, 1802  
(DIVIDED NOVEMBER 29, 1821)  
PATENT — FEB. 7, 1822  
To — WILLIAM SMYTH  
H — 18 — 473

10  
C — 198 — 225  
MARGARET DOUGHERTY  
227 ACRES & Allowance  
APPL. NO. 3910 (NEW PURCHASE)  
APPL. DATE — AUG. 31, 1769  
WARRANT (Accept) — JUNE 1, 1769  
SURVEY — OCT. 31, 1770  
PATENT — JULY 1, 1796  
To — THOMAS STEWARDSON  
P — 29 — 214  
"Hill Grove"



SCALE: 1" = 50 Rods

A CONNECTED DRAFT: of eleven (11) tracts of land which when surveyed, were situate as follows: three (3) in Centre Township, Centre County; two (2) in Howard and Marion Townships, Centre County; three (3) in Marion Township, Centre County; one (1) in Walker Township, Mifflin County (now Centre County); one (1) in Walker Township, Centre County; one (1) on a branch of Fishing Creek, Cumberland and Lycoming Counties (now Centre County). The draft has been constructed from and compared with the original drafts on file in the Bureau of Land Records, Department of Community Affairs, Commonwealth of Pennsylvania, under the direction of Edward D. Price, Director.

IN TESTIMONY WHEREOF: I have hereunto set my hand and caused the seal of the said Department to be affixed at Harrisburg, Pennsylvania, this thirteenth day of January A.D., one thousand nine hundred and seventy two.



WILLIAM H. WILCOX  
Secretary of Community Affairs  
By: *A. L. Hydemann Jr.*  
A. L. HYDEMAN JR., Deputy Secretary

