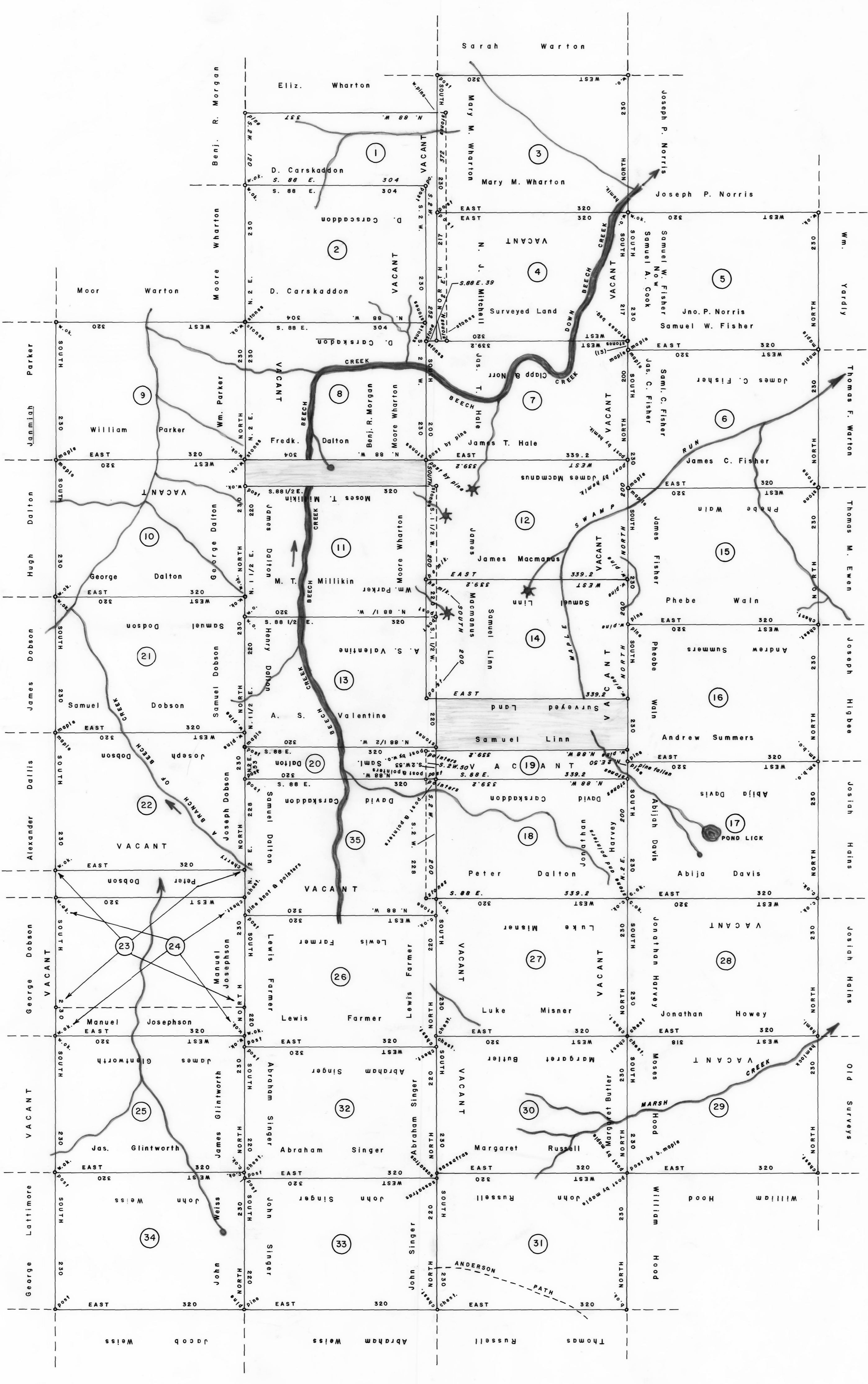


SCALE: 1" = 100 RODS



- 1 A—59—110 DAVID CARSKADDEN 287 ACRES—80 PERCHES & AIL. WARRANT—NOV. 5, 1858 SURVEY—NOV. 20, 1858 PATENT—APRIL 12, 1873 TO—CHARLES A. WATSON AND CHARLES CORRS (in Trust) H—71—663
- 2 A—59—108 DAVID CARSKADDEN 412 ACRES—44 PERCHES & AIL. WARRANT—DEC. 18, 1855 SURVEY—JUNE 22, 1858 PATENT—APRIL 12, 1873 TO—CHARLES A. WATSON AND CHARLES CORRS (in Trust) H—71—662
- 3 G—282 MARY M. WARTON 433 ACRES—163 PERCHES & AIL. WARRANT—APRIL 27, 1793 SURVEY—AUG. 25, 1794 PATENT—JAN. 26, 1799 TO—WILLIAM PARKER, ET AL. H—35—225 "Emsworth"
- 4 A—28—263 N. J. MITCHELL 409 ACRES—75 PERCHES & AIL. WARRANT—NOV. 11, 1853 SURVEY—NOV. 22, 1853 PATENT—APRIL 25, 1824 TO—KATO COAL COMPANY H—79—10
- 5 G—281 SAMUEL W. FISHER 433 ACRES—163 PERCHES & AIL. WARRANT—APRIL 27, 1793 SURVEY—AUG. 26, 1794 PATENT—JAN. 26, 1799 TO—WILLIAM PARKER & MOORE WHARTON H—34—422 "Sligo"
- 6 G—392 JAMES C. FISHER 433 ACRES—163 PERCHES & AIL. WARRANT—APRIL 27, 1793 SURVEY—AUG. 25, 1794 PATENT—JAN. 26, 1799 TO—WILLIAM PARKER, ET AL. H—34—435 "The Grove"
- 7 A—28—264 JAMES T. HALE 400 ACRES & Allowance WARRANT—MAY 29, 1850 SURVEY—JUNE 14, 1850 PATENT—APRIL 25, 1824 TO—KATO COAL COMPANY H—79—9
- 8 A—59—109 DAVID CARSKADDEN 412 ACRES—44 PERCHES & AIL. WARRANT—JUNE 16, 1856 SURVEY—AUG. 22, 1858 PATENT—APRIL 12, 1873 TO—CHARLES A. WATSON AND CHARLES CORRS (in Trust) H—71—661
- 9 G—294 WILLIAM PARKER 433 ACRES—163 PERCHES & AIL. WARRANT—APRIL 27, 1793 SURVEY—AUGUST 21, 1794 PATENT—JAN. 30, 1799 TO—WILLIAM PARKER, ET AL. H—34—408 "Perry"
- 10 A—27—217 GEORGE DALTON 415 ACRES & Allowance WARRANT—APRIL 15, 1794 SURVEY—SEPT. 6, 1794 PATENT—JUNE 13, 1839 TO—JACOB GRATZ H—42—42
- 11 W—107 M. T. MILLIKEN 415 ACRES & Allowance WARRANT—NOV. 21, 1853 SURVEY—NOV. 30, 1853 PATENT—JUNE 30, 1936 TO—DEPT. OF FOREST & WATERS H—79—244
- 12 A—28—265 JAMES MACMANUS 400 ACRES & Allowance WARRANT—MAY 29, 1850 SURVEY—AUG. 25, 1858 PATENT—APRIL 25, 1824 TO—KATO COAL COMPANY H—79—7
- 13 D—77 ABRAHAM S. VALENTINE 415 ACRES & Allowance WARRANT—NOV. 21, 1853 SURVEY—DEC. 1, 1853 UNPATENTED AT THIS DATE
- 14 A—28—271 SAMUEL LINN 400 ACRES & Allowance WARRANT—NOV. 29, 1850 SURVEY—MAY 15, 1850 PATENT—APRIL 25, 1824 TO—KATO COAL COMPANY H—79—8
- 15 H—9 PHEBE WALN 433 ACRES—163 PERCHES & AIL. WARRANT—APRIL 27, 1793 SURVEY—AUG. 25, 1794 PATENT—JAN. 26, 1799 TO—WILLIAM PARKER, ET AL. H—34—436 "Rose Hill"
- 16 G—394 ANDREW SUMMERS 433 ACRES—163 PERCHES & AIL. WARRANT—APRIL 27, 1793 SURVEY—AUG. 25, 1793 PATENT—JAN. 26, 1799 TO—WILLIAM PARKER, ET AL. H—35—209 "Worthington"
- 17 B—85 ABILIA DAWES 433 ACRES—163 PERCHES & AIL. WARRANT—APRIL 27, 1793 SURVEY—SEPT. 2, 1794 PATENT—FEB. 25, 1799 TO—WILLIAM PARKER, ET AL. H—35—226 "Tribulation"
- 18 C—183 DAVID CARSKADDEN 400 ACRES & Allowance WARRANT—JUNE 17, 1856 SURVEY—APRIL 28, 1858 PATENT—JAN. 26, 1865 TO—DAVID CARSKADDEN H—58—255
- 19 A—28—262 DAVID CARSKADDEN 100 ACRES & Allowance WARRANT—MAY 28, 1858 SURVEY—JUNE 3, 1858 PATENT—FEB. 1, 1860 TO—CHARLES HEWETT, ET AL. H—74—708
- 20 D—207 SARAH B. MITCHELL 102 ACRES & Allowance WARRANT—OCT. 4, 1859 SURVEY—OCT. 12, 1859 UNPATENTED AT THIS DATE
- 21 A—215 SAMUEL DOBSON 434 ACRES & Allowance WARRANT—APRIL 15, 1794 SURVEY—AUG. 25, 1794 PATENT—JUNE 11, 1839 TO—JACOB GRATZ H—42—40
- 22 P—216 JOSEPH DOBSON 434 ACRES & Allowance WARRANT—APRIL 15, 1794 SURVEY—SEPT. 6, 1794 PATENT—JUNE 13, 1839 TO—JACOB GRATZ H—42—43
- 23 NO SURVEY PETER DOBSON WARRANT FOR—400 ACRES DATED—APRIL 15, 1794 WHICH BY DESCRIPTION MUST COVER AREA INDICATED ON THE MAP.
- 24 A—139 MANUEL JOSEPHSON 433 ACRES—163 PERCHES & AIL. WARRANT—JAN. 8, 1793 SURVEY—AUG. 16, 1794 PATENT—JUNE 11, 1839 TO—JOSEPH GRATZ, ET AL. H—42—56
- 25 A—131 JAMES GLENTWORTH 433 ACRES—163 PERCHES & AIL. WARRANT—JAN. 8, 1793 SURVEY—AUG. 16, 1794 PATENT—JAN. 29, 1865 TO—JOSEPH GRATZ, ET AL. H—42—48
- 26 A—130 LEWIS FARMER 415 ACRES & Allowance WARRANT—JAN. 8, 1793 SURVEY—AUG. 16, 1794 PATENT—AUG. 10, 1837 TO—WILLIAM A. THOMAS H—94—67
- 27 P—217 LUKE MISNER 433 ACRES—163 PERCHES & AIL. WARRANT—MARCH 3, 1794 SURVEY—AUG. 22, 1794 PATENT—JAN. 29, 1865 TO—DAVID CARSKADDEN H—58—251
- 28 G—401 JONATHAN HERVEY 433 ACRES—163 PERCHES & AIL. WARRANT—JAN. 27, 1793 SURVEY—SEPT. 2, 1794 PATENT—JAN. 26, 1799 TO—WILLIAM PARKER, ET AL. H—34—418 "Bittent"
- 29 D—155 MOSES HOOD 433 ACRES—40 PERCHES & AIL. WARRANT—MARCH 3, 1794 SURVEY—AUG. 21, 1794 PATENT—JULY 1, 1848 TO—SHUMAN H. FURST, ET AL. H—80—75
- 30 A—14 MARGARET BUTLER 433 ACRES—163 PERCHES & AIL. WARRANT—MARCH 3, 1794 SURVEY—AUG. 22, 1794 PATENT—JAN. 29, 1865 TO—DAVID CARSKADDEN H—58—249
- 31 P—183 JOHN RUSSELL 433 ACRES—163 PERCHES & AIL. WARRANT—MARCH 3, 1794 SURVEY—AUG. 22, 1794 PATENT—JUNE 13, 1839 TO—JOSEPH D. ELLIS H—71—731
- 32 A—202 ABRAHAM SINGER 415 ACRES & Allowance WARRANT—JAN. 8, 1793 SURVEY—AUG. 16, 1794 PATENT—AUG. 11, 1837 TO—WM. A. THOMAS H—94—69
- 33 A—280 JOHN SINGER 415 ACRES & Allowance WARRANT—JAN. 8, 1793 SURVEY—AUG. 22, 1794 PATENT—AUG. 10, 1837 TO—WILLIAM A. THOMAS H—94—68
- 34 A—244 JOHN WEISS 433 ACRES—163 PERCHES & AIL. WARRANT—JAN. 8, 1793 SURVEY—AUG. 16, 1794 PATENT—JUNE 13, 1839 TO—JOHN GRATZ, ET AL. H—42—45
- 35 D—251 DAVID CARSKADDEN 430 ACRES—32 PERCHES & AIL. WARRANT—DEC. 17, 1855 SURVEY—SEPT. 7, 1855 UNPATENTED AT THIS DATE

**A CONNECTED DRAFT:** of thirty-five (35) tracts of land, which when surveyed, were situate as follows: two (2) in Snowshoe Twp., Centre County; fourteen (14) on the waters of Beech Creek, Bald Eagle Twp., Mifflin (now Centre) County; six (6) on Beech Creek, Boggs & Snowshoe Townships, Centre County; four (4) in Bald Eagle Twp., Mifflin (now Centre) County; six (6) on Beech Creek, Boggs Twp., Centre County; two (2) on the waters of Marsh Creek, Bald Eagle Twp., Mifflin (now Centre) County; one (1) on Anderson Path, Bald Eagle Township, Mifflin (now Centre) County. The draft has been constructed from and compared with the original drafts on file in the Division Of Land Records, Bureau Of Archives And History, Historical And Museum Commission, Commonwealth Of Pennsylvania, under the direction of Edward D. Price, Chief.

**IN TESTIMONY WHEREOF:** I have hereunto set my hand and caused the seal of the said Commission to be affixed at Harrisburg, Pennsylvania, this twenty-first day of February, A. D., one thousand nine hundred and eighty six.

LARRY E. TISE, Executive Director  
Historical And Museum Commission

By: Harry E. Whipkey  
HARRY E. WHIPKEY, Director, Bureau Of Archives And History

