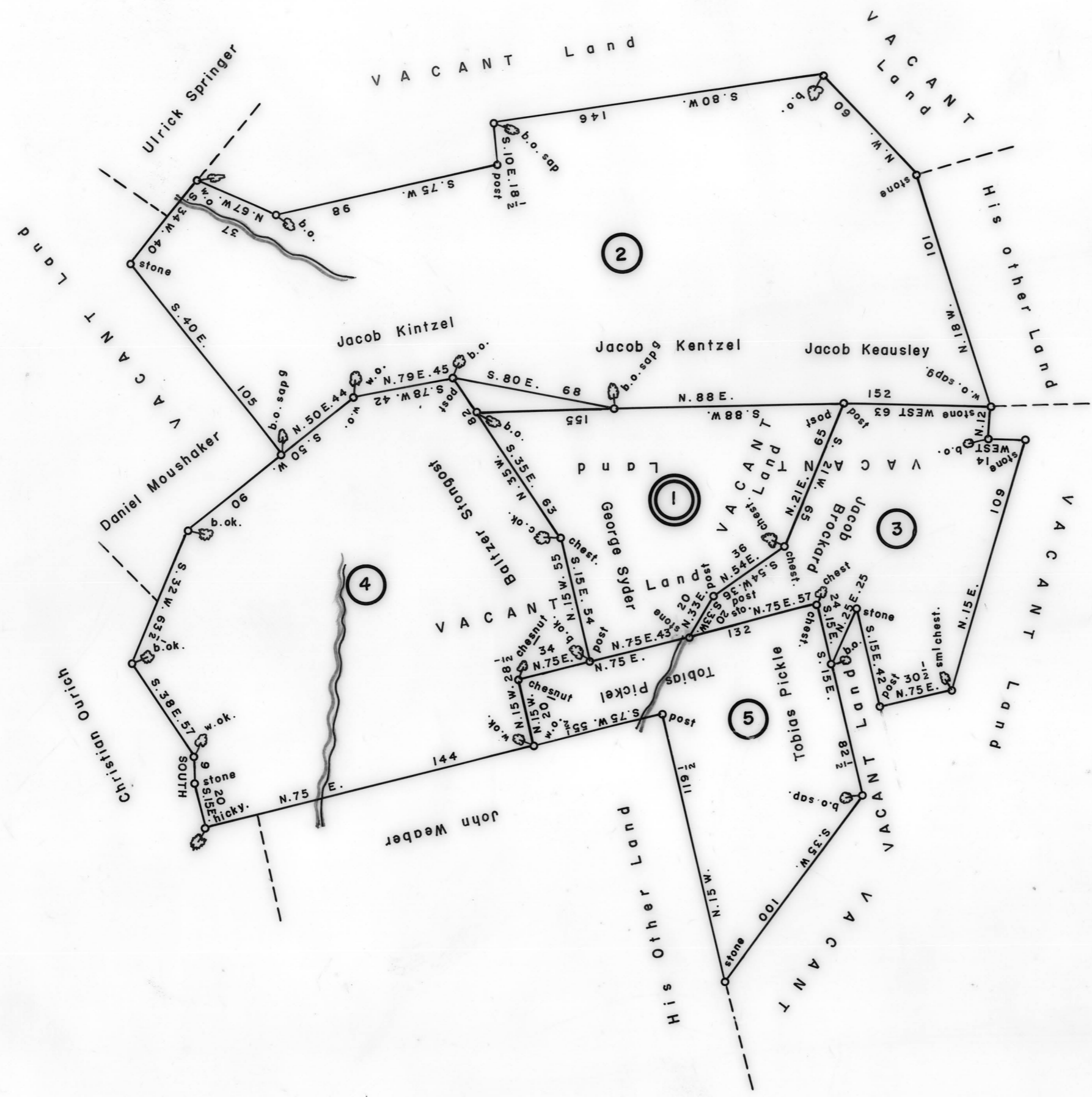


Scale: 1" = 50 Rods



①
A—3—38
GEORGE SEIDER
58 ACRES—80 PERCHES & Allow
Appl. No. 2459—East Side
APPL. DATE APR. 6, 1767
SURVEY MAY 20, 1767
ON WARRANT TO ACCEPT
DATED DEC. 24, 1772
PATENT DEC. 31, 1772
TO—GEORGE SEIDER
AA—13—376
"Brampton Bryan"

②
C—107—91
JACOB KENSLEY
212 ACRES—75 PERCHES & Allow
WARRANT APR. 15, 1747
SURVEY MAY 16, 1754
PATENT JAN. 26, 1761
TO—JACOB KENSLEY
AA—1—350

③
A—81—43
JACOB BROCKARD
60 ACRES—35 PERCHES & Allow
Appl. No. 1045—East Side
APPL. DATE OCT. 9, 1765
SURVEY OCT. 29, 1765
ON WARRANT TO ACCEPT
DATED OCT. 30, 1766
PATENT OCT. 31, 1766
TO—JACOB BROCKARD
AA—8—66
"The Thin Forrest"

④
C—84—173
NICHOLAS HEBLING
144 ACRES—100 PERCHES & Allow
WARRANT DEC. 14, 1785
SURVEY DEC. 27, 1785
PATENT SEPT. 8, 1786
TO—NICHOLAS HEBLING
P—6—451
"Latesoundland"

⑤
C—146—214
TOBIAS PICKLE
56 ACRES & Allowance
WARRANT OCT. 23, 1754
SURVEY OCT. 28, 1754
PATENT OCT. 11, 1768
TO—John Weaver
AA—11—25
"Pusselton"

A CONNECTED DRAFT: of five (5) tracts of land, which when surveyed, were situate as follows: three (3) in Heidelberg Township, Lancaster (now Lebanon) County; one (1) in Tulpehocken Township, Lancaster (now Berks) County; and one (1) in Heidelberg Township, Dauphin (now Lebanon) County. The draft has been constructed from and compared with original drafts on file in the Division of Land Records, Bureau of Archives and History, Historical and Museum Commission, Commonwealth of Pennsylvania, under the direction of Edward D. Price, Chief.

IN TESTIMONY WHEREOF: I have hereunto set my hand and caused the seal of the said Commission to be affixed at Harrisburg, Pennsylvania, this seventh day of January A. D., one thousand nine hundred and eighty five.



LARRY E. TISE, Executive Director
Historical and Museum Commission

By: HARRY E. WHIPKEY
HARRY E. WHIPKEY, Director, Bureau of Archives and History