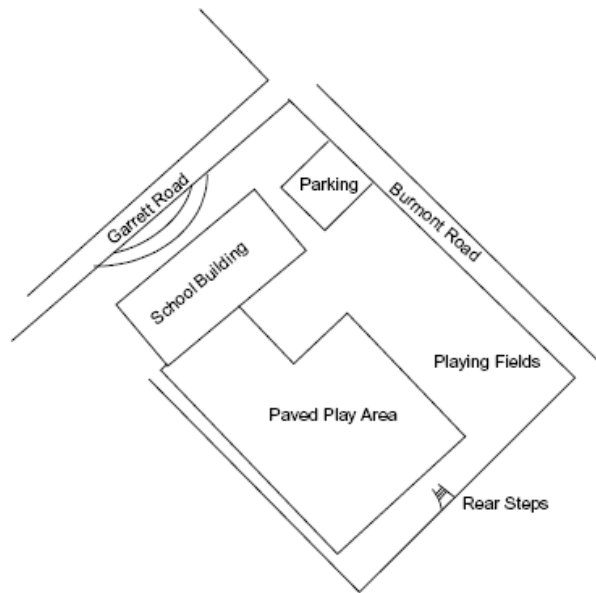
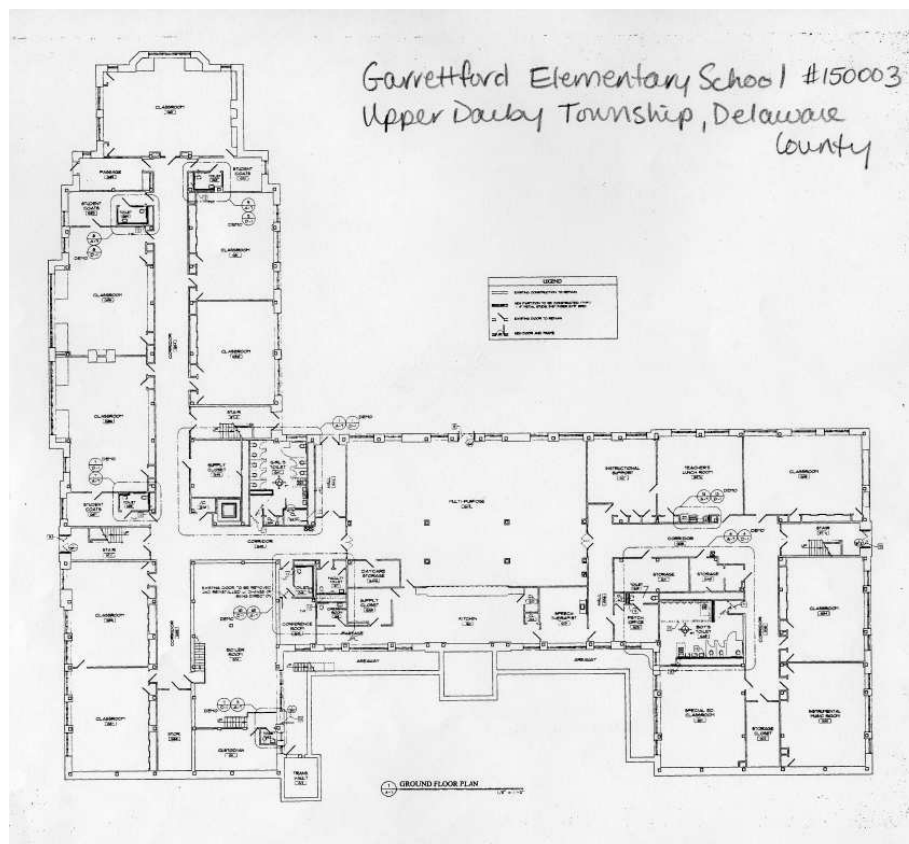


150003 – Garrettford Elementary School





Site plan of Garrettford Elementary



Floor Plan of Garrettford Elementary

150003; Garrettford Elementary School. This school is located at 3830 Garrett Road, Drexel Hill, Pennsylvania, in Upper Darby Township, Delaware County. It is part of the Upper Darby School District. The 1941 school building is set back from Garrett Road by a circular pick-up/drop-off driveway. Concrete walkways and stairs with original metal railings are interspersed with narrow strips of lawn, scattered trees, and bushes between the school and driveway. A paved parking lot is located on the northeast side of the building. Paved playing areas, a playground with modern play equipment, and a grassy playing field with baseball/softball facilities are located behind the school building. A low stone wall lines part of the southwest and southeast sides of the rear lot. Low stone walls also line steps at the rear of the property. The stairs link the school property to the neighboring community.

The three-story Classical Revival school building is a U-plan with a central lobby and classrooms along either side of interior hallways. A one-story kindergarten wing (now used for first grade) extends off of the southeast end of the building. A gymnasium is located at one corner of the school and a cafeteria is centrally located on the ground floor. The school building is a steel-reinforced structure with stone walls. A brick wall is located on a section of the third story above the kindergarten wing. Interior walls are concrete block. The building sits on a stone foundation. The center section of the building has a side-gable roof with a wood cupola. The two side sections have hipped roofs. The roofs are covered with asphalt shingles. The building has a stuccoed hollow-tile chimney. Accessed via marble steps with original metal railings, the main entrance consists of wood pane-and-panel doors with a multi-pane transom and pane-and-panel sidelights. The entrance is set into a two-story surround with fluted pilasters and a paneled crown. The building is banked so that the front façade is two stories tall. Circa 1986 aluminum double-hung windows with faux muntins and closed transoms light the building.

The main entryway contains a vestibule with wood double doors. The vestibule features two original mosaics. The main lobby features original floor tiles with a decorative pattern, acoustic ceiling tiles, walls with tiles and plaster, a wood bench, and a plaque. Hallways features similar walls, floors, and ceilings, in addition to wood benches, inset display units, and pane-and-panel wood doorways with molded surrounds. Stairwells feature steel staircases with brass railing details. An original safe is located in the main office. The library features original interior wood multi-pane windows opening to the third-floor hallway, and wood bookcases. The gymnasium features a tile floor, modern ceiling tiles, permanent sports equipment, and a proscenium stage for the room's secondary use as an auditorium. The stage has a wood floor. The wall with the stage features wood paneling and molding. The cafeteria features a tile floor, acoustic ceiling tiles, partially tiled support columns, and movable tables with chairs. The original kindergarten rooms feature fireplaces. One has a bay window. Specialized classrooms include, or have included, kindergarten rooms, sewing rooms, a wood shop, and music rooms.

This school building replaced two earlier schools, as represented by the three datestones located on the current building. It stands on ground originally purchased for educational purposes in 1909. A ca. 1909 ten-classroom school building built on the site was enhanced by a twenty-one-classroom school building constructed on the property ca. 1921. These were both replaced by the current school, built in 1941. The existing school opened in September 1942. The new school was constructed due to increasing enrollment needs. The school's name refers to the Garretts, a prominent family in the area, and a ford/creek located nearby. Minor changes, such as window and roof replacements, have occurred ca. 1986 and later; however, the design of the school and many architectural details have remained intact.

(Wayne McAllister, Principal, pers. com., April 7, 2006.)
Historical information provided by the school.

United States Geological Survey

1992 *Lansdowne NE, PA Aerial Photograph*. USGS Reference Number 40075-B3-02-PHT. Created on April 14, 1992.

1994 *Lansdowne, PA Quadrangle*. 7.5 minute series. Topography by planetable surveys 1939-1940. Revised from aerial photographs taken 1965. Field checked 1967. Revised 1994. Denver, CO or Reston, VA.



Aerial View of Garrettford Elementary School

More Photos of Garrettford Elementary

