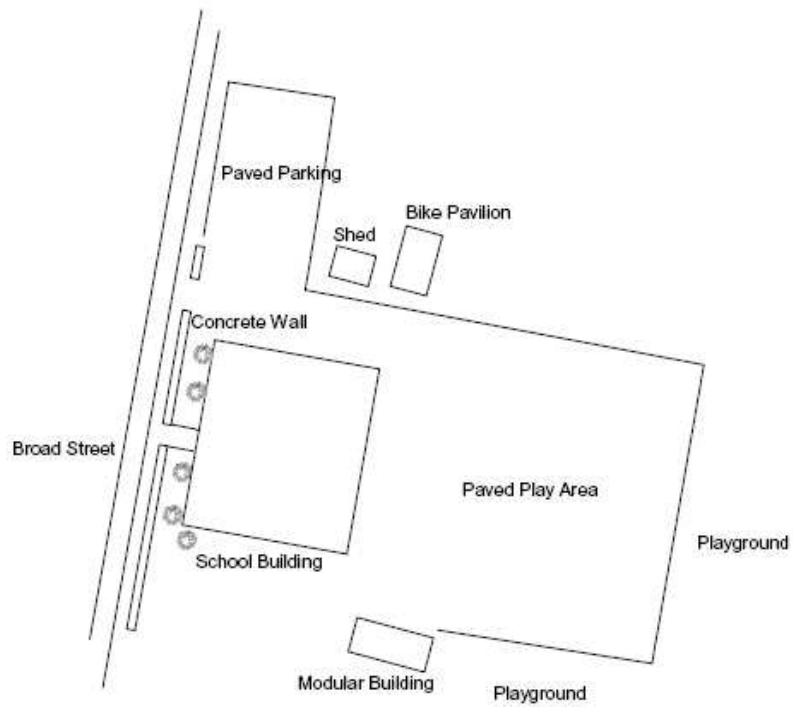
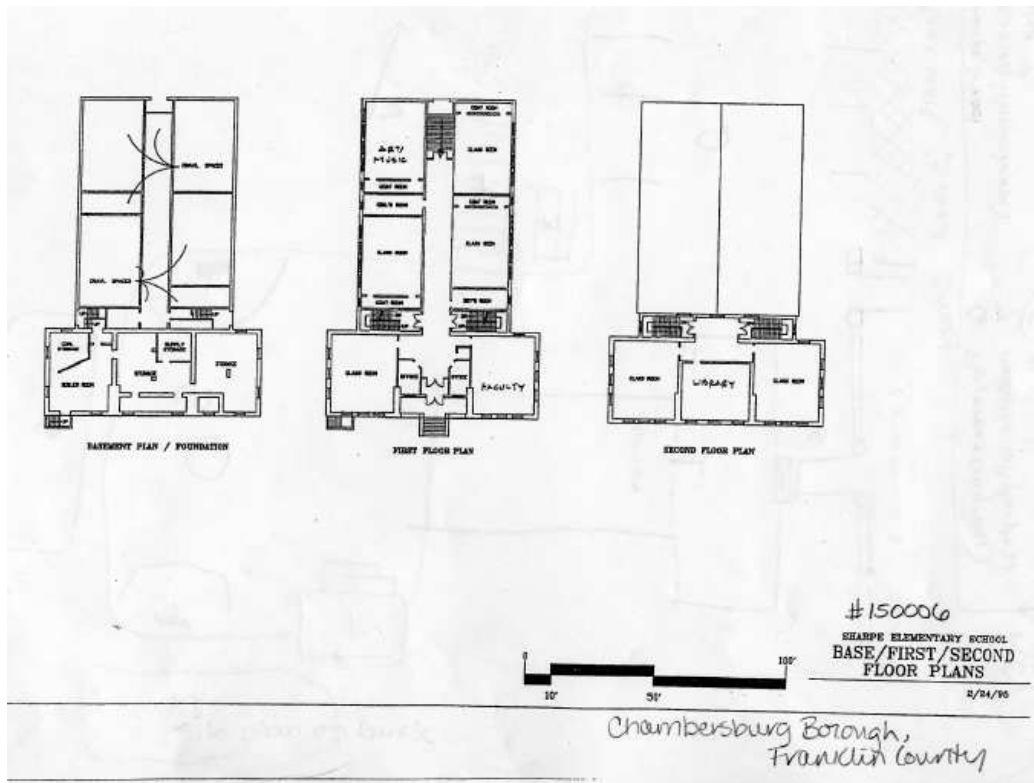


150006 – Sharpe Elementary School





Site Plan of Sharpe Elementary



Floor Plans of Sharpe Elementary

150006; Mary B. Sharpe Elementary School. This school is located at 850 Broad Street, Chambersburg, Pennsylvania, in Chambersburg Borough, Franklin County. It is part of the Chambersburg Area School District. The 1908 school building is located near the front of the property, separated from Broad Street by a public sidewalk, a concrete wall with a metal railing, and a narrow lawn with shrubs. The rear of the lot is dominated by a large paved play area. A central concrete walkway leads to the main entrance and an asphalt driveway leads to a small parking lot and the rear paved playground. The paved play area features a basketball court. Lawn areas border the paved playground. Ancillary buildings and playground equipment are located on the lawn. The property features scattered trees and shrubs. A flagpole is located at the front of the school.

The original two-and-one-half-story Romanesque Revival school building was a rectangular structure converted into a T-plan structure by a 1924 addition. The original school building was arranged with two classrooms on the first and second floors, flanking a lobby with offices and a library, respectively. The one-story four-classroom 1924 addition extends off the rear of the 1908 school. The 1908 building is a brick structure set on a stone foundation. The exterior walls feature decorative stone work over the arcaded entrance and contrasting sandstone window lintels and water table details. The hipped roof is covered with asphalt shingles. Hipped dormers lit by three-over-one double-hung windows and a single brick interior chimney with a decorative inset panel extend from the roof. The main entrance is a pane-and-panel wood double door with a transom sheltered by an inset arcaded porch. The building is lit by original six-over-six double-hung wood windows with single-light transoms. Basement windows are casement sash. The one-story 1924 addition reflects the original building, such as its brick structure and multi-pane (eight-over-eight) windows. An all-purpose modular unit on the southwest side of the property was installed ca. 1994 to replace an earlier unit from 1970/71. On the northeast side of the property is a 1956 bicycle pavilion and a gambrel-roof storage shed.

The main entryway of the school features plaster walls and ceilings, hanging fluorescent lights, and wood floors. The library, located on the second floor, is a former classroom. It features a plaster ceiling and walls, fluorescent lights, and wood floors. Specialized rooms include, or have included, a health office and an art/music room. An original freestanding water fountain is located in the 1924 addition hallway. There is no auditorium, cafeteria, or gymnasium.

The original section of this school was constructed in 1908 in the northern section of Chambersburg to address population growth and development. In September 1908, the school opened as the Broad Street School with classes divided into three grades: First Primary (1st and 2nd), Second Primary (3rd and 4th), and Intermediate (5th and 6th). The neighborhood around the school continued to grow, and by the 1920s, plans for a four-room addition to the building were developed. In September 1924, the expanded building opened as an eight-grade school. In 1933, the name of the school was changed to the Mary B. Sharpe School in honor

of a local community member and philanthropist following her untimely death. The honor was "in appreciation of Miss Sharpe's bequest to Chambersburg School District and in recognition of personal gifts to Broad Street School." In 1939, an adjacent property was purchased, which now has the small faculty parking lot. In 1953, the property was expanded slightly with additional land. The bicycle pavilion was constructed in 1956 by a carpentry class at the district's senior high school. A trailer was added to the property in 1970/71 and was later replaced by the extant modular unit. Playground equipment on the property is modern.

(Guidance Counselor, pers. com. with Melissa Timo, April 18, 2006.)
Additional documents provided by the Mary B. Sharpe Elementary School.

United States Geological Survey

1994 *Chambersburg NE, PA Aerial Photograph*. USGS Reference Number 39077-H6-02-PHT. Created on April 15, 1994.

1995 *Chambersburg, PA Quadrangle*. 7.5 minute series. Compiled from imagery dated 1988-89 and other sources. Field checked 1990. Map edited 1995. Denver, CO or Reston, VA.

United States Department of Agriculture

1938 Aerial Photograph AHF 63-22. On file at the Pennsylvania State Archives, Record Group 31, Records of the Department of Commerce, State Planning Board Collection.



Aerial View of Sharpe Elementary School

Other Photos of Sharpe Elementary School

