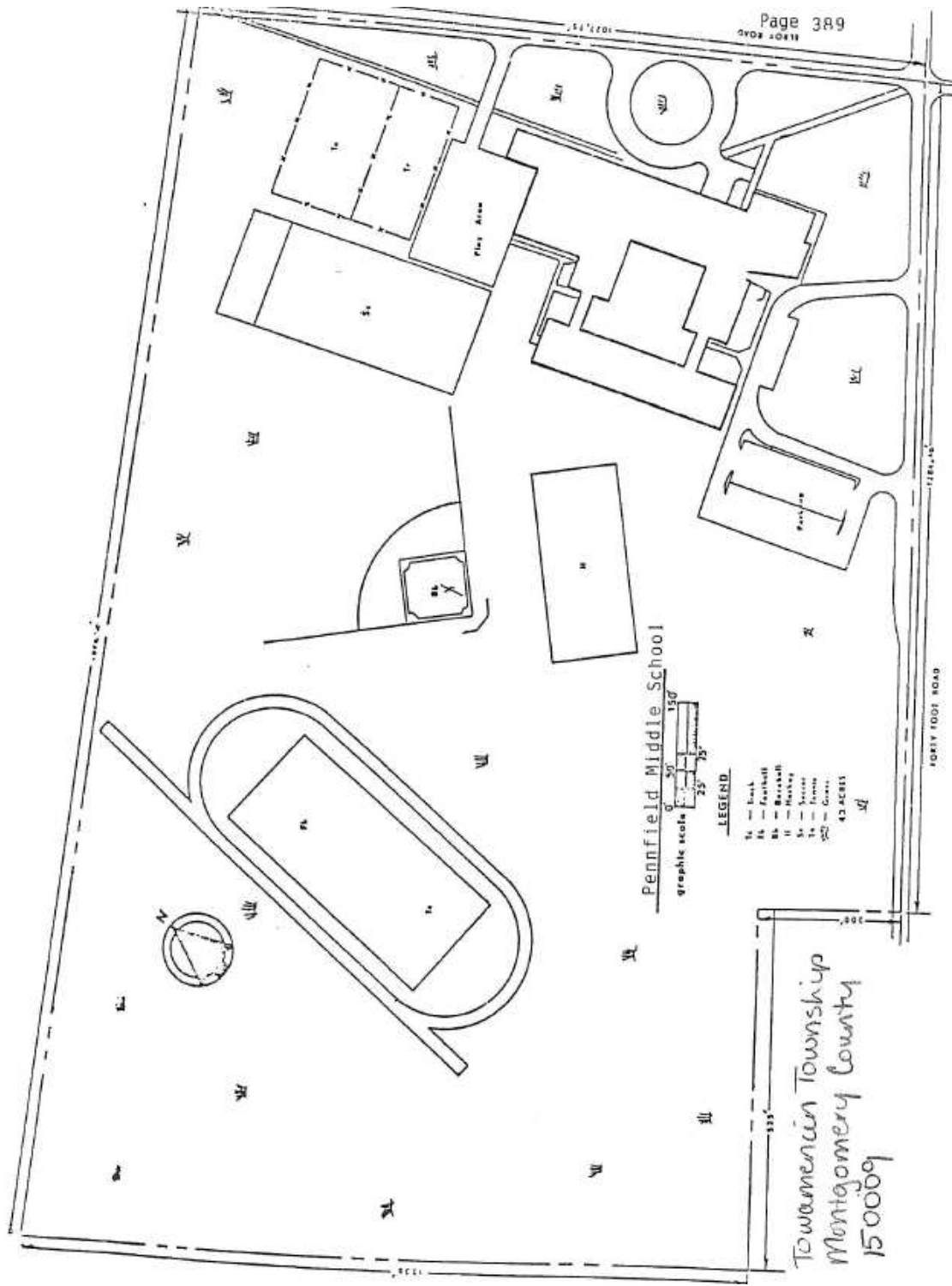


150009 – Pennfield Middle School





Site Plan of Pennsfield Middle School

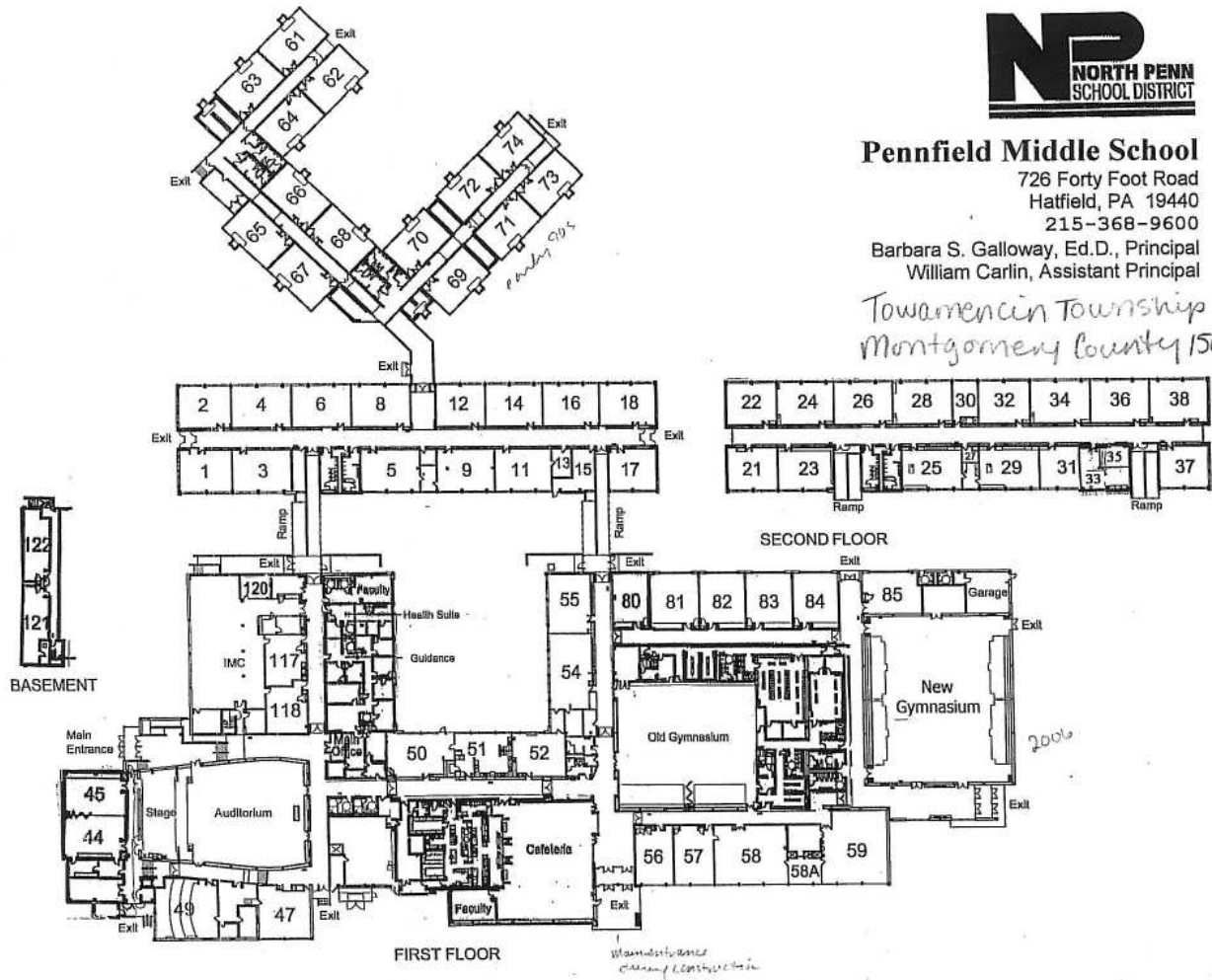


Pennfield Middle School

726 Forty Foot Road
Hatfield, PA 19440
215-368-9600

Barbara S. Galloway, Ed.D., Principal
William Carlin, Assistant Principal

*Towamencin Township
Montgomery County 15009*



Floor Plan of Pennfield Middle School

August 20

150009; Pennfield Middle School. This school is located at 726 Forty Foot Road, Hatfield, Pennsylvania, in Towamencin Township, Montgomery County. It is part of the North Penn School District. The 1964 school building is located at the east corner of the property, at the intersection of Forty Foot Road and Elroy Road. A school sign is located near the sidewalk at the corner. A circular driveway around a parking area and landscaped lawn is located off of Forty Foot Road. A ca. 2006 circular driveway for bus traffic is located off of Elroy Road, replacing an earlier circular driveway of a different configuration. A large paved parking area is located on the northwest side of the school, beyond an area of current construction. Fields for soccer, football, and baseball are located southwest of the school building. The property also features a water retention pond, concrete walkways, and scattered trees.

The 1964 building forms a hollow square or "O" formed by a one-story U-plan building section which connects to a two-story rectangular plan building section. Access to the two-story building section is via two enclosed ramp bridges. Large spaces such as the gymnasium, auditorium, cafeteria, and IMC (library) are spaced out in the U-plan section of the building. Interior hallways with classrooms connect these spaces. A new gymnasium, which has been under construction since 2006, is located at the northwest end of the building, next to the original gym. The 1964 concrete-block and steel structure is clad in brick and stucco. The building sits on a concrete slab foundation. The flat roof is covered with rubber membrane. Metal flues are visible. The building is lit primarily by new metal-frame picture and awning windows. The main entrance, oriented to Forty Foot Road, has been rebuilt during the current construction project. New red metal doors are surrounded by fixed windows. The school is currently using the Elroy Road entrance as a main entrance. This "bus" entrance is sheltered by a flat-roof overhang supported by brick columns. One-story frame modular classrooms on the southwest side of the building are side-gable structures lit by casement windows.

The original main entrance was inset into the building. This area has been enclosed and the new main entrance pushed out. The expanded lobby features terrazzo floor tiles, acoustic ceiling tiles, decorative brick walls and a short brick wall enclosing an indoor raised "garden" area. School hallways feature terrazzo floor tiles, acoustic ceiling tiles, and walls with sections of exposed concrete block, paneling, ceramic tiles, and lockers. Water fountains and inset display units are also located along the hallways. Wood classroom doors, each with a single pane, are inset. The original gymnasium, split into girls and boys sections, features a painted wood floor, a ceiling truss, acoustic ceiling tiles, original suspended basketball hoops, original wood bleachers, and concrete-block walls. Locker rooms were redone in 2006. The auditorium features concrete-block walls, acoustic ceiling tiles, wood paneling, a wood stage, and new seats. The cafeteria features terrazzo floor tiles, acoustic ceiling tiles, ceramic tile walls, and folding tables. The kitchen was redone in 2006. The IMC was also redone in 2006. It features new carpeting, acoustic ceiling tiles, and wood shelving. Specialized classrooms include, or have included, cooking and sewing rooms, music rooms, rooms for

industrial arts, science, health, technology, and art. A choral/band room has a tiered floor.

The school opened in September 1964 as Pennfield Junior High School for students in grades seven to nine. In planning since 1956, the school was the second of its kind in a newly consolidated North Penn Joint School System (North Penn School District) to accommodate increasing enrollment numbers. In design, it is similar to Pennbrook Junior High School (Middle School), which opened in 1959. The name Pennfield was chosen by combining pieces of "North Penn" and "Hatfield." The school was constructed on agricultural parcels near the edge of Hatfield Borough. Pennfield Junior High School has since been renamed Pennfield Middle School. Construction of a new gymnasium, music rooms, computer labs, locker rooms, additional classrooms, and main entrance lobby, as well as renovation of existing spaces, were ongoing in 2006.

(Toby Hilbert, Facilities Supervisor, pers. com., November 2, 2006)
Historical information provided by Pennfield Middle School.

United States Department of Agriculture

1971 Aerial Photograph AHO-2MM-299. Created on August 6, 1971. On file at the Pennsylvania Geological Survey Library, Middletown, Pennsylvania.

United States Geological Survey

1992 *Telford SW, PA Aerial Photograph*. USGS Reference Number 440075-C3-04-PHT. Created on March 29, 1992.

1993 *Telford SE, PA Aerial Photograph*. USGS Reference Number 40075-C3-03-PHT. Created on April 14, 1993.

2000 *Telford, PA Quadrangle*. 7.5 minute series. Derived from imagery taken 1995 and other sources. Photoinspected using imagery taken 1997. Boundaries, other than corporate revised 2000. Denver, CO.



Aerial View of Pennsfield Middle School

More Photos of Pennsfield Middle School

