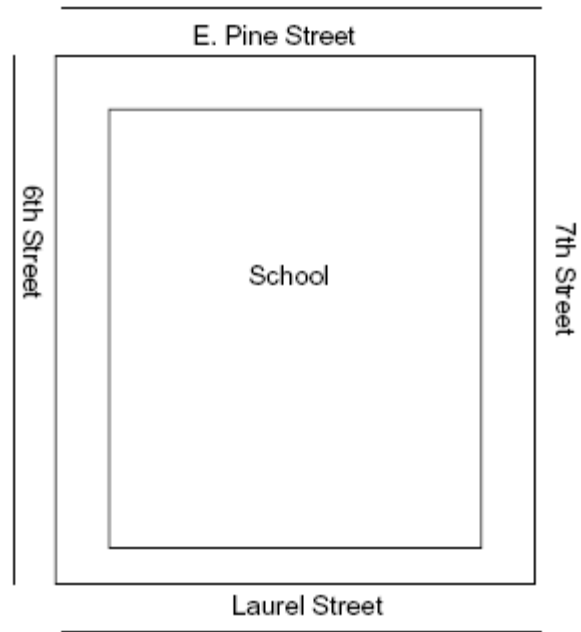
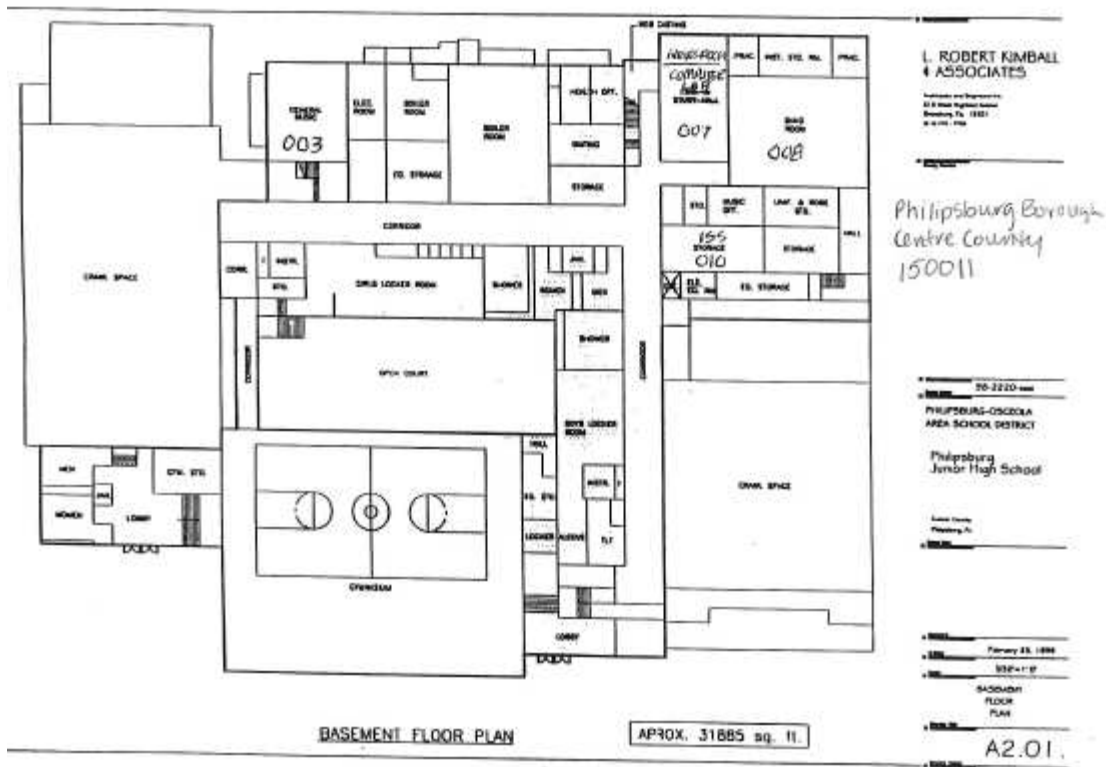


150011 – Philipsburg – Osceola Junior High





Site Plan for Philipsburg-Osceola Junior High



Floor Plan of Philipsburg-Osceola Junior High School

150011; Philipsburg-Osceola Junior High School. This school is located at 100-130 N. 6th Street, Philipsburg, Pennsylvania in Philipsburg Borough, Centre County. It is part of the Philipsburg-Osceola Area School District. The school is centrally located on a sidewalk-lined urban block. A narrow strip of grass with scattered trees lines the building. Narrow paved parking lots are located at the northwest and southeast sides of the building. A modular classroom is located at the western corner of the property.

The building was built in 1887 with an addition added in 1914. A 1934 fire destroyed the original 1887 core of the school. The 1914 addition became the core of the current school building. The school was re-built after the fire forming a U-plan structure two stories tall with a raised basement. A 1973 addition created a roughly rectangular building, arranged around a central courtyard. An auditorium and cafeteria are located along the southeast leg of a U-plan hallway. The gymnasium (1973 addition) is located on the southwest side of the building. Classrooms are located along the northwest and northeast hallways. The concrete and brick structure features Art Deco geometric cast stone designs. The building sits on a stone foundation. Rubber membrane covers the flat roof. There are no chimneys. The main entrance, set in a cast stone surround, features a metal-frame glass double door with a transom dated to 1973. Three similar entrances provide direct access to the auditorium from the street. Replacement windows also dating to 1973 light the building. These include triple hopper windows and small windows set into primarily filled-in window bays.

The main entryway accesses a stairwell that leads to additional stairs to the main hallways. The entryway features a plaster ceiling and walls, fluorescent lights, metal and wood stair railings, and terracotta floor tiles. Classroom doors in the hallways are wood with multi-pane transoms. The auditorium, built in the 1930s and renovated in 1973, features cement and tiled floors, acoustic ceiling tiles, fluorescent lights, upholstered seating, and a balcony with wood floors. Three exterior entrances access a small lobby at the rear of the auditorium. The cafeteria features tiled floors, concrete-block walls, dropped ceiling with acoustic ceiling tiles, fluorescent lights, and movable folding tables and chairs. Built after the 1934 fire, the room functioned as the school gymnasium until a new gym was constructed in 1973. The basement hallway functioned as the cafeteria until the room was renovated. The 1973 gymnasium features a wood floor, metal rollaway bleachers, suspended basketball hoops, a ceiling covered with a sprayed acoustic material, and fluorescent lights. A library built in the 1930s has been converted to a technology lab and a wood shop was converted to a music room. The 1973 library is located over the cafeteria. It features carpeting, acoustic ceiling tiles, and hanging fluorescent lights. The one-story modular structure, added to the property ca. 2004, contains two classrooms.

The first school building on the 6th Street site was constructed in 1887 for a growing Philipsburg population. An addition in 1914 added eight classrooms to the structure. Originally housing elementary through high school students, the building remained an elementary and junior high school when a new high school was constructed in 1930. A Thanksgiving-morning fire in 1934 destroyed nearly all of the school, with the exception of the 1914 addition that was saved due to a fire wall. The school was re-built after the fire. In 1950 the Philipsburg school system joined seven other area school systems and, in 1954, merged with the Osceola Mills School District to form the Philipsburg-Osceola Area School District. In 1973 a new gymnasium was constructed, and it appears the old gymnasium was converted to a new cafeteria on the lower level, and a new library on an upper level. The school was also renovated, including replacement of doors, windows, and the electrical system, and auditorium renovation. Circa 2004, a modular classroom unit was added to the property.

Kerstetter, Rich

n.d. *An Education about Education*. Centre Daily Newspaper article provided by Philipsburg-Osceola Junior High School.

United States Department of Agriculture

1938 Aerial Photograph AQG-23-62. Created on October 11, 1938. On file at the Pennsylvania State Archives, Record Group 31, Records of the Department of Commerce, State Planning Board Collection.

United States Geological Survey

1993 *Philipsburg SW, PA Aerial Photograph*. USGS Reference Number 40078-H2-04-PHT. Created on April 18, 1993.

1997 *Philipsburg, PA Quadrangle*. Topography compiled 1957. Planimetry derived from imagery taken 1988. Photoinspected using imagery dated 1994. Survey control current as of 1959. Boundaries, other than corporate, revised 1997. Denver, CO.



Aerial View of Philipsburg-Osceola Junior High

More Photos of Philipsburg-Osceola Junior High School

