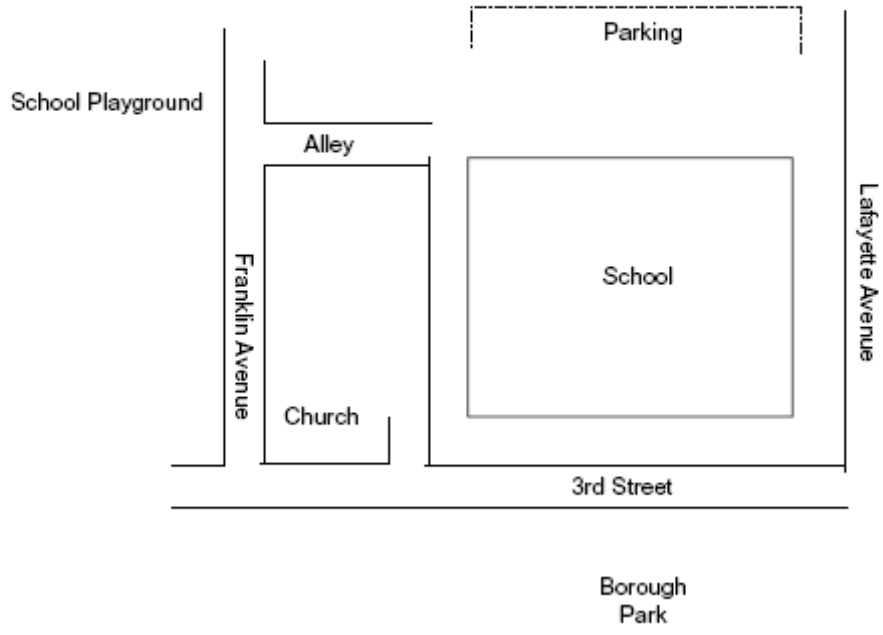
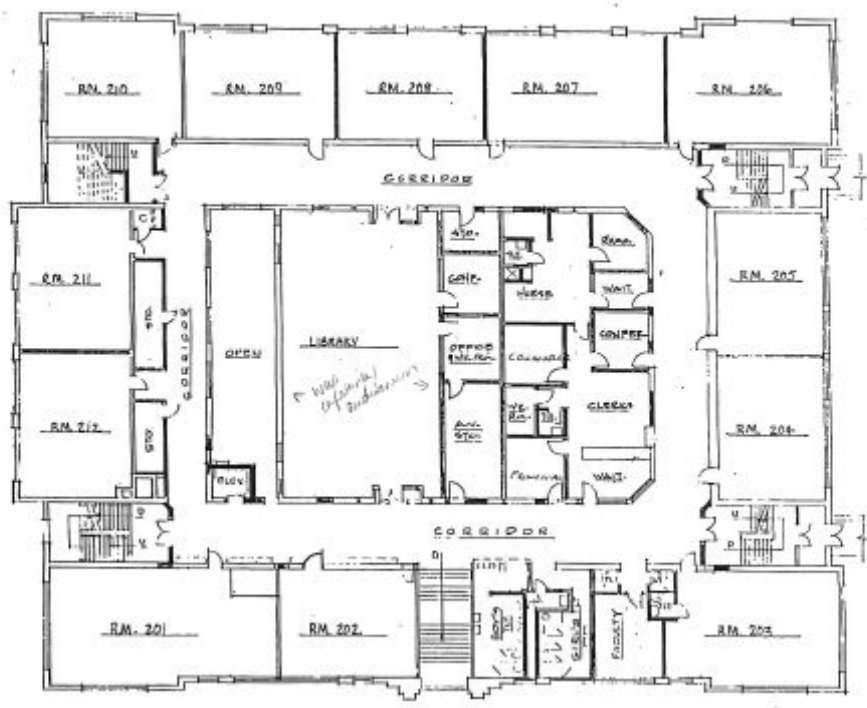


150031 – S.S. Palmer Elementary School





Site Plan of S.S. Palmer Elementary School



First Floor Plan of S.S. Palmer Elementary

150031; S.S. Palmer Elementary School. This school is located at 298 Lafayette Avenue, Palmerton, Pennsylvania, in Palmerton Borough, Carbon County. It is part of the Palmerton Area School District. The 1924 school is situated on a small corner lot, set on a berm behind a strip of grass with scattered bushes and small trees, and a wide concrete sidewalk. A concrete staircase leading to the main entrance features brick walls with cast stone caps and metal railings. A school bell belonging to the District's non-extant Delaware Elementary School is located on the property. A small paved parking area partially surrounded by chain-link fencing is located at the rear of the property. A playground is located off-site, at the end of an alley. Previously a coal yard, the lot now features a paved play area, paved basketball court, and a woodchip-lined lot with modern playground equipment.

The 1924 Collegiate Gothic school building is a three-story rectangular structure. The center portion of the south side appears to be a three-story in-fill addition of classrooms constructed in 1929. It matches the original in construction and design. The center of each floor has, or previously had, a large room such as a gymnasium or auditorium/cafeteria. Interior hallways surround these spaces. Classrooms are located along the exterior walls. The auditorium/cafeteria room has been converted to a library and offices and a new cafeteria has been constructed in what had previously been shop classrooms. The building is a brick structure set on a brick foundation. Cast stone details include window and door surrounds, crests, and a decorative water table. The flat roof is covered in a combination of built-up tar and unknown materials added in 2006. The building has a brick interior chimney. The main entrance contains modern metal-frame glass double doors and a pointed arch transom set into a decorative cast stone surround. Cast stone elements visually connect the entrance to a clock tower centered on the front façade. A flagpole extends from the tower. All windows were replaced in the 1980s. Some bays are closed with solid panels.

The main entrance on the ground level leads directly to a staircase accessing the main hallway on the first floor. Plaques are located on the walls of the staircase. Hallways feature vinyl floor tiles, dropped acoustic tile ceilings, fluorescent lights, painted plaster walls, display units, benches and modern wood and glass classroom doors. Lockers dating to a renovation in the 1980s are located on the second floor (upper story). A gymnasium with a wood floor, original concrete bleachers, and suspended basketball hoops is located on the ground floor. The school was remodeled in the 1980s. The combined auditorium/cafeteria that originally existed above the gymnasium was converted to a library and offices. The cafeteria was moved to a new location. There is no current auditorium. An original balcony was enclosed and converted to a technology room. Classrooms feature vinyl tile floors, carpeting (kindergarten only), acoustic ceiling tiles, and fluorescent lights. Specialized classrooms include, or have included, wood and metal shops, home economics classrooms for sewing and kitchen activities, and a tiered lecture room.

The school building was completed in 1924. It was named after Steven S. Palmer. Mr. Palmer was the founder of the New Jersey Zinc Company, which he located in this valley in 1898. Mr. Palmer established Palmerton as a planned community/company town. When he died in 1913 the community had two schools that were too small and a need for a high school. The New Jersey Zinc Company donated \$150,000 for a new high school with the stipulation that the school be named in honor of Steven S. Palmer (Don Delich, pers. com., January 25, 2007). According to historical material provided by Palmerton Area High School, an addition was constructed in 1929. The school was converted to a middle school in the 1960s, at which point high school students moved to the new building. The building was completely remodeled and converted to an elementary school in the 1980s.

(Don Delich, teacher, pers. com., January 25, 2007).

Historical information provided by Palmerton Area High School.

United States Department of Agriculture

- 1938 Aerial Photograph AQH-15-37. Created on October 4, 1938. On file at the Pennsylvania State Archives, Record Group 31, Records of the Department of Commerce, State Planning Board Collection.

United States Geological Survey

- 1999 *Palmerton SW, PA Aerial Photograph*. USGS Reference Number
a 40075-G5-04-PHT. Created on April 13, 1999.
- 1999 *Palmerton, PA Quadrangle*. Topography compiled 1951. Planimetry
b derived from imagery taken 1982 and other sources. Photoinspected using imagery dated 1997. Survey control current as of 1960. Boundaries, other than corporate, revised 1999. Denver, CO.



Aerial View of S.S. Palmer Elementary

More Photos of S.S. Palmer Elementary

