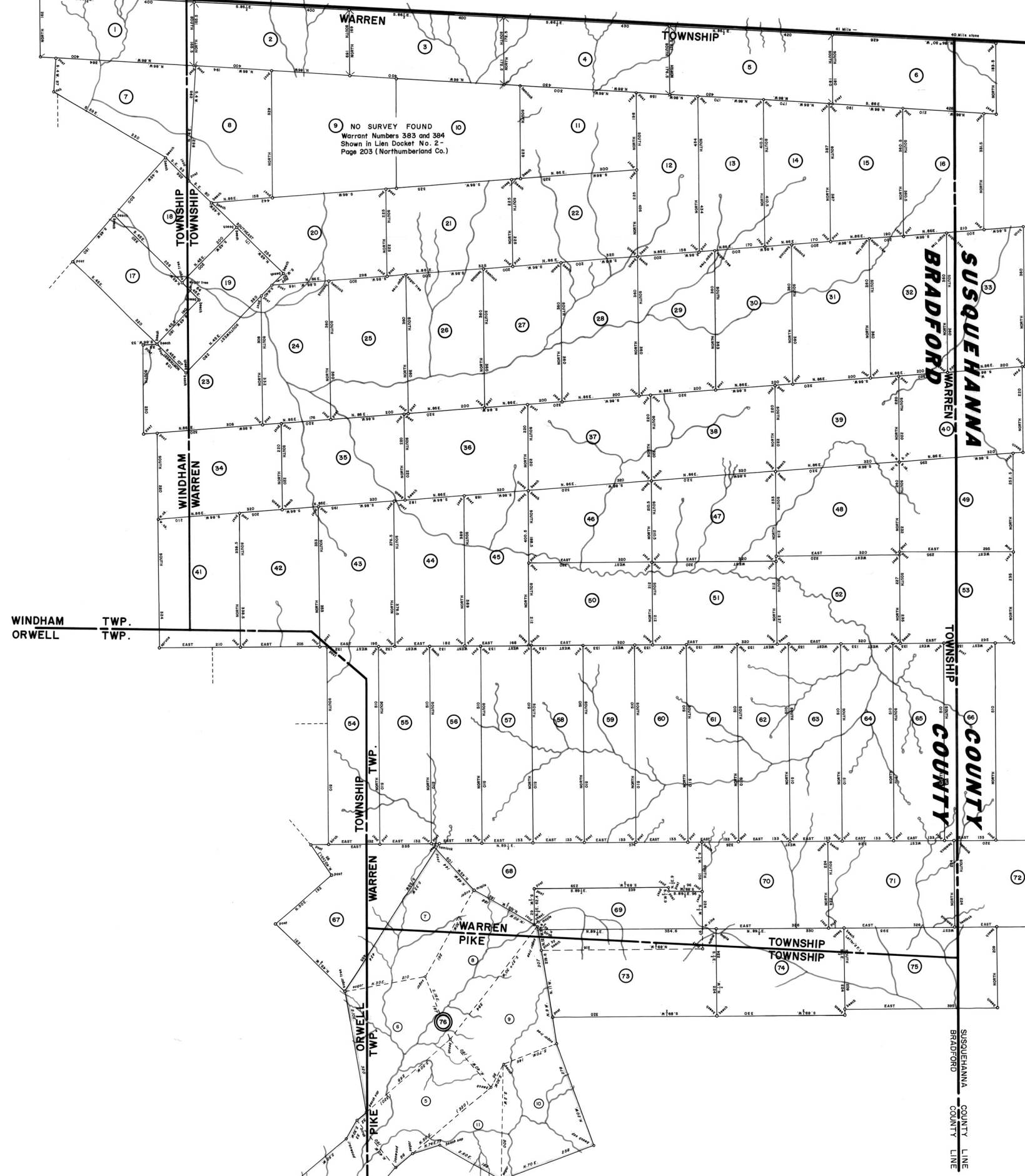


NEW YORK STATE

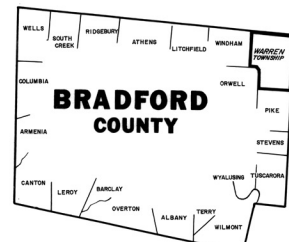
NEW YORK STATE LINE
PENNSYLVANIA STATE LINE



NO SURVEY FOUND
Warrant Numbers 383 and 384
Shown in Lien Docket No. 2 -
Page 203 (Northumberland Co.)

1	11	21	31	41	51
2	12	22	32	42	52
3	13	23	33	43	53
4	14	24	34	44	54
5	15	25	35	45	55
6	16	26	36	46	56
7	17	27	37	47	57
8	18	28	38	48	58
9	19	29	39	49	59
10	20	30	40	50	60
11	21	31	41	51	61
12	22	32	42	52	62
13	23	33	43	53	63
14	24	34	44	54	64
15	25	35	45	55	65
16	26	36	46	56	66
17	27	37	47	57	67
18	28	38	48	58	68
19	29	39	49	59	69
20	30	40	50	60	70
21	31	41	51	61	71
22	32	42	52	62	72
23	33	43	53	63	73
24	34	44	54	64	74
25	35	45	55	65	75
26	36	46	56	66	76
27	37	47	57	67	77
28	38	48	58	68	78
29	39	49	59	69	79
30	40	50	60	70	80
31	41	51	61	71	81
32	42	52	62	72	82
33	43	53	63	73	83
34	44	54	64	74	84
35	45	55	65	75	85
36	46	56	66	76	86

Scale: 1" = 100 Rods.



A CONNECTED WARRANTEE TOWNSHIP MAP of Warren Township in Bradford County. The warrants, surveys and patents bearing, respectively, the dates as above set forth, are constructed from and have been compared with the original drafts on file in the Bureau of Land Records, Department of Community Affairs, Commonwealth of Pennsylvania, under the direction of Edward D. Price, Director.

IN TESTIMONY WHEREOF: I have hereunto set my hand and caused the seal of the said Department to be affixed at Harrisburg, Pennsylvania, this twenty second day of December A. D., one thousand nine hundred and seventy seven.

Ed. D. Price
Secretary of Community Affairs

NOTE: All Borough, Township and County Lines as shown are approximate as of this date, and should not be considered official on this map.