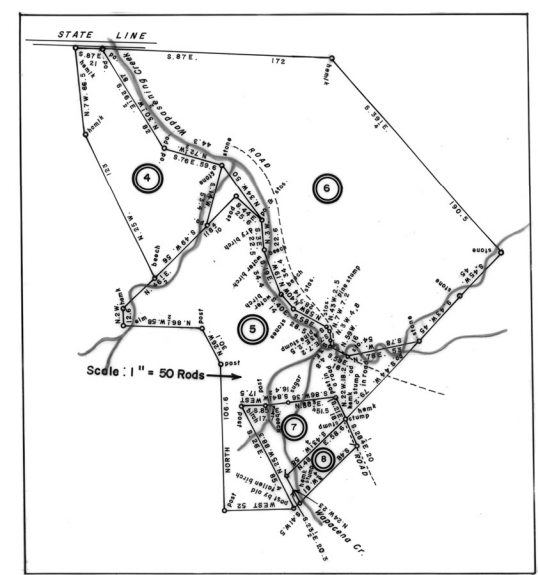
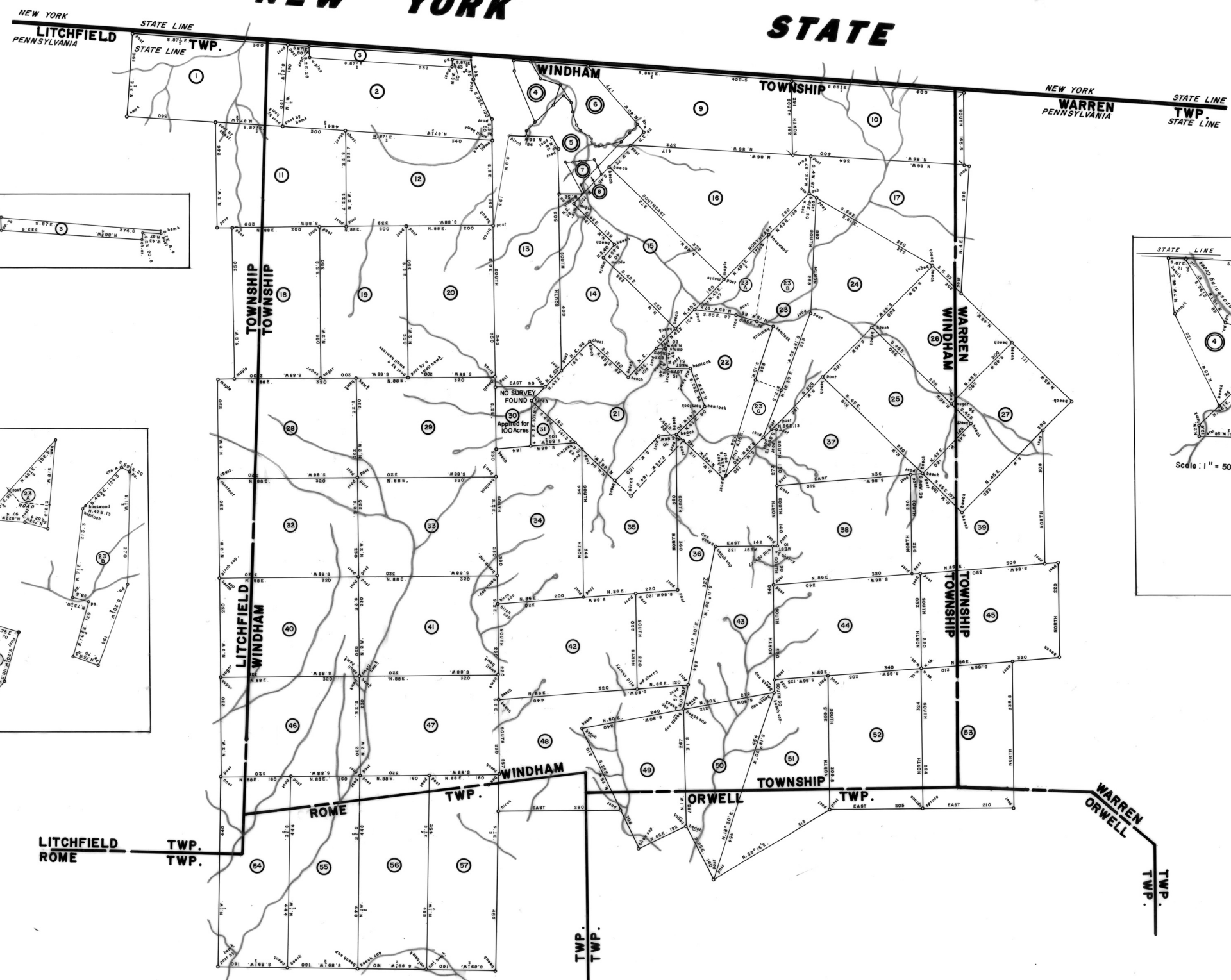
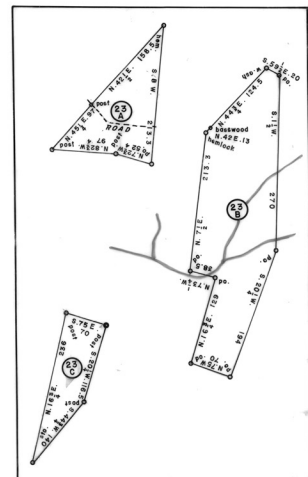
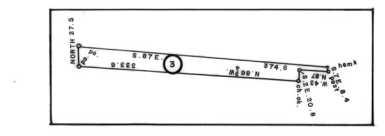


NEW YORK STATE



1 HENRY HEYLI 402 ACRES—40 PERCHES & A1/2 WARRANT FEB. 18, 1793 SURVEY OCT. 17, 1794 PATENT FEB. 18, 1803 To—James Donatious LaRoyde Choumont "Lordsdown"	2 JAMES HEYLI 424 ACRES—40 PERCHES & A1/2 WARRANT FEB. 18, 1793 SURVEY OCT. 17, 1794 PATENT FEB. 18, 1803 To—James Donatious LaRoyde Choumont "Rumford"	3 WYATT BARNES 54 ACRES—10 PERCHES & A1/2 WARRANT FEB. 18, 1793 SURVEY OCT. 17, 1794 PATENT FEB. 18, 1803 To—WYATT BARNES "Rumford"	4 STEPHEN MOSEY 51 ACRES—40 PERCHES & A1/2 WARRANT JUL. 7, 1793 SURVEY JUL. 21, 1793 PATENT JUL. 21, 1793 To—William & Nehemiah Platt "Rumford"
5 DANIEL BROEMAKER 34 ACRES—10 PERCHES & A1/2 WARRANT JUL. 7, 1793 SURVEY JUL. 17, 1794 PATENT NOV. 8, 1804 To—DANIEL BROEMAKER "Lordsdown"	6 PARLEY JOHNSON 194 ACRES—40 PERCHES & A1/2 WARRANT OCT. 17, 1794 SURVEY OCT. 17, 1801 PATENT FEB. 18, 1803 To—PARLEY JOHNSON "Rumford"	7 SAMUEL B. BROEMAKER 16 ACRES—10 PERCHES & A1/2 WARRANT FEB. 18, 1793 SURVEY OCT. 17, 1794 PATENT FEB. 18, 1803 To—SAMUEL B. BROEMAKER "Rumford"	8 BETJ SMITH 7 ACRES—10 PERCHES & A1/2 WARRANT JUL. 7, 1793 SURVEY JUL. 21, 1793 PATENT JUL. 21, 1793 To—BETJ SMITH "Rumford"
9 SAMUEL WILCOX 170 ACRES & A1/2 WARRANT JUL. 28, 1797 SURVEY SEP. 13, 1797 PATENT FEB. 18, 1803 To—Samuel Wilcox "Lordsdown"	10 NABLOUGH FRAZIER 382 ACRES—40 PERCHES & A1/2 WARRANT JUL. 28, 1797 SURVEY SEP. 13, 1797 PATENT FEB. 18, 1803 To—Charles & Nancy Cook & Wm "Lordsdown"	11 PAUL LUNDY 416 ACRES—40 PERCHES & A1/2 WARRANT FEB. 18, 1793 SURVEY OCT. 17, 1794 PATENT FEB. 18, 1803 To—James Donatious LaRoyde Choumont "Emsworth"	12 JAMES LUNDY 416 ACRES—40 PERCHES & A1/2 WARRANT FEB. 18, 1793 SURVEY OCT. 17, 1794 PATENT FEB. 18, 1803 To—James Donatious LaRoyde Choumont "Emsworth"
13 JOHN TAWSON 424 ACRES—40 PERCHES & A1/2 WARRANT JUL. 7, 1793 SURVEY JUL. 17, 1794 PATENT MAY 9, 1810 To—Phineas Bond "Avonora"	14 JOHN HUNTSMAN 347 ACRES—40 PERCHES & A1/2 WARRANT JUL. 7, 1793 SURVEY JUL. 17, 1794 PATENT MAY 9, 1810 To—Phineas Bond "Litchfield"	15 JOHN BROWN 212 ACRES & A1/2 WARRANT MAY 9, 1794 SURVEY MAY 17, 1794 PATENT JUL. 21, 1794 To—John Wadsworth "Finchcreek"	16 THOMAS CLARK 424 ACRES—40 PERCHES & A1/2 WARRANT JUL. 7, 1793 SURVEY JUL. 21, 1793 PATENT JUL. 21, 1793 To—THOMAS CLARK "Dundas"
17 JOHN PABE 391 ACRES—40 PERCHES & A1/2 WARRANT JUL. 7, 1793 SURVEY JUL. 17, 1794 PATENT MAY 9, 1810 To—James Donatious LaRoyde Choumont "Emsworth"	18 ROSER GRIFFIN 416 ACRES—40 PERCHES & A1/2 WARRANT FEB. 18, 1793 SURVEY SEP. 13, 1794 PATENT FEB. 18, 1803 To—James Donatious LaRoyde Choumont "Southwick"	19 MUSH GRIFFIN 416 ACRES—40 PERCHES & A1/2 WARRANT FEB. 18, 1793 SURVEY SEP. 13, 1794 PATENT FEB. 18, 1803 To—James Donatious LaRoyde Choumont "Southwick"	20 HENRY LUNDY 416 ACRES—40 PERCHES & A1/2 WARRANT FEB. 18, 1793 SURVEY OCT. 17, 1794 PATENT FEB. 18, 1803 To—James Donatious LaRoyde Choumont "Munichwary"
21 DANIEL SOANE 432 ACRES—40 PERCHES & A1/2 WARRANT MAY 9, 1794 SURVEY DEC. 22, 1815 PATENT FEB. 18, 1803 To—DANIEL SOANE "Lordsdown"	22 DANIEL SOANE 385 ACRES—40 PERCHES & A1/2 WARRANT MAY 9, 1794 SURVEY DEC. 22, 1815 PATENT FEB. 18, 1803 To—DANIEL SOANE "Lordsdown"	23 JESSE BRIDLE 301 ACRES—10 PERCHES & A1/2 WARRANT MAY 9, 1794 SURVEY DEC. 22, 1815 PATENT FEB. 18, 1803 To—Joseph Wharton "Emsworth"	24 JAMES BODDEN 301 ACRES—10 PERCHES & A1/2 WARRANT MAY 9, 1794 SURVEY DEC. 22, 1815 PATENT FEB. 18, 1803 To—James BODDEN "Emsworth"
25 JONATHAN PEASE 212 ACRES & A1/2 WARRANT JUL. 7, 1793 SURVEY OCT. 17, 1794 PATENT FEB. 18, 1803 To—JONATHAN PEASE "Emsworth"	26 JESSE SMITH 432 ACRES—40 PERCHES & A1/2 WARRANT FEB. 18, 1793 SURVEY SEP. 13, 1794 PATENT FEB. 18, 1803 To—James Donatious LaRoyde Choumont "Rutland"	27 SAMUEL LUNDY 432 ACRES—40 PERCHES & A1/2 WARRANT FEB. 18, 1793 SURVEY SEP. 13, 1794 PATENT FEB. 18, 1803 To—James Donatious LaRoyde Choumont "Rutland"	28 No Survey Found APPLIED FOR 100 ACRES WARRANT NO SURVEY FOUND CUMPARTED AT THIS DATE "Emsworth"
29 JOHN VAN DER 30 ACRES—40 PERCHES & A1/2 WARRANT JUL. 7, 1793 SURVEY AUG. 10, 1794 PATENT JAN. 11, 1803 To—Samuel Merdith "Springfield"	30 PATRICK GRIFFIN 432 ACRES—40 PERCHES & A1/2 WARRANT FEB. 18, 1793 SURVEY SEP. 13, 1794 PATENT FEB. 18, 1803 To—James Donatious LaRoyde Choumont "Southam"	31 SAMUEL LUNDY 432 ACRES—40 PERCHES & A1/2 WARRANT FEB. 18, 1793 SURVEY SEP. 13, 1794 PATENT FEB. 18, 1803 To—James Donatious LaRoyde Choumont "Rutland"	32 JOSEPH DOAN 32 ACRES—10 PERCHES & A1/2 WARRANT SEPT. 1, 1800 SURVEY JAN. 11, 1803 PATENT FEB. 18, 1803 To—JOSEPH DOAN "Plymouth"
33 JOHN COCHRAN 432 ACRES—40 PERCHES & A1/2 WARRANT FEB. 18, 1793 SURVEY SEPT. 1, 1794 PATENT JUL. 21, 1803 To—James Donatious LaRoyde Choumont "Rutland"	34 HENRY EKERLY 432 ACRES—40 PERCHES & A1/2 WARRANT JUL. 7, 1793 SURVEY AUG. 7, 1794 PATENT FEB. 18, 1803 To—Phineas Bond "Whitehall"	35 CHRISTIAN FIGHT 337 ACRES—40 PERCHES & A1/2 WARRANT AUG. 19, 1794 SURVEY NOV. 2, 1794 PATENT JAN. 11, 1803 To—Samuel Merdith "Litchfield"	36 THOMAS EVANS 432 ACRES—40 PERCHES & A1/2 WARRANT JUL. 7, 1793 SURVEY JUL. 21, 1793 PATENT JUL. 21, 1793 To—THOMAS EVANS "Plymouth"
37 JOHN BIDDLE 222 ACRES & A1/2 WARRANT AUG. 19, 1794 SURVEY JAN. 11, 1803 PATENT JAN. 11, 1803 To—Samuel Merdith "Hollymoot"	38 WILLIAM SMITH 328 ACRES—40 PERCHES & A1/2 WARRANT JUL. 7, 1793 SURVEY AUG. 7, 1794 PATENT FEB. 18, 1803 To—Phineas Bond "Lunsburger"	39 CHARLES SOWERS 328 ACRES—40 PERCHES & A1/2 WARRANT JUL. 7, 1793 SURVEY AUG. 7, 1794 PATENT FEB. 18, 1803 To—Phineas Bond "Lunsburger"	40 SAMUEL BEEDEE 432 ACRES—40 PERCHES & A1/2 WARRANT FEB. 18, 1793 SURVEY SEP. 13, 1794 PATENT FEB. 18, 1803 To—James Donatious LaRoyde Choumont "Argilla"
41 JOHN MORRIS 408 ACRES—40 PERCHES & A1/2 WARRANT JUL. 7, 1793 SURVEY AUG. 7, 1794 PATENT FEB. 18, 1803 To—Phineas Bond "Westminster"	42 SAMUEL BEEDEE 432 ACRES—40 PERCHES & A1/2 WARRANT FEB. 18, 1793 SURVEY SEP. 13, 1794 PATENT FEB. 18, 1803 To—James Donatious LaRoyde Choumont "Argilla"	43 JOHN MORRIS 408 ACRES—40 PERCHES & A1/2 WARRANT JUL. 7, 1793 SURVEY AUG. 7, 1794 PATENT FEB. 18, 1803 To—Phineas Bond "Westminster"	44 BENJAMIN EINES 432 ACRES—40 PERCHES & A1/2 WARRANT JUL. 7, 1793 SURVEY SEP. 13, 1794 PATENT FEB. 18, 1803 To—Phineas Bond "The Land of Coxes"
45 JOHN MORRIS 408 ACRES—40 PERCHES & A1/2 WARRANT JUL. 7, 1793 SURVEY AUG. 7, 1794 PATENT FEB. 18, 1803 To—Phineas Bond "Westminster"	46 MORDECAI ROBERTS 432 ACRES—40 PERCHES & A1/2 WARRANT JUL. 7, 1793 SURVEY SEP. 13, 1794 PATENT FEB. 18, 1803 To—Phineas Bond "Kew"	47 THOMAS EKERLY 432 ACRES—40 PERCHES & A1/2 WARRANT JUL. 7, 1793 SURVEY AUG. 7, 1794 PATENT FEB. 18, 1803 To—Phineas Bond "Comden"	48 ANDREW COCHRAN 432 ACRES—40 PERCHES & A1/2 WARRANT JUL. 7, 1793 SURVEY JUL. 21, 1793 PATENT JUL. 21, 1793 To—James Donatious LaRoyde Choumont "Munichwary"
49 JOHN MORRIS 408 ACRES—40 PERCHES & A1/2 WARRANT JUL. 7, 1793 SURVEY AUG. 7, 1794 PATENT FEB. 18, 1803 To—Phineas Bond "Westminster"	50 SAMUEL BEEDEE 432 ACRES—40 PERCHES & A1/2 WARRANT FEB. 18, 1793 SURVEY SEP. 13, 1794 PATENT FEB. 18, 1803 To—James Donatious LaRoyde Choumont "Argilla"	51 JOHN MORRIS 408 ACRES—40 PERCHES & A1/2 WARRANT JUL. 7, 1793 SURVEY AUG. 7, 1794 PATENT FEB. 18, 1803 To—Phineas Bond "Westminster"	52 ANDREW COCHRAN 432 ACRES—40 PERCHES & A1/2 WARRANT JUL. 7, 1793 SURVEY JUL. 21, 1793 PATENT JUL. 21, 1793 To—James Donatious LaRoyde Choumont "Munichwary"

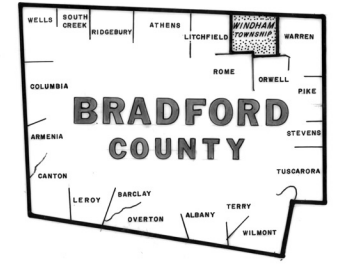


A CONNECTED WARRANTEE TOWNSHIP MAP of Windham Township in Bradford County. The warrants, surveys and patents bearing, respectively, the dates as above set forth, are constructed from and have been compared with the original drafts on file in the Division of Land Records, Bureau of Archives and History, Historical and Museum Commission, Commonwealth of Pennsylvania, under the direction of Edward D. Price, Chief.

IN TESTIMONY WHEREOF, I have hereunto set my hand and caused the seal of the said Commission to be affixed at Harrisburg, Pennsylvania, this fourth day of October A. D. one thousand nine hundred and eighty two.



LARRY E. TISE, Executive Director, Historical and Museum Commission



NOTE: All Borough, Township and County Lines as shown are approximate as of this date, and should not be considered official on this map.