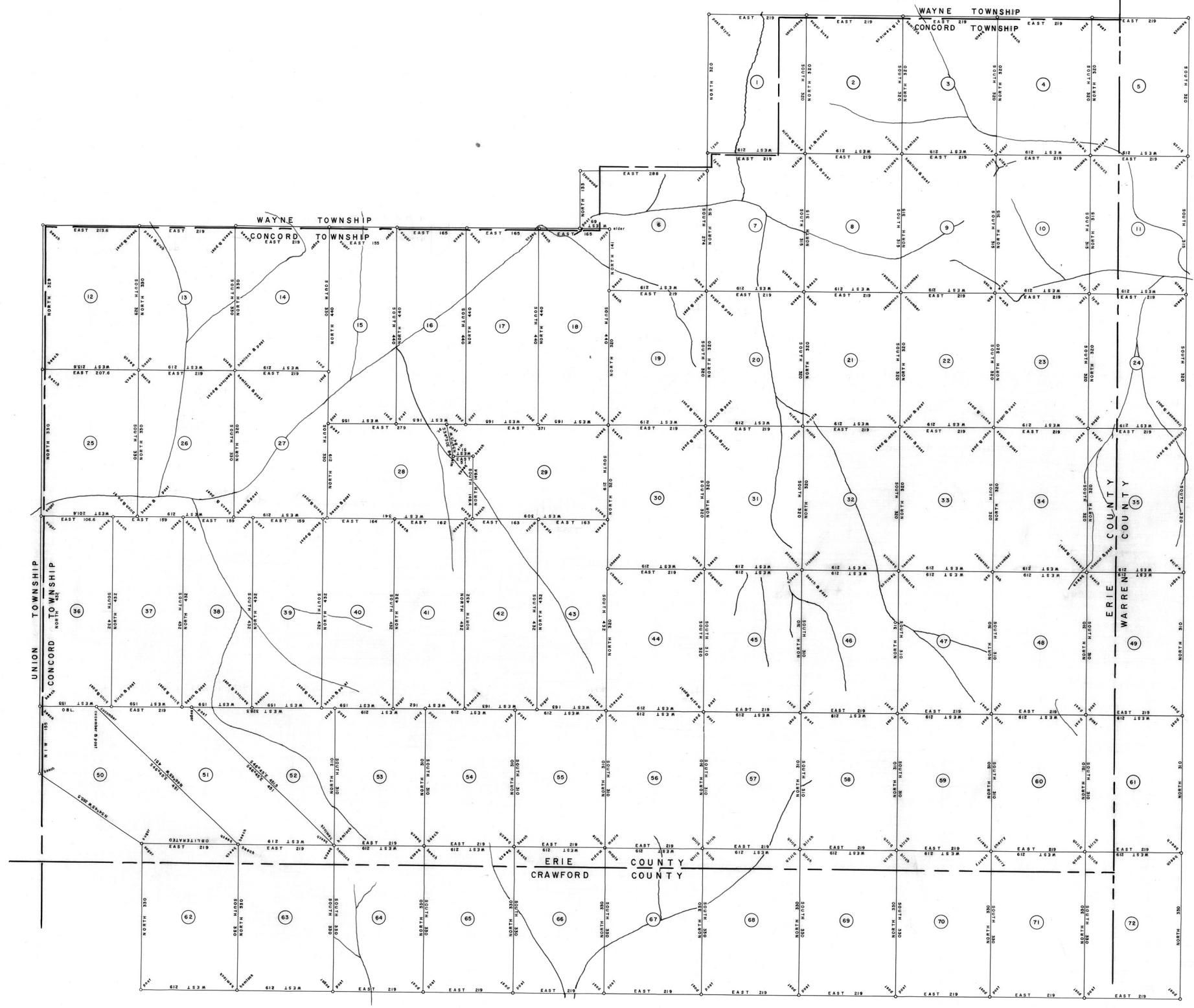


SCALE: 1" = 100'



1 A-150-271 CHARLES ABLE WARRANT APR 12/79 SURVEY OCT 12/79 PATENT JUNE 14/83 To-Wilhelm Willrich Etal H-31-512	2 A-150-279 SIMON ABLE WARRANT APR 12/79 SURVEY OCT 12/79 PATENT JUNE 14/83 To-Wilhelm Willrich Etal H-31-512	3 A-150-281 ANDREW BETZ WARRANT APR 12/79 SURVEY OCT 12/79 PATENT JUNE 14/83 To-Wilhelm Willrich Etal H-31-512	4 A-150-283 CONRAD BETZ WARRANT APR 12/79 SURVEY OCT 12/79 PATENT JUNE 14/83 To-Wilhelm Willrich Etal H-31-512	5 A-150-285 ELIUD BETZ WARRANT APR 12/79 SURVEY OCT 12/79 PATENT JUNE 14/83 To-Wilhelm Willrich Etal H-31-512	6 A-150-287 LOUIS REA WARRANT APR 12/79 SURVEY OCT 12/79 PATENT JUNE 14/83 To-Wilhelm Willrich Etal H-31-512	7 A-150-289 EUGEN ABLE WARRANT APR 12/79 SURVEY OCT 12/79 PATENT JUNE 14/83 To-Wilhelm Willrich Etal H-31-512	8 A-150-291 PETER ABLE WARRANT APR 12/79 SURVEY OCT 12/79 PATENT JUNE 14/83 To-Wilhelm Willrich Etal H-31-512	9 A-150-293 THOMAS BETZ WARRANT APR 12/79 SURVEY OCT 12/79 PATENT JUNE 14/83 To-Wilhelm Willrich Etal H-31-512	10 A-150-295 NIMROD BETZ WARRANT APR 12/79 SURVEY OCT 12/79 PATENT JUNE 14/83 To-Wilhelm Willrich Etal H-31-512	11 A-150-297 EDWARD BETZ WARRANT APR 12/79 SURVEY OCT 12/79 PATENT JUNE 14/83 To-Wilhelm Willrich Etal H-31-512	12 A-150-299 ISRAEL PIM WARRANT APR 12/79 SURVEY OCT 12/79 PATENT JUNE 14/83 To-Wilhelm Willrich Etal H-31-512	13 A-150-277 WALTER PIM WARRANT APR 12/79 SURVEY OCT 12/79 PATENT JUNE 14/83 To-Wilhelm Willrich Etal H-31-512	14 A-150-280 ROGER PIM WARRANT APR 12/79 SURVEY OCT 12/79 PATENT JUNE 14/83 To-Wilhelm Willrich Etal H-31-512	15 A-150-282 MATHEW PIM WARRANT APR 12/79 SURVEY OCT 12/79 PATENT JUNE 14/83 To-Wilhelm Willrich Etal H-31-512	16 A-150-284 ADRESA ABLE WARRANT APR 12/79 SURVEY OCT 12/79 PATENT JUNE 14/83 To-Wilhelm Willrich Etal H-31-512	17 A-150-286 SAMUEL REA JR WARRANT APR 12/79 SURVEY OCT 12/79 PATENT JUNE 14/83 To-Wilhelm Willrich Etal H-31-512	18 A-150-288 LOUIS REA WARRANT APR 12/79 SURVEY OCT 12/79 PATENT JUNE 14/83 To-Wilhelm Willrich Etal H-31-512	19 A-150-290 EDWARD ABLE WARRANT APR 12/79 SURVEY OCT 12/79 PATENT JUNE 14/83 To-Wilhelm Willrich Etal H-31-512	20 A-150-292 DANIEL ABLE WARRANT APR 12/79 SURVEY OCT 12/79 PATENT JUNE 14/83 To-Wilhelm Willrich Etal H-31-512	21 A-150-294 HANKAH REA WARRANT APR 12/79 SURVEY OCT 12/79 PATENT JUNE 14/83 To-Wilhelm Willrich Etal H-31-512	22 A-150-296 WILLIAM PATTERSON WARRANT APR 12/79 SURVEY OCT 12/79 PATENT JUNE 14/83 To-Wilhelm Willrich Etal H-31-512	23 A-150-298 ELIZA REA WARRANT APR 12/79 SURVEY OCT 12/79 PATENT JUNE 14/83 To-Wilhelm Willrich Etal H-31-512	24 A-150-300 PETER BETZ WARRANT APR 12/79 SURVEY OCT 12/79 PATENT JUNE 14/83 To-Wilhelm Willrich Etal H-31-512	25 A-150-302 WILLIAM BETZ WARRANT APR 12/79 SURVEY OCT 12/79 PATENT JUNE 14/83 To-Wilhelm Willrich Etal H-31-512	26 A-150-304 GEORGE PATTON WARRANT APR 12/79 SURVEY OCT 12/79 PATENT JUNE 14/83 To-Wilhelm Willrich Etal H-31-512	27 A-150-306 JAMES PATTON WARRANT APR 12/79 SURVEY OCT 12/79 PATENT JUNE 14/83 To-Wilhelm Willrich Etal H-31-512	28 A-150-308 JOHN RIDDLE WARRANT APR 12/79 SURVEY OCT 12/79 PATENT JUNE 14/83 To-Wilhelm Willrich Etal H-31-512	29 A-150-310 ROBERT PATTON WARRANT APR 12/79 SURVEY OCT 12/79 PATENT JUNE 14/83 To-Wilhelm Willrich Etal H-31-512	30 A-150-312 PHILIP RICE WARRANT APR 12/79 SURVEY OCT 12/79 PATENT JUNE 14/83 To-Wilhelm Willrich Etal H-31-512	31 C-193-21 JOHN RIDDLE JR WARRANT APR 12/79 SURVEY OCT 12/79 PATENT JUNE 14/83 To-Wilhelm Willrich Etal H-31-512	32 C-193-23 PETER RICHARDS WARRANT APR 12/79 SURVEY OCT 12/79 PATENT JUNE 14/83 To-Wilhelm Willrich Etal H-31-512	33 A-150-207 JOHN PIM WARRANT APR 12/79 SURVEY OCT 12/79 PATENT JUNE 14/83 To-Wilhelm Willrich Etal H-31-512	34 A-150-209 CHARLES PIM WARRANT APR 12/79 SURVEY OCT 12/79 PATENT JUNE 14/83 To-Wilhelm Willrich Etal H-31-512	35 A-150-211 THOMAS PIM WARRANT APR 12/79 SURVEY OCT 12/79 PATENT JUNE 14/83 To-Wilhelm Willrich Etal H-31-512	36 A-150-213 THOMAS PIM WARRANT APR 12/79 SURVEY OCT 12/79 PATENT JUNE 14/83 To-Wilhelm Willrich Etal H-31-512	37 A-150-215 LEWY PIM WARRANT APR 12/79 SURVEY OCT 12/79 PATENT JUNE 14/83 To-Wilhelm Willrich Etal H-31-512	38 A-150-217 JOHN PATTERSON WARRANT APR 12/79 SURVEY OCT 12/79 PATENT JUNE 14/83 To-Wilhelm Willrich Etal H-31-512	39 A-150-219 ROBERT PATTERSON WARRANT APR 12/79 SURVEY OCT 12/79 PATENT JUNE 14/83 To-Wilhelm Willrich Etal H-31-512	40 C-193-25 THOMAS PATTERSON WARRANT APR 12/79 SURVEY OCT 12/79 PATENT JUNE 14/83 To-Wilhelm Willrich Etal H-31-512	41 C-193-27 THOMAS PATTERSON WARRANT APR 12/79 SURVEY OCT 12/79 PATENT JUNE 14/83 To-Wilhelm Willrich Etal H-31-512	42 C-193-29 THOMAS PATTERSON WARRANT APR 12/79 SURVEY OCT 12/79 PATENT JUNE 14/83 To-Wilhelm Willrich Etal H-31-512	43 C-193-31 THOMAS PATTERSON WARRANT APR 12/79 SURVEY OCT 12/79 PATENT JUNE 14/83 To-Wilhelm Willrich Etal H-31-512	44 C-193-33 THOMAS PATTERSON WARRANT APR 12/79 SURVEY OCT 12/79 PATENT JUNE 14/83 To-Wilhelm Willrich Etal H-31-512	45 C-193-35 THOMAS PATTERSON WARRANT APR 12/79 SURVEY OCT 12/79 PATENT JUNE 14/83 To-Wilhelm Willrich Etal H-31-512	46 C-193-37 THOMAS PATTERSON WARRANT APR 12/79 SURVEY OCT 12/79 PATENT JUNE 14/83 To-Wilhelm Willrich Etal H-31-512	47 C-193-39 THOMAS PATTERSON WARRANT APR 12/79 SURVEY OCT 12/79 PATENT JUNE 14/83 To-Wilhelm Willrich Etal H-31-512	48 C-193-41 THOMAS PATTERSON WARRANT APR 12/79 SURVEY OCT 12/79 PATENT JUNE 14/83 To-Wilhelm Willrich Etal H-31-512	49 C-193-43 THOMAS PATTERSON WARRANT APR 12/79 SURVEY OCT 12/79 PATENT JUNE 14/83 To-Wilhelm Willrich Etal H-31-512	50 C-193-45 THOMAS PATTERSON WARRANT APR 12/79 SURVEY OCT 12/79 PATENT JUNE 14/83 To-Wilhelm Willrich Etal H-31-512	51 C-193-47 THOMAS PATTERSON WARRANT APR 12/79 SURVEY OCT 12/79 PATENT JUNE 14/83 To-Wilhelm Willrich Etal H-31-512	52 C-193-49 THOMAS PATTERSON WARRANT APR 12/79 SURVEY OCT 12/79 PATENT JUNE 14/83 To-Wilhelm Willrich Etal H-31-512	53 C-193-51 THOMAS PATTERSON WARRANT APR 12/79 SURVEY OCT 12/79 PATENT JUNE 14/83 To-Wilhelm Willrich Etal H-31-512	54 C-193-53 THOMAS PATTERSON WARRANT APR 12/79 SURVEY OCT 12/79 PATENT JUNE 14/83 To-Wilhelm Willrich Etal H-31-512	55 C-193-55 THOMAS PATTERSON WARRANT APR 12/79 SURVEY OCT 12/79 PATENT JUNE 14/83 To-Wilhelm Willrich Etal H-31-512	56 C-193-57 THOMAS PATTERSON WARRANT APR 12/79 SURVEY OCT 12/79 PATENT JUNE 14/83 To-Wilhelm Willrich Etal H-31-512	57 C-193-59 THOMAS PATTERSON WARRANT APR 12/79 SURVEY OCT 12/79 PATENT JUNE 14/83 To-Wilhelm Willrich Etal H-31-512	58 C-193-61 THOMAS PATTERSON WARRANT APR 12/79 SURVEY OCT 12/79 PATENT JUNE 14/83 To-Wilhelm Willrich Etal H-31-512	59 C-193-63 THOMAS PATTERSON WARRANT APR 12/79 SURVEY OCT 12/79 PATENT JUNE 14/83 To-Wilhelm Willrich Etal H-31-512	60 C-193-65 THOMAS PATTERSON WARRANT APR 12/79 SURVEY OCT 12/79 PATENT JUNE 14/83 To-Wilhelm Willrich Etal H-31-512	61 C-193-67 THOMAS PATTERSON WARRANT APR 12/79 SURVEY OCT 12/79 PATENT JUNE 14/83 To-Wilhelm Willrich Etal H-31-512	62 C-193-69 THOMAS PATTERSON WARRANT APR 12/79 SURVEY OCT 12/79 PATENT JUNE 14/83 To-Wilhelm Willrich Etal H-31-512	63 C-193-71 THOMAS PATTERSON WARRANT APR 12/79 SURVEY OCT 12/79 PATENT JUNE 14/83 To-Wilhelm Willrich Etal H-31-512	64 C-193-73 THOMAS PATTERSON WARRANT APR 12/79 SURVEY OCT 12/79 PATENT JUNE 14/83 To-Wilhelm Willrich Etal H-31-512	65 C-193-75 THOMAS PATTERSON WARRANT APR 12/79 SURVEY OCT 12/79 PATENT JUNE 14/83 To-Wilhelm Willrich Etal H-31-512	66 C-193-77 THOMAS PATTERSON WARRANT APR 12/79 SURVEY OCT 12/79 PATENT JUNE 14/83 To-Wilhelm Willrich Etal H-31-512	67 C-193-79 THOMAS PATTERSON WARRANT APR 12/79 SURVEY OCT 12/79 PATENT JUNE 14/83 To-Wilhelm Willrich Etal H-31-512	68 C-193-81 THOMAS PATTERSON WARRANT APR 12/79 SURVEY OCT 12/79 PATENT JUNE 14/83 To-Wilhelm Willrich Etal H-31-512	69 C-193-83 THOMAS PATTERSON WARRANT APR 12/79 SURVEY OCT 12/79 PATENT JUNE 14/83 To-Wilhelm Willrich Etal H-31-512	70 C-193-85 THOMAS PATTERSON WARRANT APR 12/79 SURVEY OCT 12/79 PATENT JUNE 14/83 To-Wilhelm Willrich Etal H-31-512	71 C-193-87 THOMAS PATTERSON WARRANT APR 12/79 SURVEY OCT 12/79 PATENT JUNE 14/83 To-Wilhelm Willrich Etal H-31-512	72 C-193-89 THOMAS PATTERSON WARRANT APR 12/79 SURVEY OCT 12/79 PATENT JUNE 14/83 To-Wilhelm Willrich Etal H-31-512
--	--	---	---	--	---	--	--	---	--	--	---	---	--	---	--	--	--	--	--	---	--	--	---	---	--	---	--	--	--	--	--	---	--	---	---	---	---	---	--	--	--	--	--	--	--	--	--	--	--	--	--	--	--	--	--	--	--	--	--	--	--	--	--	--	--	--	--	--	--	--	--

A CONNECTED WARRANTEE TOWNSHIP MAP of Concord Township in Erie County, Pennsylvania. The warrants, surveys, and patents bearing, respectively, the dates as shown set forth, are constructed from and have been compared with the original drafts on file in the Bureau of Land Records, Department of Community Affairs, Commonwealth of Pennsylvania, under the direction of Blair A. Griffith, Director.

IN TESTIMONY WHEREOF, I have hereunto set my hand and caused the seal of the said Department to be affixed at Harrisburg, Pennsylvania, this eighth day of November, A.D. one thousand nine hundred and sixty-eight.

[Signature]
Secretary of Community Affairs

