

SCALE 1" = 36.30 METERS

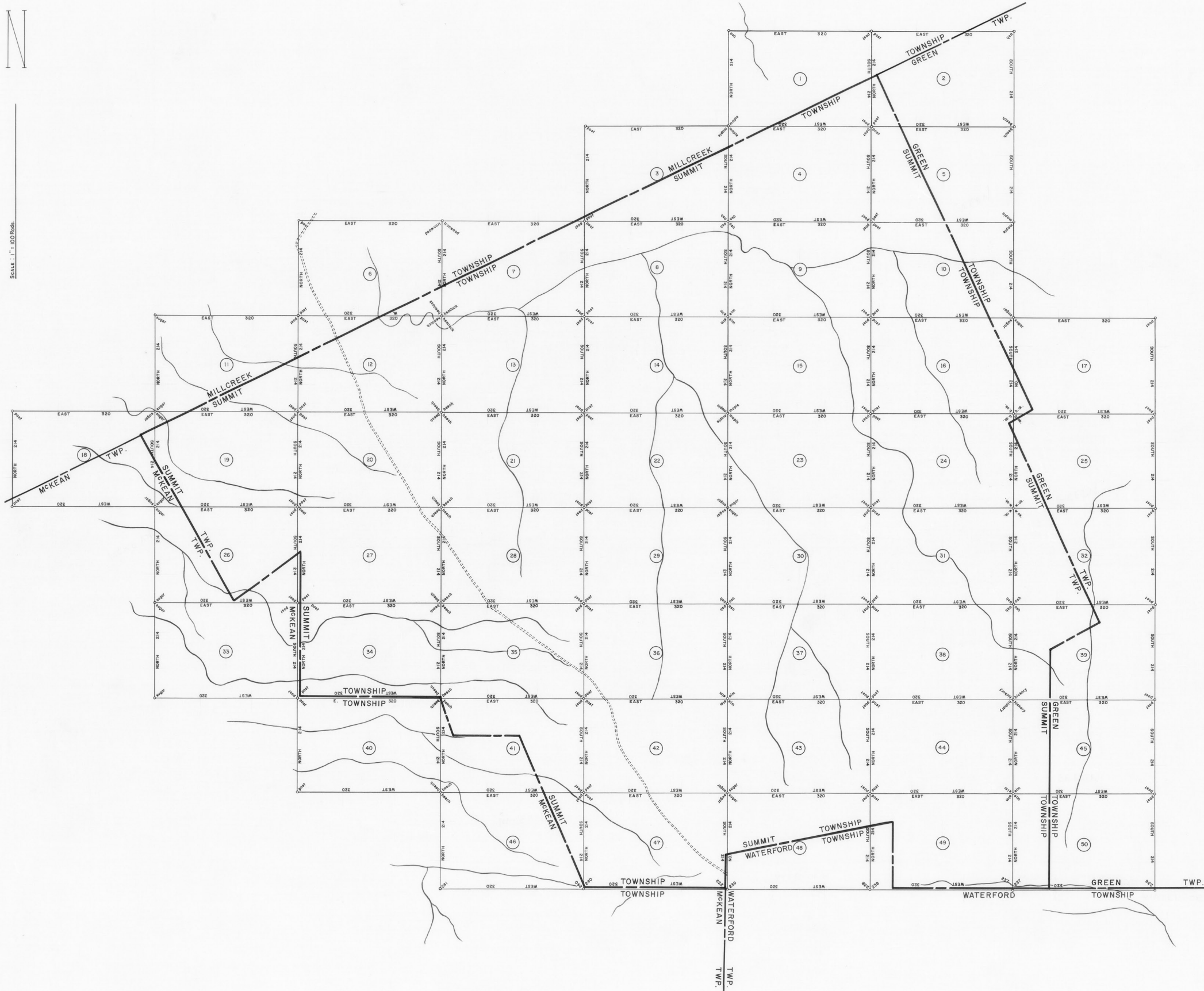


Table of land records with columns for section number, owner name, acreage, and dates of warrant, survey, and patent.

A CONNECTED WARRANTEE TOWNSHIP MAP of Summit Township, Erie County. The warrants, surveys, and patents bearing, respectively, the dates as above set forth, are constructed from and have been compared with the original drafts on file in the Bureau of Land Records, Department of Internal Affairs, Commonwealth of Pennsylvania, under the direction of Blair A. Griffith, Director.

IN TESTIMONY WHEREOF: I have hereunto set my hand and caused the seal of the said Department to be affixed at Harrisburg, Pennsylvania this thirteenth day of May A.D., one thousand nine hundred and sixty eight.

Blair A. Griffith, Secretary of Internal Affairs.

