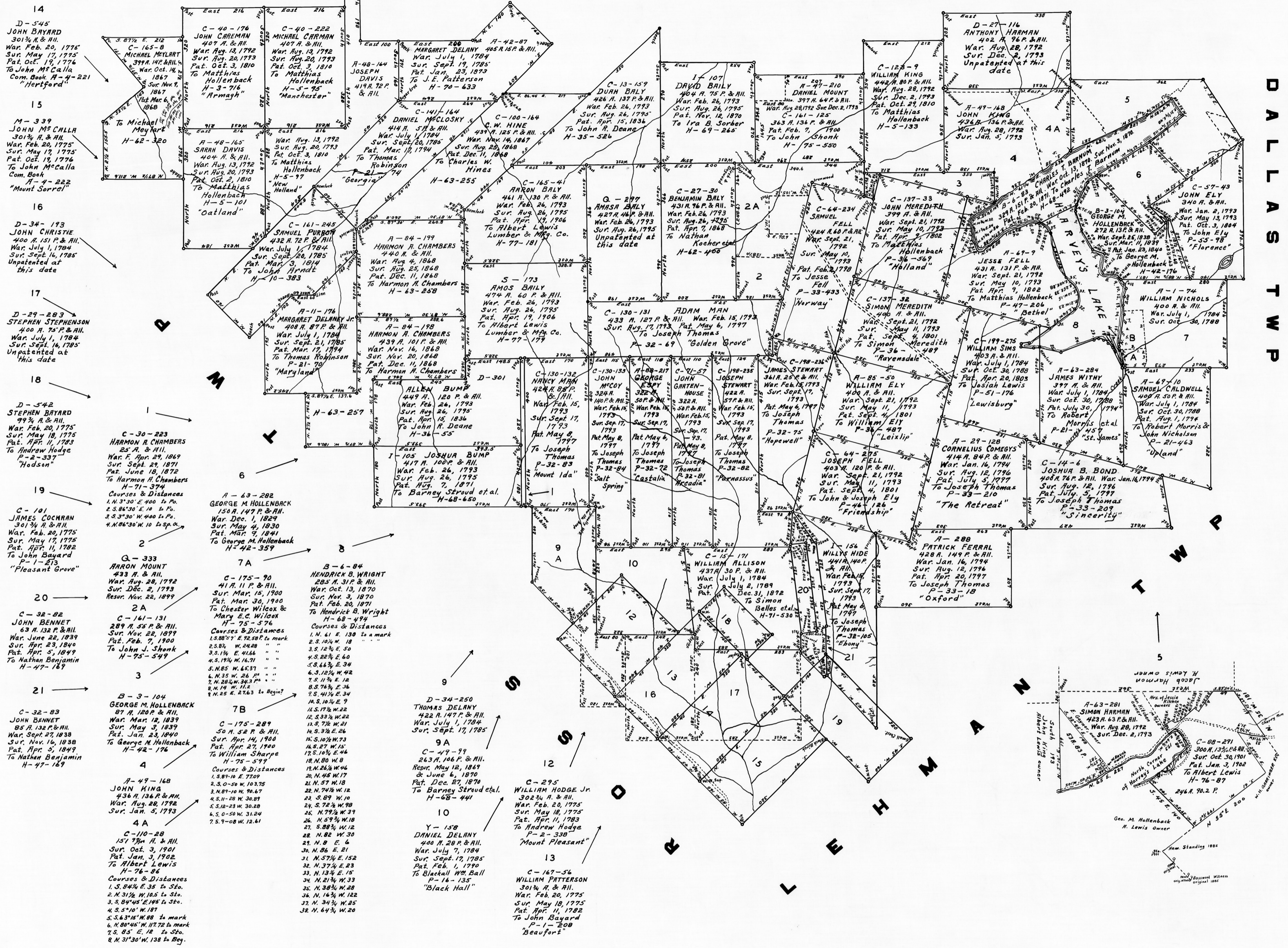


W Y O M I N G C O

DALLASTWP



LAKETWP

A CONNECTED WARRANTEE TOWNSHIP MAP: of Lake Township, Luzerne County. The Applications, Warrants, Surveys and Patents bearing dates respectively as above set forth, constructed from and compared with the original drafts remaining on file in the Department of Internal Affairs, of the Commonwealth of Pennsylvania; under the direction of Warren J. Daniel, Director of the Land Office.

IN TESTIMONY WHEREOF: I have hereunto set my hand and caused the seal of the said Department to be affixed at Harrisburg, Pennsylvania; this Seventeenth day of April, A.D. one thousand nine hundred and fifty.

William Stouffer
Secretary of Internal Affairs.