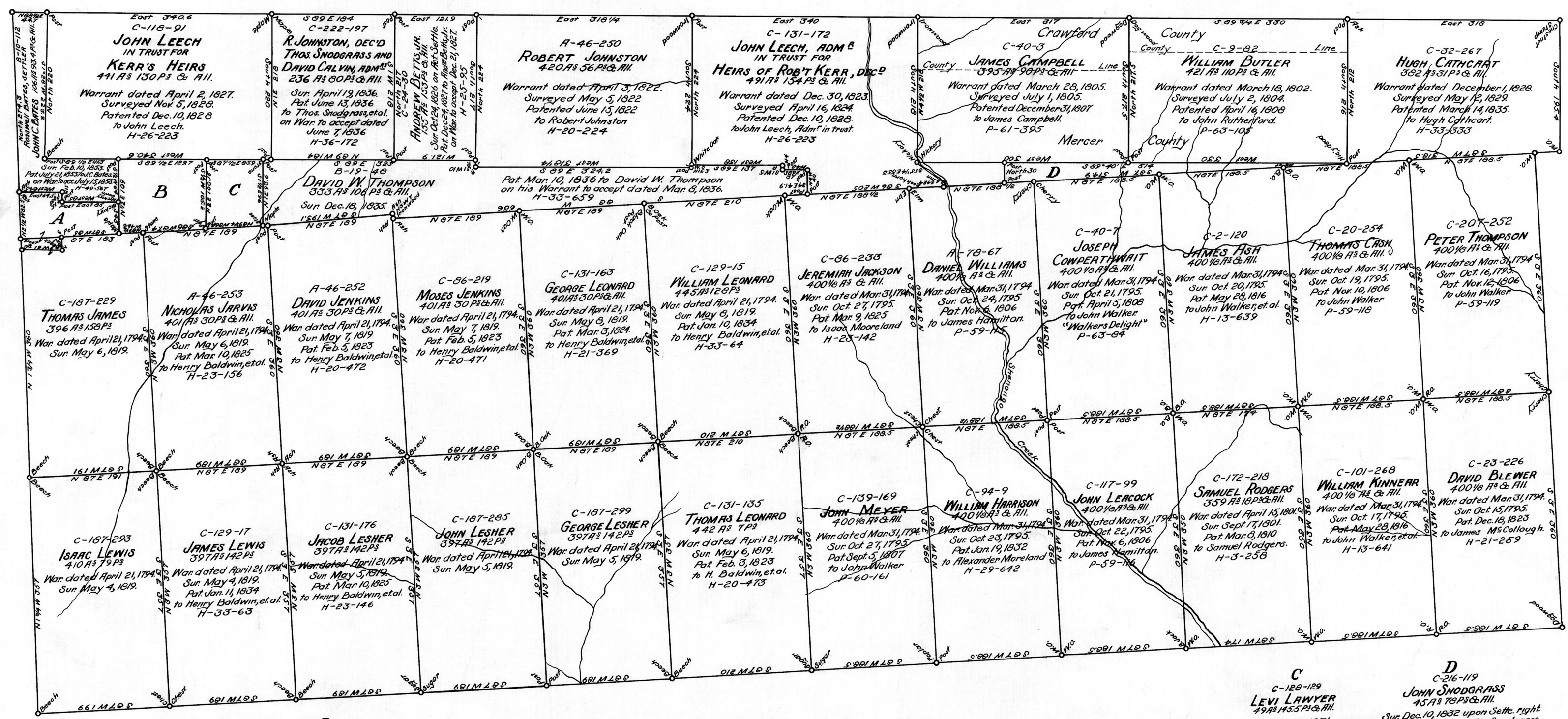


C R A W F O R D C O U N T Y

S T A T E O F O H I O

SUGAR GROVE TWP.



**A**  
C-220-26  
LEWIS SISLEY  
54 A'S 40 P'S & AIL.  
Sur. Nov. 4, 1828  
Pat. Dec. 13, 1828 to Lewis Sisley  
on War. to accept Dec. 13, 1828.  
H-26-231

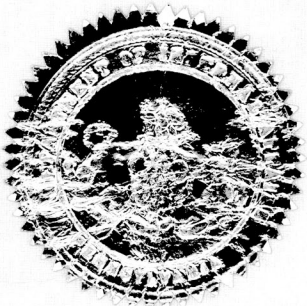
**B**  
C-17-263  
CHRISTIAN BATES  
32 A'S 63 P'S & AIL.  
Sur. Feb. 10, 1853.  
Pat. July 21, 1853 to Christian Bates  
on War. to accept July 15, 1853.  
H-49-568

**C**  
C-128-129  
LEVI LAWYER  
49 A'S 45 P'S & AIL.  
Sur. June 12, 1871.  
Pat. Feb. 7, 1873 to Rachel Lawyer  
on War. to accept Feb. 7, 1873.  
H-71-550

**D**  
C-216-119  
JOHN SNODGRASS  
45 A'S 76 P'S & AIL.  
Sur. Dec. 10, 1832 upon Settle. right  
Pat. Mar. 20, 1833 to John Snodgrass  
on War. to accept Mar. 18, 1833.  
H-31-402

WEST SALEM TWP.

GREENE TOWNSHIP



A Connected Draft of the tracts of land situated in Greene Township, Mercer County, The Warrants, Surveys, and Patents bearing dates respectively as above set forth, constructed from and compared with the original drafts remaining on file in the Department of Internal Affairs of Pennsylvania, under the direction of Warren J. Daniel, Director of the Land Office.  
In Testimony Whereof, I have hereunto set my hand and caused the seal of the said Department to be affixed at Harrisburg Pennsylvania, this second day of March, A.D. 1942.

*William S. Strong*  
Secretary of Internal Affairs