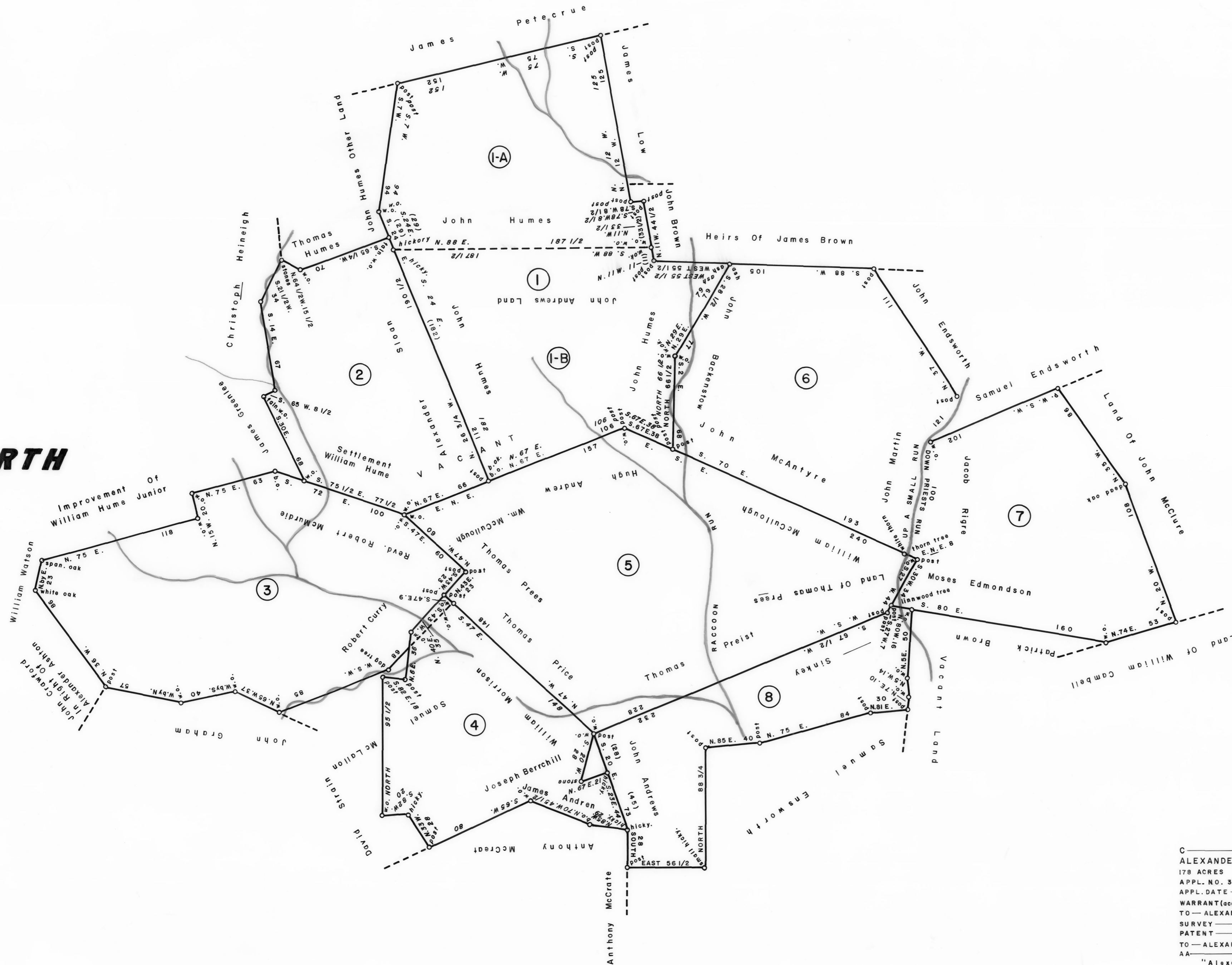


SCALE: 1" = 50 RODS

**ORTH**



①  
 B — 6 — 235  
 JOHN HUMES  
 298 ACRES-40 PERCHES & AII.  
 WARRANT — NOV. 2, 1744  
 SURVEY — APRIL 9, 1788  
 MASTER

①-A  
 A — 53 — 194  
 JOHN HUMES  
 139 ACRES-102 PERCHES & AII.  
 (PART OF LARGER TRACT)  
 WARRANT — NOV. 2, 1744  
 SURVEY — APRIL 9, 1788  
 UNPATENTED AT THIS DATE

①-B  
 C — 75 — 228  
 JOHN HUMES  
 158 ACRES-100 PERCHES & AII.  
 (PART OF LARGER TRACT)  
 WARRANT — NOV. 2, 1744  
 SURVEY — APRIL 9, 1788  
 TO — JOHN SLOAN  
 PATENT — JUNE 6, 1789  
 TO — JOHN ANDREW  
 P — 15 — 65  
 "St. Andrew"

②  
 C — 223 — 147, 148  
 ALEXANDER SLOAN  
 128 ACRES-31 PERCHES & AII.  
 APPL. NO. 682 (EAST SIDE)  
 APPL. DATE — AUG. 28, 1765  
 WARRANT (acc.) — AUG. 24, 1808  
 TO — JOHN SLOAN  
 SURVEY — NOV. 1, 1765  
 RE-SURVEY — APRIL 10, 1808  
 PATENT — AUG. 25, 1808  
 TO — JOHN SLOAN  
 P — 63 — 299  
 "Johnston"

③  
 C — 136 — 114  
 ALEXANDER MARTIN  
 178 ACRES & Allowance  
 APPL. NO. 314 (EAST SIDE)  
 APPL. DATE — AUG. 5, 1765  
 WARRANT (acc.) — AUG. 13, 1767  
 TO — ALEXANDER MARTIN  
 SURVEY — NOV. 4, 1765  
 PATENT — AUG. 15, 1767  
 TO — ALEXANDER MARTIN  
 AA — 10 — 67  
 "Alexander's Purchase"

③  
 A — 70 — 178  
 CHARLES BROWN  
 215 ACRES & Allowance  
 WARRANT — SEPT. 30, 1740  
 SURVEY — DEC. 10, 1740  
 VACATED AND A NEW WARRANT  
 ISSUED TO — ROBERT CORREY  
 WARRANT — SEPT. 25, 1745  
 PATENT — JAN. 9, 1745  
 TO — ROBERT CORREY  
 A — 13 — 28

④  
 C — 132 — 119  
 WILLIAM MAYBIN  
 147 ACRES & Allowance  
 WARRANT — FEB. 26, 1744  
 SURVEY — MARCH 1, 1745  
 PATENT — FEB. 16, 1763  
 TO — JACOB REIGHER  
 AA — 4 — 236

④  
 C — 207 — 9  
 JOHN STRAIN  
 102 ACRES-30 PERCHES & AII.  
 WARRANT — OCT. 25, 1749  
 SURVEY — APRIL 28, 1762  
 PATENT — JUNE 12, 1789  
 TO — JAMES CALDWELL  
 P — 15 — 71  
 "Dover"

⑤  
 D — 40 — 239  
 THOMAS BELL  
 105 ACRES-150 PERCHES & AII.  
 APPL. NO. 638 (EAST SIDE)  
 SURVEY — OCT. 5, 1765  
 UNPATENTED AT THIS DATE

⑤  
 C — 155 — 181  
 THOMAS PREES  
 265 ACRES & Allowance  
 WARRANT — SEPT. 12, 1737  
 SURVEY — NOV. 24, 1737  
 PATENT — OCT. 4, 1751  
 TO — THOMAS PREES  
 A — 16 — 57

**A CONNECTED DRAFT:** of ten (10) tracts of land, which when surveyed, were situate as follows: three (3) in East Hanover Township, Lancaster (now Dauphin or Lebanon) County; seven (7) in Hanover Township, Lancaster (now Dauphin or Lebanon) County. The Draft has been constructed from and compared with the original drafts on file in the Division of Land Records, Bureau of Archives And History, Historical And Museum Commission, Commonwealth Of Pennsylvania, under the direction of Edward D. Price, Chief.

**IN TESTIMONY WHEREOF:** I have hereunto set my hand and caused the seal of the said Commission to be affixed at Harrisburg, Pennsylvania, this thirty-first day of January, A. D. one thousand nine hundred and eighty-six.

LARRY E. TISE, Executive Director  
 Historical And Museum Commission

By: Harry E. Whipkey  
 HARRY E. WHIPKEY, Director, Bureau Of Archives And History

