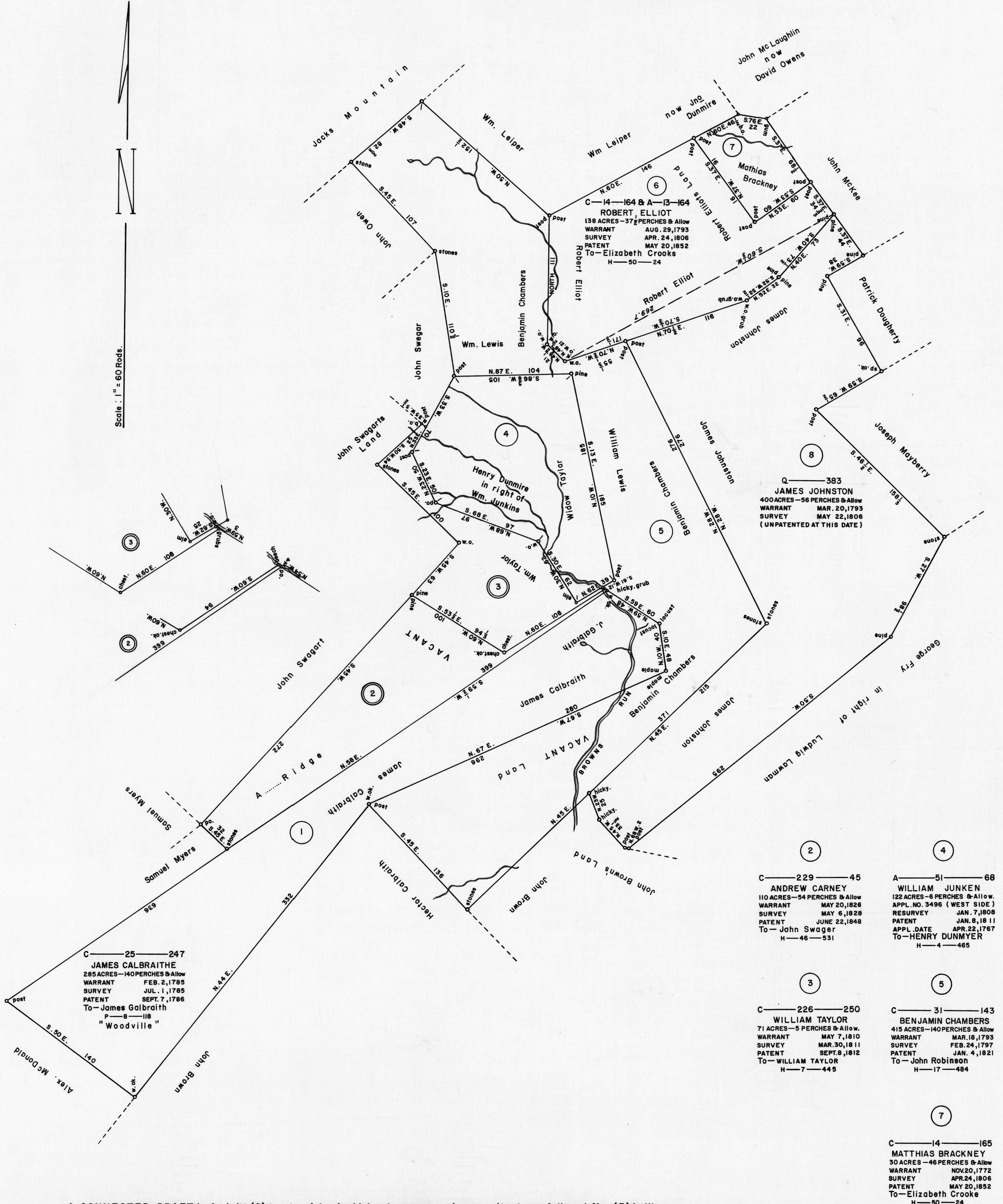


Scale: 1" = 60 Rods.



**A CONNECTED DRAFT** of eight (8) tracts of land which, when surveyed, were situate as follows: five (5) in Wayne Township and three (3) in Oliver Township, Mifflin County. The draft has been constructed from and compared with the original drafts on file in the Bureau of Land Records, Department of Community Affairs, Commonwealth of Pennsylvania, under the direction of James J. McFadden, Director.

**IN TESTIMONY WHEREOF**: I have hereunto set my hand and caused the seal of the said Department to be affixed at Harrisburg, Pennsylvania, this second day of July A.D., one thousand nine hundred and seventy.

JOSEPH W. BARR, JR.  
Secretary of Community Affairs

By: *Daniel Rogers*  
DANIEL ROGERS, Deputy Secretary

1602