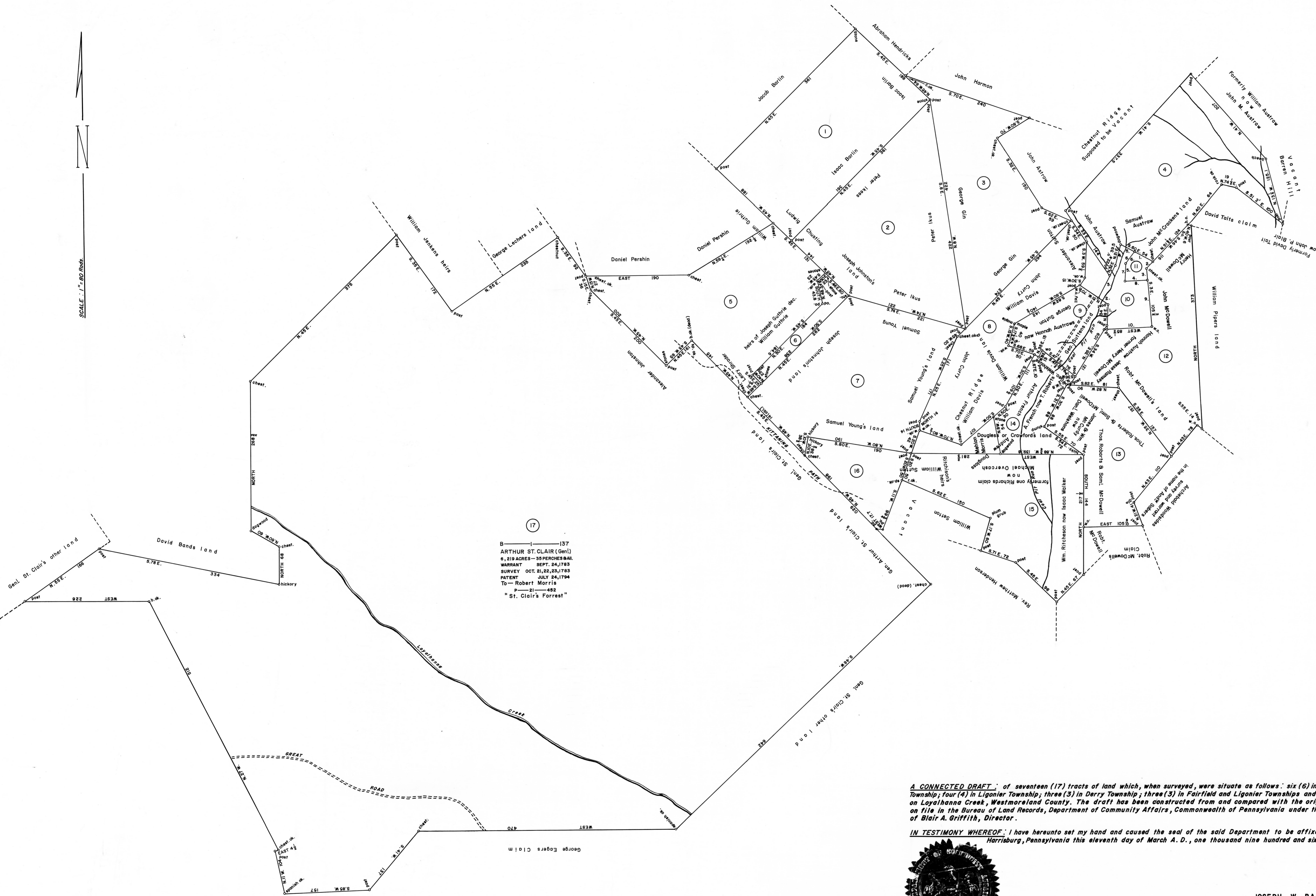


SCALE 1" = 50 Rods



17  
 B — 137  
 ARTHUR ST. CLAIR (Genl.)  
 6,219 ACRES—26 PERCHES & AIL  
 WARRANT SEPT. 24, 1783  
 SURVEY OCT. 21, 22, 23, 1783  
 PATENT JULY 24, 1784  
 To—Robert Morris  
 P—12—482  
 "St. Clair's Forest"

- |   |   |
|---|---|
| <p>1<br/>       C — 44 — 10<br/>       ISAAC BARLIN<br/>       404 ACRES—20 PERCHES &amp; AIL<br/>       WARRANT MAR 24, 1794<br/>       SURVEY JUNE 4, 1795<br/>       PATENT JUNE 17, 1870<br/>       To—Johna Saxo et al.<br/>       H—67—398</p>                                    | <p>2<br/>       C — 80 — 236<br/>       PETER IKUS<br/>       404 ACRES—26 PERCHES &amp; AIL<br/>       WARRANT MAR 22, 1794<br/>       SURVEY JUNE 3, 1795<br/>       PATENT JUNE 3, 1870<br/>       To—John Norris<br/>       H—67—151</p>                                  |
| <p>3<br/>       C — 81 — 95<br/>       GEORGE GIN<br/>       330 ACRES—167 PERCHES &amp; AIL<br/>       WARRANT MAR 24, 1794<br/>       SURVEY JUNE 3, 1795<br/>       PATENT JULY 10, 1889<br/>       To—Mary A. Glasgow et al.<br/>       H—74—726</p>                                | <p>4<br/>       C — 4 — 136<br/>       WILLIAM AUSTROW<br/>       399 ACRES—112 PERCHES &amp; AIL<br/>       WARRANT MAY 10, 1793<br/>       SURVEY APR. 11, 1838<br/>       PATENT FEB. 13, 1839<br/>       To—WILLIAM AUSTROW<br/>       H—40—350</p>                       |
| <p>5<br/>       C — 63 — 134<br/>       JAMES GUTHRIE<br/>       404 ACRES—26 PERCHES &amp; AIL<br/>       WARRANT APR. 6, 1826<br/>       SURVEY JUNE 1, 1826<br/>       PATENT FEB—1827<br/>       To—JAMES GUTHRIE<br/>       H—24—168</p>   | <p>6<br/>       C — 110 — 113<br/>       JOHN L. KLINE (adm.)<br/>       404 ACRES—26 PERCHES &amp; AIL<br/>       WARRANT SEPT. 1, 1880<br/>       SURVEY SEPT. 1, 1890<br/>       PATENT MAR 24, 1911<br/>       To—JOHN L. KLINE (adm.)<br/>       H—75—32</p>             |
| <p>7<br/>       A — 35 — 114<br/>       SAMUEL YOUNG<br/>       403 ACRES &amp; Allowance<br/>       WARRANT MAY 10, 1793<br/>       SURVEY (No date given)<br/>       PATENT JAN. 24, 1797<br/>       To—William Debn<br/>       H—31—225<br/>       "Hopewell"</p>                    | <p>8<br/>       C — 46 — 149<br/>       WILLIAM DAVIS<br/>       256 ACRES—87 PERCHES &amp; AIL<br/>       WARRANT MAR 22, 1794<br/>       SURVEY JUNE 6, 1795<br/>       PATENT APR. 29, 1804<br/>       To—Charles Barrington<br/>       H—54—187<br/>       "Yarmouth"</p> |
| <p>9<br/>       C — 219 — 249<br/>       GEORGE SUTTON<br/>       100 ACRES &amp; Allowance<br/>       WARRANT AUG. 30, 1785<br/>       SURVEY MAR. 16, 1866<br/>       PATENT MAR. 15, 1866<br/>       To—Hannah Austrow (widow)<br/>       H—61—183</p>                               | <p>10<br/>       C — 146 — 115<br/>       WILLIAM MCDOWELL<br/>       48 ACRES—148 PERCHES &amp; AIL<br/>       WARRANT DEC. 12, 1837<br/>       SURVEY JAN. 11, 1838<br/>       PATENT MAY 17, 1839<br/>       To—WILLIAM MCDOWELL<br/>       H—41—83</p>                    |
| <p>11<br/>       C — 15 — 233<br/>       JOHN F. AUSTRAW<br/>       9 ACRES—17 PERCHES &amp; Allow<br/>       WARRANT APR. 26, 1808<br/>       SURVEY JUNE 25, 1808<br/>       PATENT JULY 7, 1870<br/>       To—JOHN F. AUSTRAW<br/>       H—86—651</p>                                | <p>12<br/>       C — 155 — 64<br/>       ROBERT MCDOWELL<br/>       276 ACRES—126 PERCHES &amp; AIL<br/>       WARRANT AUG. 17, 1786<br/>       SURVEY MAY 27, 1788<br/>       PATENT DEC. 15, 1837<br/>       To—Henry, John &amp; Robt. McDowell<br/>       H—38—350</p>    |
| <p>13<br/>       C — 189 — 68<br/>       THOMAS ROBERTS (wid.)<br/>       205 ACRES &amp; Allowance<br/>       WARRANT AUG. 25, 1786<br/>       SURVEY MAY 5, 1823<br/>       PATENT FEB. 25, 1824<br/>       To—Samuel McDowell<br/>       H—21—386</p>                                | <p>14<br/>       C — 57 — 178<br/>       ARTHUR FRENCH<br/>       88 ACRES—37 PERCHES &amp; AIL<br/>       WARRANT AUG. 30, 1785<br/>       SURVEY NOV. 3, 1841<br/>       PATENT APR. 6, 1870<br/>       To—Daniel Welshous<br/>       H—84—623</p>                          |
| <p>15<br/>       D — 33 — 104<br/>       ISAAC WALKER<br/>       281 ACRES—123 PERCHES &amp; AIL<br/>       WARRANT SEPT. 4, 1789<br/>       SURVEY OCT. 16, 1787<br/>       PATENT FEB. 11, 1814<br/>       To—John Mc-Kown et. ux.<br/>       H—10—272<br/>       "Spring Garden"</p> | <p>16<br/>       C — 221 — 147<br/>       WILLIAM SAYTON<br/>       108 ACRES—146 PERCHES &amp; AIL<br/>       WARRANT JULY 18, 1793<br/>       SURVEY SEPT. 16, 1793<br/>       PATENT MAY 13, 1870<br/>       To—Lewis Shoups<br/>       H—66—236</p>                       |

A CONNECTED DRAFT of seventeen (17) tracts of land which, when surveyed, were situate as follows: six (6) in Fairfield Township; four (4) in Ligonier Township; three (3) in Derry Township; three (3) in Fairfield and Ligonier Townships and one (1) on Loyalhanna Creek, Westmoreland County. The draft has been constructed from and compared with the original drafts on file in the Bureau of Land Records, Department of Community Affairs, Commonwealth of Pennsylvania under the direction of Blair A. Griffith, Director.

IN TESTIMONY WHEREOF: I have hereunto set my hand and caused the seal of the said Department to be affixed at Harrisburg, Pennsylvania this eleventh day of March A. D., one thousand nine hundred and sixty nine.



JOSEPH W. BARR, JR.  
 Secretary of Community Affairs

By: *Daniel Rogers*  
 DANIEL ROGERS, Deputy Secretary

- Note—COURSES and DISTANCES for:
- |   |   |
|---|---|
| <p>10<br/>       BEGINNING AT POST<br/>       1. N. 20 E. 45 to Dogwood<br/>       2. N. 44 W. 25.7 to W. Oak<br/>       3. N. 31 E. 80.7 to W. Oak<br/>       4. N. 2 1/2 E. 39.5 to Dogwood<br/>       5. S. 60 E. 27.8 to Post<br/>       6. S. 37 W. 28 to W. Oak<br/>       7. S. 11 W. 31 to Red Oak<br/>       8. EAST 40 to Post<br/>       9. S. 1 1/2 E. 85.2 to Post<br/>       10. N. 88 1/2 W. 87 to RED. POST</p> | <p>11<br/>       BEGINNING AT POST<br/>       1. S. 59 E. 36 to Stone<br/>       2. S. 96 W. 15.6 to Shump<br/>       3. S. 1 1/2 E. 24 1/2 to Post<br/>       4. N. 88 1/2 W. 40 to Ch. Oak<br/>       5. N. 11 E. 30 to W. Oak<br/>       6. N. 38 E. 26 to WEG. POST</p> |
|---|---|

1779