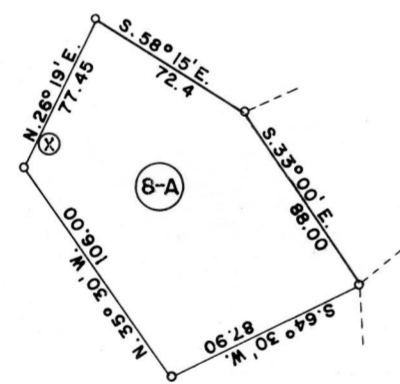
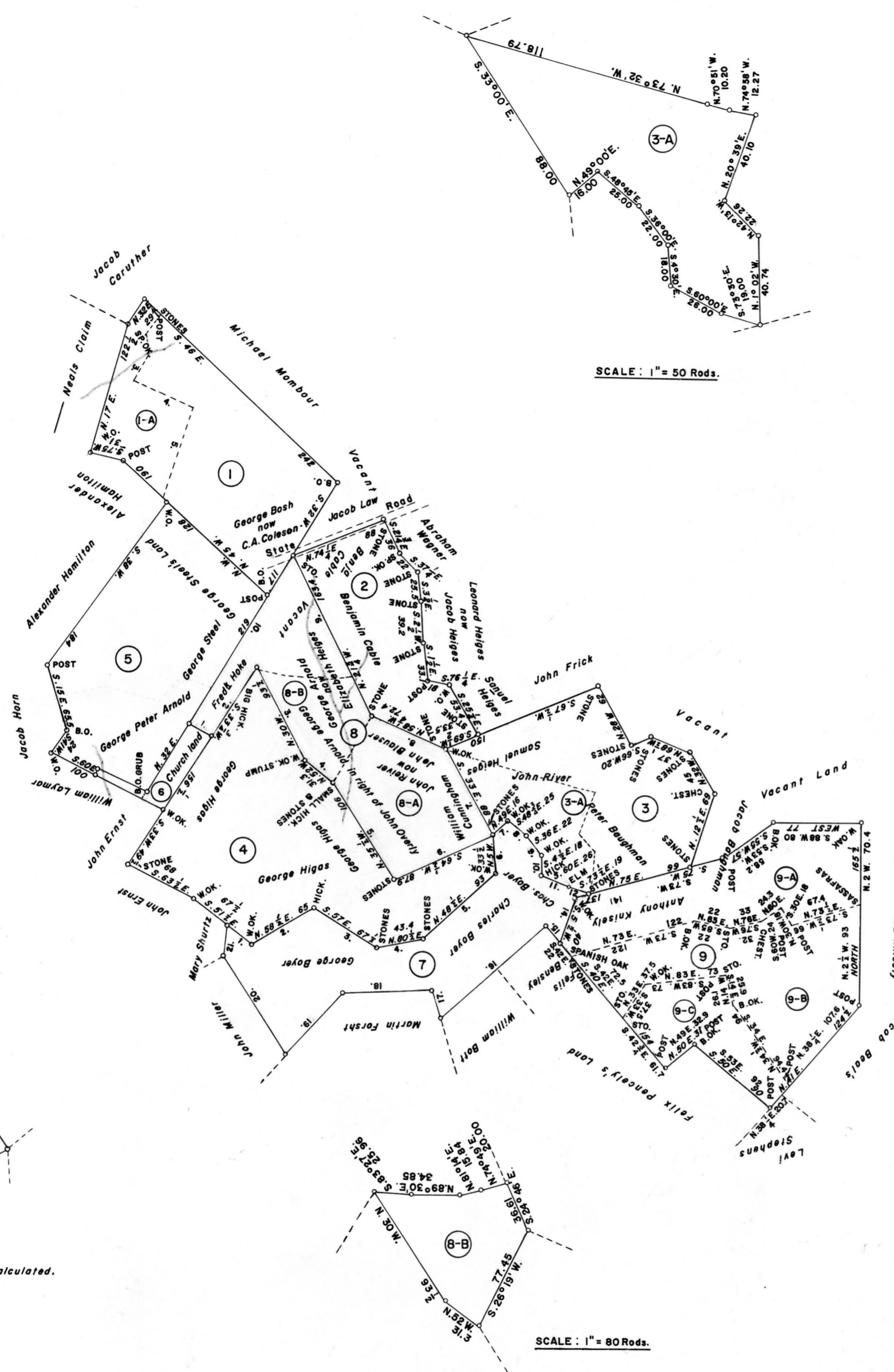


SCALE: 1" = 100 Rods.



SCALE: 1" = 80 Rods.

⊗ Bearing and Distance Calculated.



SCALE: 1" = 80 Rods.

**A CONNECTED DRAFT:** of sixteen (16) tracts of land in York County, which, when surveyed, were situate as follows: nine (9) in Franklin Township; one (1) in Franklin and Washington (formerly Warrington and Monaghan) Townships; three (3) in Washington (formerly Monaghan and Warrington) Township; and three (3) in Monaghan Township. The draft has been constructed and compared with the original drafts on file in the Bureau of Land Records, Department of Internal Affairs, of the Commonwealth of Pennsylvania, under the direction of Anthony G. Reese, Director.

**IN TESTIMONY WHEREOF:** I have hereunto set my hand and caused the seal of the said Department to be affixed at Harrisburg, Pennsylvania this tenth day of January A.D., one thousand nine hundred and sixty-three.

GENEVIEVE BLATT  
Secretary of Internal Affairs.

By: *William C. Seyler*  
WILLIAM C. SEYLER, Deputy Secretary.

1  
H—401  
NICHOLAS SHADS  
139 Acres—40 Perches & Allow.  
Warrant July 9, 1763  
Survey Oct. 23, 1765

(-A)  
C—2—127  
37 Acres—132 Perches & Allow.  
(Part of 139 As.—40 Ps. All.)  
Resurvey Dec. 13-14, 1814  
Patent Dec. 5, 1815  
To—Lawrence Hickes  
H—11—444  
Courses and Distances  
(Beginning at Chestnut)  
1. S. 52 E. 26.6 to W. Oak  
2. N. 57 E. 65 1/2 to Hickory  
3. S. 57 E. 66.6 to Stones  
4. N. 80 E. 43 1/2 to Stones  
5. N. 48 E. 94 to W. Oak  
6. N. 5 W. 33.3 to Stones  
7. N. 48 E. 17.2 to W. Oak  
8. S. 50 E. 24 to W. Oak  
9. S. 37 E. 23 to W. Oak  
10. S. 5 1/2 E. 19 to Hickory  
11. S. 61 E. 27 to Elm  
12. S. 75 E. 19 to Stones  
13. S. 73 W. 15 to W. Oak  
14. S. 23 W. 40 to Dead Sp. Ok.  
15. N. 42 W. 22 to Stones  
16. S. 48 W. 123 1/2 to Stones  
17. N. 18 W. 28 to Sp. Ok.  
18. S. 88 W. 82 to B. O.  
19. S. 43 W. 72 to W. Oak  
20. N. 33 W. 100.6 to Stones  
21. N. 5 E. 26 to Begin.

2  
C—72—91  
MOSES EVANS  
93 Acres—43 Perches & Allow.  
Warrant June 27, 1878  
Survey July 25, 1878  
Patent Oct. 18, 1878  
To—Moses Evans  
H—74—139

3  
D—61—16  
DIETRICK KEYSER  
162 Acres—110 Perches & Allow.  
Warrant Mar. 31, 1775  
Survey Dec. 7, 1827  
(Unpatented at this date)

4  
D—59—117  
GEORGE HICKIS  
211 Acres—25 Perches & Allow.  
Appl. No. 4750 (W. S.)  
Appl. date Feb. 10, 1768  
Survey Sept. 18, 1828  
(Unpatented at this date)

5  
A—34—210  
PETER GALLAKER  
185 Acres & Allowance  
Warrant Oct. 16, 1750  
Survey Oct. 24, 1765  
(Unpatented at this date)

6  
C—71—297  
GEORGE HIGAS (in trust)  
10 Acres—153 Perches & Allow.  
Warrant Dec. 9, 1794  
Survey Feb. 27, 1795  
Patent Mar. 26, 1822  
To—German Lutheran and  
Presbyterian Congregation  
H—20—31  
Courses and Distances:  
(Beginning at Hickory)  
1. S. 62 E. 22 1/2 to W. Ok.  
2. S. 33 W. 77 1/2 to W. Ok.  
3. N. 65 W. 69 to Post  
4. N. 12 E. 5 1/2 to Post  
5. S. 64 1/2 E. 82 1/2 to Post  
6. N. 30 E. 75 to Begin.

C—35—129  
49 Acres & Allowance  
(Part of 263 As.—112 Ps.)  
Resurvey Mar. 25, 1816  
Patent Apr. 25, 1816  
To—Abraham Kneislley  
H—13—497

7  
B—5—86  
CHARLES BYARS  
132 Acres—135 Perches & Allow.  
Appl. No. 4934 (W. S.)  
Survey Apr. 29, 1796  
Patent May 16, 1810  
On Warrant to Accept:  
dated April 30, 1810  
To—John Bayer  
H—2—431

Called—"Harmony"  
Courses and Distances  
(Beginning at Chestnut)  
1. S. 52 E. 26.6 to W. Oak  
2. N. 57 E. 65 1/2 to Hickory  
3. S. 57 E. 66.6 to Stones  
4. N. 80 E. 43 1/2 to Stones  
5. N. 48 E. 94 to W. Oak  
6. N. 5 W. 33.3 to Stones  
7. N. 48 E. 17.2 to W. Oak  
8. S. 50 E. 24 to W. Oak  
9. S. 37 E. 23 to W. Oak  
10. S. 5 1/2 E. 19 to Hickory  
11. S. 61 E. 27 to Elm  
12. S. 75 E. 19 to Stones  
13. S. 73 W. 15 to W. Oak  
14. S. 23 W. 40 to Dead Sp. Ok.  
15. N. 42 W. 22 to Stones  
16. S. 48 W. 123 1/2 to Stones  
17. N. 18 W. 28 to Sp. Ok.  
18. S. 88 W. 82 to B. O.  
19. S. 43 W. 72 to W. Oak  
20. N. 33 W. 100.6 to Stones  
21. N. 5 E. 26 to Begin.

8  
A—24—53  
JOHN OVERLY  
151 Acres—149 Perches & Allow.  
Appl. No. 4805 (W. S.)  
Appl. date Mar. 7, 1768  
Survey Mar.—1768  
(Unpatented at this date)  
Courses and Distances  
(Beginning at Hickory.)  
1. S. 60 E. 20 to W. Ok.  
2. N. 35 E. 75 to Hickory  
3. S. 27 E. 93 to W. Ok.  
4. S. 30 E. 32 to Hickory  
5. S. 33 E. 104 to Hickory  
6. N. 66 E. 97 1/2 to Stone  
7. N. 29 W. 90 to W. O.  
8. N. 59 W. 91 to W. O.  
9. N. 23 W. 139 1/2 to W. O.  
10. S. 32 W. 182 to Begin.

9  
S—59  
WILLIAM BUTTNER  
263 Acres—112 Perches & Allow.  
Warrant Apr. 30, 1765  
Survey Aug. 29, 1765

9-A  
B—10—128  
101 Acres—18 Perches & Allow.  
(Part of 263 As.—112 Ps.)  
Resurvey July 7, 1838  
Patent May 9, 1839  
To—Daniel Hershey, John  
Anthony and Joseph Hershey  
H—41—57

9-B  
C—23—14  
126 Acres—52 Perches & Allow.  
(Part of 263 As.—112 Ps.)  
Resurvey June 26, 1821  
Patent July 17, 1821  
To—David Pentz  
H—19—91

9-C  
C—35—129  
49 Acres & Allowance  
(Part of 263 As.—112 Ps.)  
Resurvey Mar. 25, 1816  
Patent Apr. 25, 1816  
To—Abraham Kneislley  
H—13—497