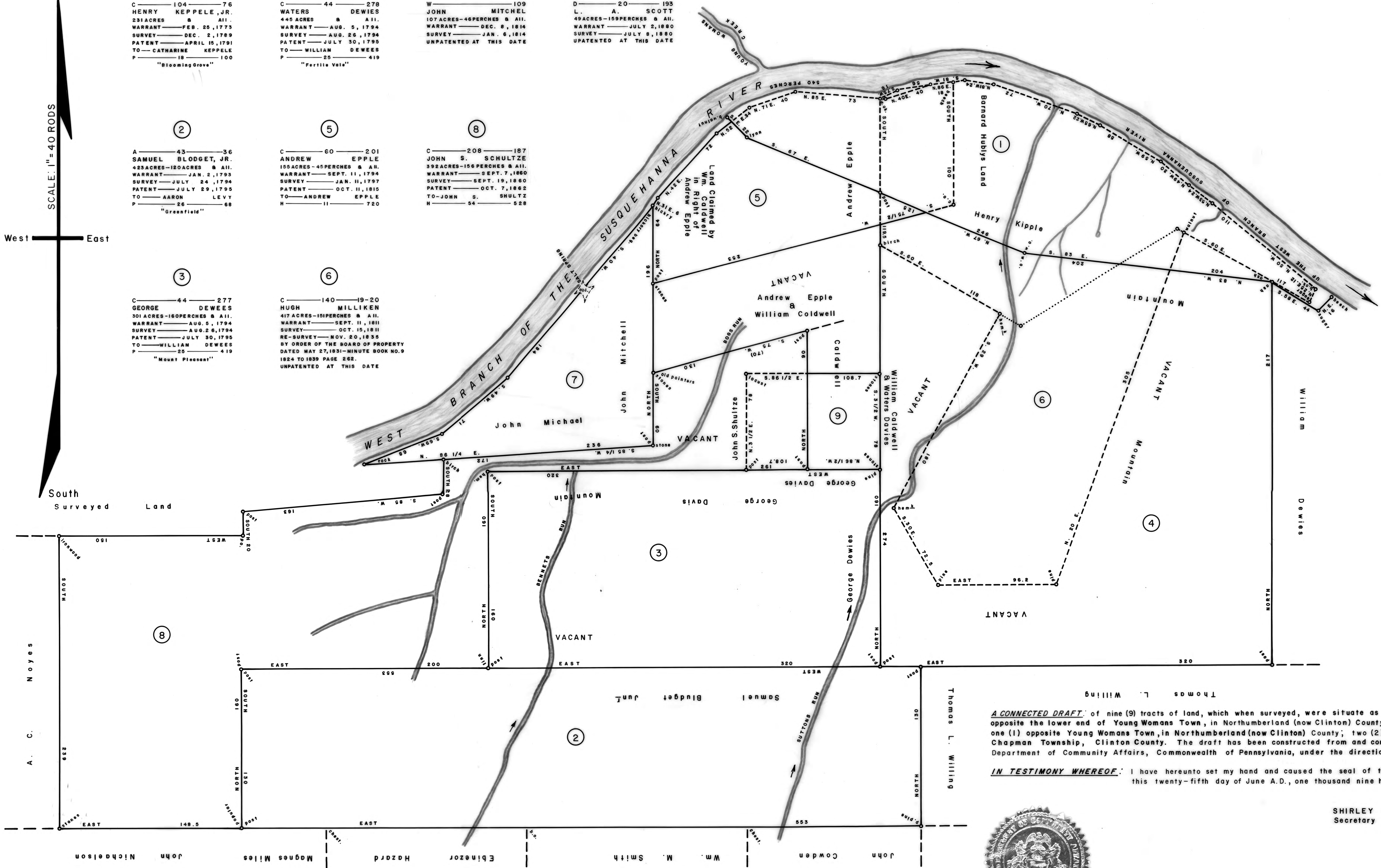


North
 West East
 South
 SCALE: 1" = 40 RODS

- | | | | |
|--------------------------------------------------------------------------------------------------------------------------------------------------------------------------------------------------------------------------------------------------------------------------------------------------|-------------------------------------------------------------------------------------------------------------------------------------------------------------------------------------------------------------------------------------------------------------------------------------------------------------------------------------------------------------------------------------------------|-------------------------------------------------------------------------------------------------------------------------------------------------------------------------------------------------------------------------------------------------------------------------|--------------------------------------------------------------------------------------------------------------------------------------------------------------------------------------------------------------|
| <p>①
 C—104—76
 HENRY KEPPELE, JR.
 231 ACRES & AII.
 WARRANT—FEB. 25, 1775
 SURVEY—DEC. 2, 1789
 PATENT—APRIL 15, 1791
 TO—CATHARINE KEPPELE
 P—19—100
 "Blooming Grove"</p> | <p>④
 C—44—278
 WATERS DEWIES
 445 ACRES & AII.
 WARRANT—AUG. 5, 1794
 SURVEY—AUG. 26, 1794
 PATENT—JULY 30, 1795
 TO—WILLIAM DEWIES
 P—25—419
 "Fertile Vale"</p> | <p>⑦
 W—109
 JOHN MITCHELL
 107 ACRES—46 PERCHES & AII.
 WARRANT—DEC. 8, 1814
 SURVEY—JAN. 6, 1814
 UNPATENTED AT THIS DATE</p> | <p>⑨
 D—20—193
 L. A. SCOTT
 49 ACRES—159 PERCHES & AII.
 WARRANT—JULY 2, 1880
 SURVEY—JULY 8, 1880
 UNPATENTED AT THIS DATE</p> |
| <p>②
 A—43—36
 SAMUEL BLODGET, JR.
 425 ACRES—120 ACRES & AII.
 WARRANT—JAN. 2, 1795
 SURVEY—JULY 24, 1794
 PATENT—JULY 29, 1795
 TO—AARON LEVY
 P—26—58
 "Greenfield"</p> | <p>⑤
 C—60—201
 ANDREW EPPLE
 155 ACRES—45 PERCHES & AII.
 WARRANT—SEPT. 11, 1794
 SURVEY—JAN. 11, 1797
 PATENT—OCT. 11, 1815
 TO—ANDREW EPPLE
 H—11—720</p> | <p>⑧
 C—208—187
 JOHN S. SCHULTZ
 392 ACRES—156 PERCHES & AII.
 WARRANT—SEPT. 7, 1860
 SURVEY—SEPT. 19, 1860
 PATENT—OCT. 7, 1862
 TO—JOHN S. SCHULTZ
 H—34—528</p> | |
| <p>③
 C—44—277
 GEORGE DEWIES
 301 ACRES—160 PERCHES & AII.
 WARRANT—AUG. 5, 1794
 SURVEY—AUG. 26, 1794
 PATENT—JULY 30, 1795
 TO—WILLIAM DEWIES
 P—25—419
 "Mount Pleasant"</p> | <p>⑥
 C—140—19-20
 HUGH MILLIKEN
 417 ACRES—151 PERCHES & AII.
 WARRANT—SEPT. 11, 1811
 SURVEY—OCT. 15, 1811
 RE-SURVEY—NOV. 20, 1835
 BY ORDER OF THE BOARD OF PROPERTY
 DATED MAY 27, 1831—MINUTE BOOK NO. 9
 1824 TO 1839 PAGE 262.
 UNPATENTED AT THIS DATE</p> | | |



A CONNECTED DRAFT of nine (9) tracts of land, which when surveyed, were situate as follows: one (1) 23 miles above the mouth of Bald Eagle Creek and opposite the lower end of Young Womans Town, in Northumberland (now Clinton) County; three (3) in Bald Eagle Township, Northumberland (now Clinton) County; one (1) opposite Young Womans Town, in Northumberland (now Clinton) County; two (2) in Bald Eagle Township, Centre (now Clinton) County; two (2) in Chapman Township, Clinton County. The draft has been constructed from and compared with the original drafts on file in the Bureau of Land Records, Department of Community Affairs, Commonwealth of Pennsylvania, under the direction of Edward D. Price, Director.

IN TESTIMONY WHEREOF: I have hereunto set my hand and caused the seal of the said Department to be affixed at Harrisburg, Pennsylvania, this twenty-fifth day of June A.D., one thousand nine hundred and eighty.



SHIRLEY M. DENNIS
 Secretary of Community Affairs

By: *William A. Hawkins*
 WILLIAM A. HAWKINS, Executive Deputy Secretary