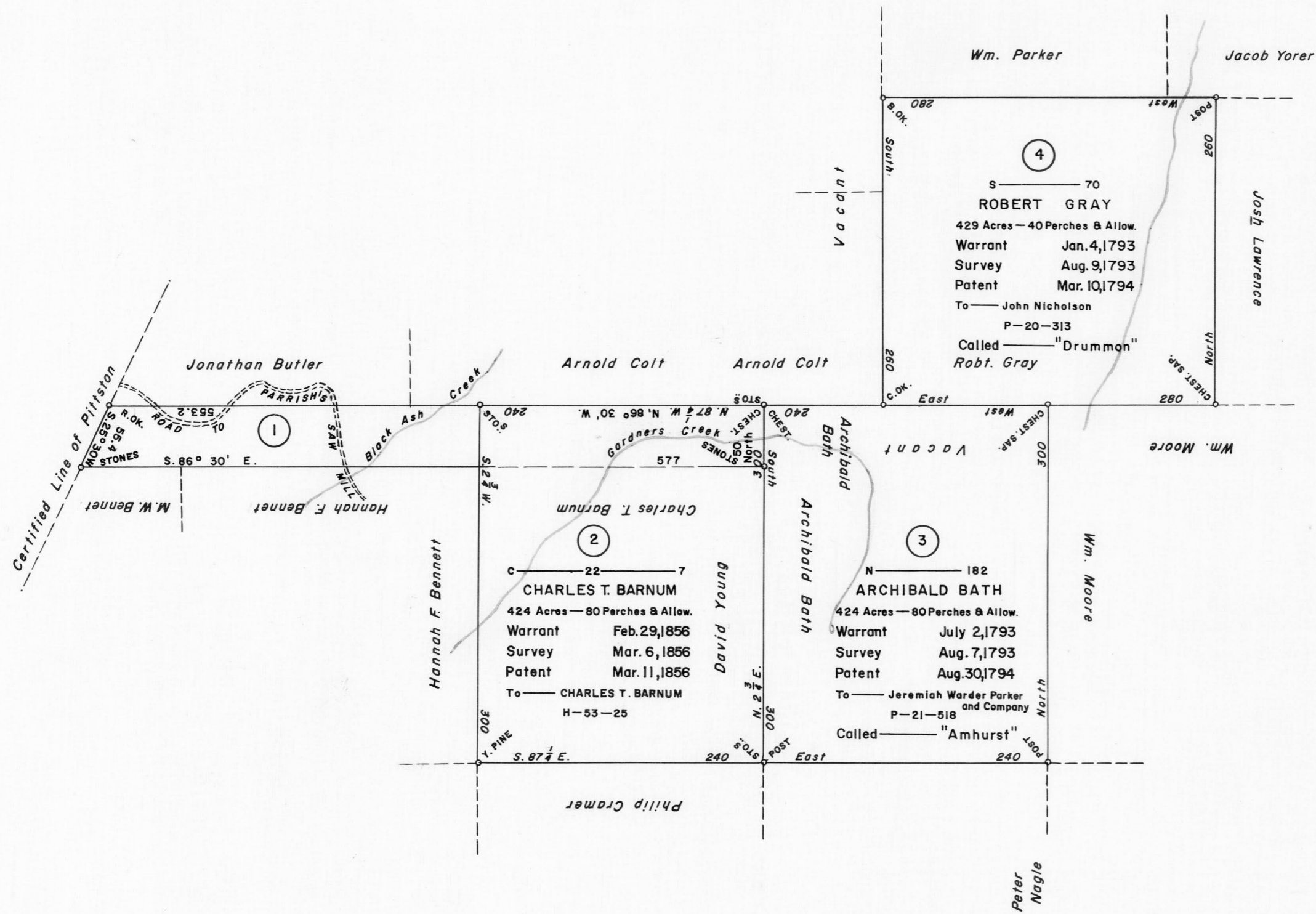


SCALE: 1" = 100 Rods.



①
 0 ————— 7 ————— 197
 J. P. WELLER
 166 Acres — 95 Perches & Allow.
 Warrant Jan. 26, 1875
 Survey Jan. 28, 1875
 Patent Feb. 16, 1875
 To — J. P. WELLER
 H-73-187

A CONNECTED DRAFT: of four (4) tracts of land in Luzerne County, which when surveyed, were situate as follows: one (1) in Luzerne County; one (1) in Pittston Township; and two (2) in Jenkins and Pittston Townships. The draft has been constructed from and compared with the original drafts on file in the Bureau of Land Records, Department of Internal Affairs, of the Commonwealth of Pennsylvania, under the direction of Anthony G. Reese, Director.

IN TESTIMONY WHEREOF: I have hereunto set my hand and caused the seal of the said Department to be affixed at Harrisburg, Pennsylvania this eleventh day of January A.D., one thousand nine hundred and sixty-three.



Genevieve Blatt
 Secretary of Internal Affairs.

By: *William C. Seyler*
 William C. Seyler, Deputy Secretary.

1576