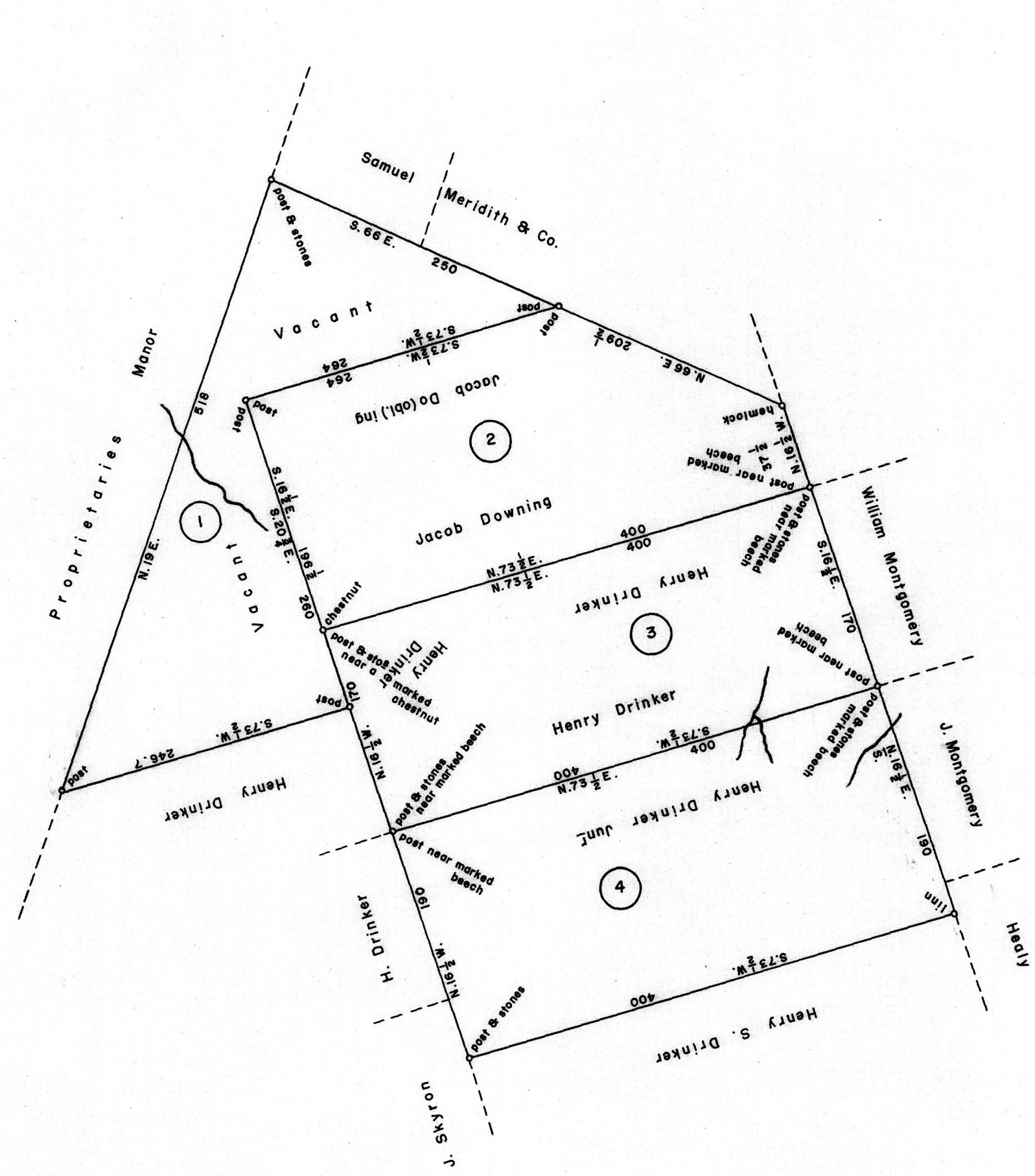


SCALE: 1" = 100 Rods.



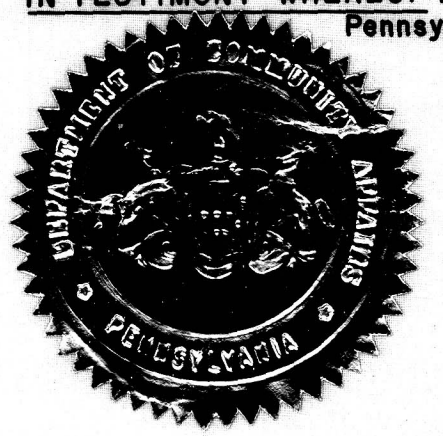
①
A—80—274
CADWALANER EVANS
367 ACRES—40 PERCHES & AIL.
WARRANT JULY 5, 1792
SURVEY SEPT. 24, 1793
PATENT MAY 15, 1795
To—Henry Drinker
P—25—271
"Clearfield"

②
I—377
JACOB DOWNING
400 ACRES & AIL. w.
WARRANT JULY 5, 1792
SURVEY OCT. 12, 1792
PATENT MAY 7, 1795
To—Henry Drinker
P—25—208
"Clearfield"

③
A—23—175
HENRY DRINKER
400 ACRES—150 PERCHES & AIL.
WARRANT JULY 5, 1792
SURVEY OCT. 13, 1792
PATENT MAY 7, 1795
To—Henry Drinker
P—25—207
"Hopewell"

④
I—378
HENRY DRINKER JR.
448 ACRES—39 PERCHES & AIL.
WARRANT JULY 5, 1792
SURVEY OCT. 13, 1792
PATENT MAY 7, 1795
To—Henry Drinker
P—25—211
"Coleshill"

A CONNECTED DRAFT: of four (4) tracts of land which, when surveyed, were situate near Equinunk Creek in Northampton County. The draft has been constructed from and compared with the original drafts on file in the Bureau of Land Records, Department of Community Affairs, Commonwealth of Pennsylvania, under the direction of James J. McFadden, Director.
IN TESTIMONY WHEREOF: I have hereunto set my hand and caused the seal of the said Department to be affixed at Harrisburg, Pennsylvania, this tenth day of November A.D., one thousand nine hundred and sixty nine.



JOSEPH W. BARR, JR.
Secretary of Community Affairs
By *G. E. Freeman*
G. E. FREEMAN, Deputy Secretary.

1718

64.2