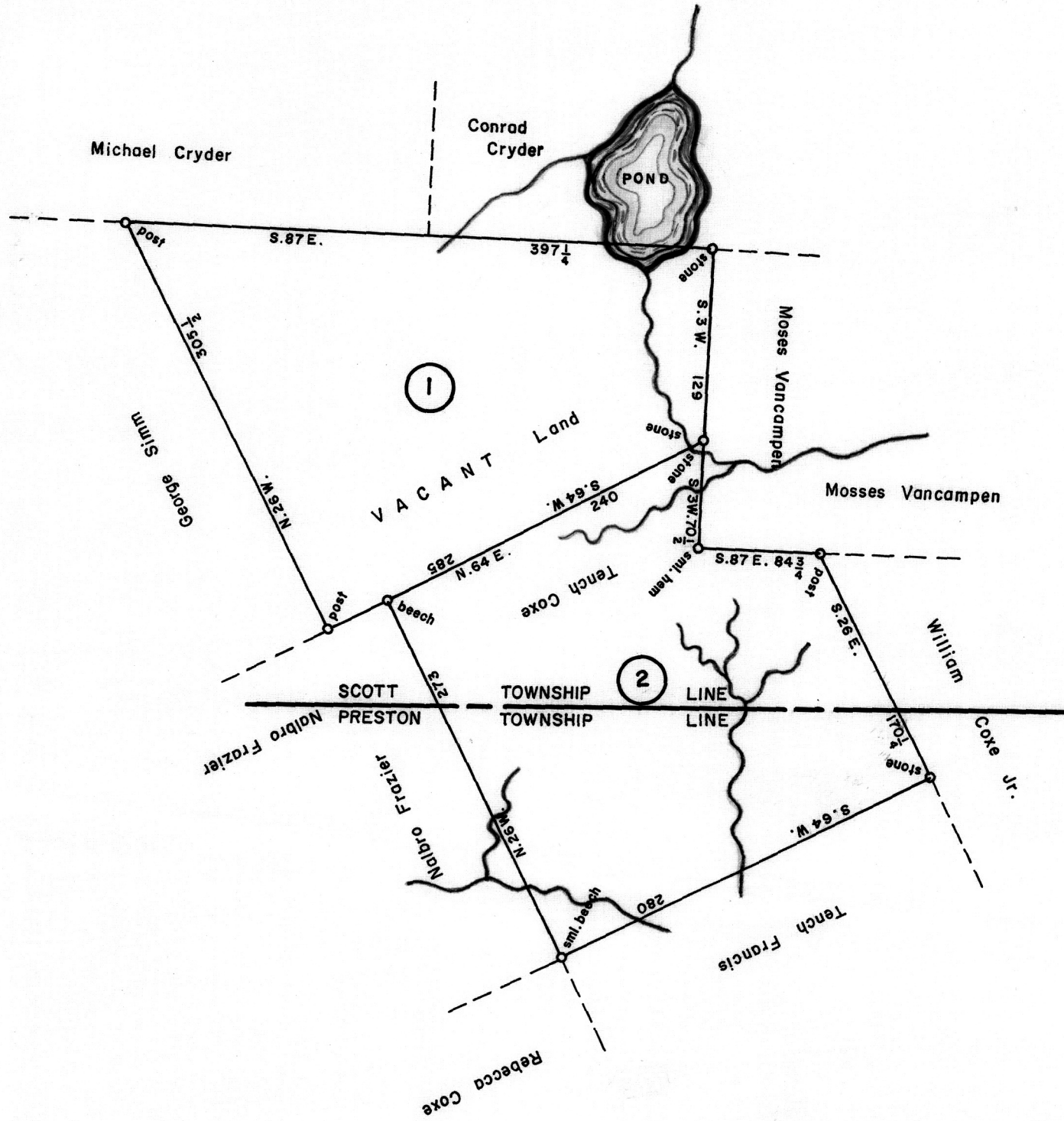


Scale: 1" = 100 Rods



①

A—89—143  
**ADAM HICKMAN**  
 407 ACRES—120 PERCHES & Allow  
 WARRANT AUG. 24, 1787  
 SURVEY NOV. 8, 1787  
 PATENT APR. 6, 1814  
 To—Abraham Kreider et.al.  
 H—10—560

②

C—33—248  
**TENCH COX**  
 420 ACRES—120 PERCHES & Allow  
 WARRANT AUG. 28, 1787  
 SURVEY OCT. 8, 1787  
 PATENT OCT. 29, 1850  
 To—Charles S. Cox  
 H—47—612

**NOTE:** Township Line taken from the John Torrey Map of Wayne County dated in 1872.

**A CONNECTED DRAFT:** of two (2) tracts of land, when surveyed, were situate in Scott and Preston Townships, Wayne County. The draft has been constructed from and compared with original drafts on file in the Bureau of Land Records, Department of Community Affairs, Commonwealth of Pennsylvania, under the direction of Edward D. Price, Director.

**IN TESTIMONY WHEREOF:** I have hereunto set my hand and caused the seal of the said Department to be affixed at Harrisburg, Pennsylvania, this eleventh day of December A.D., one thousand nine hundred and seventy four.

WILLIAM H. WILCOX  
 Secretary of Community Affairs

By *W. H. Hydemann Jr.*  
 W. H. HYDEMAN, JR., Executive Deputy Secretary

1722