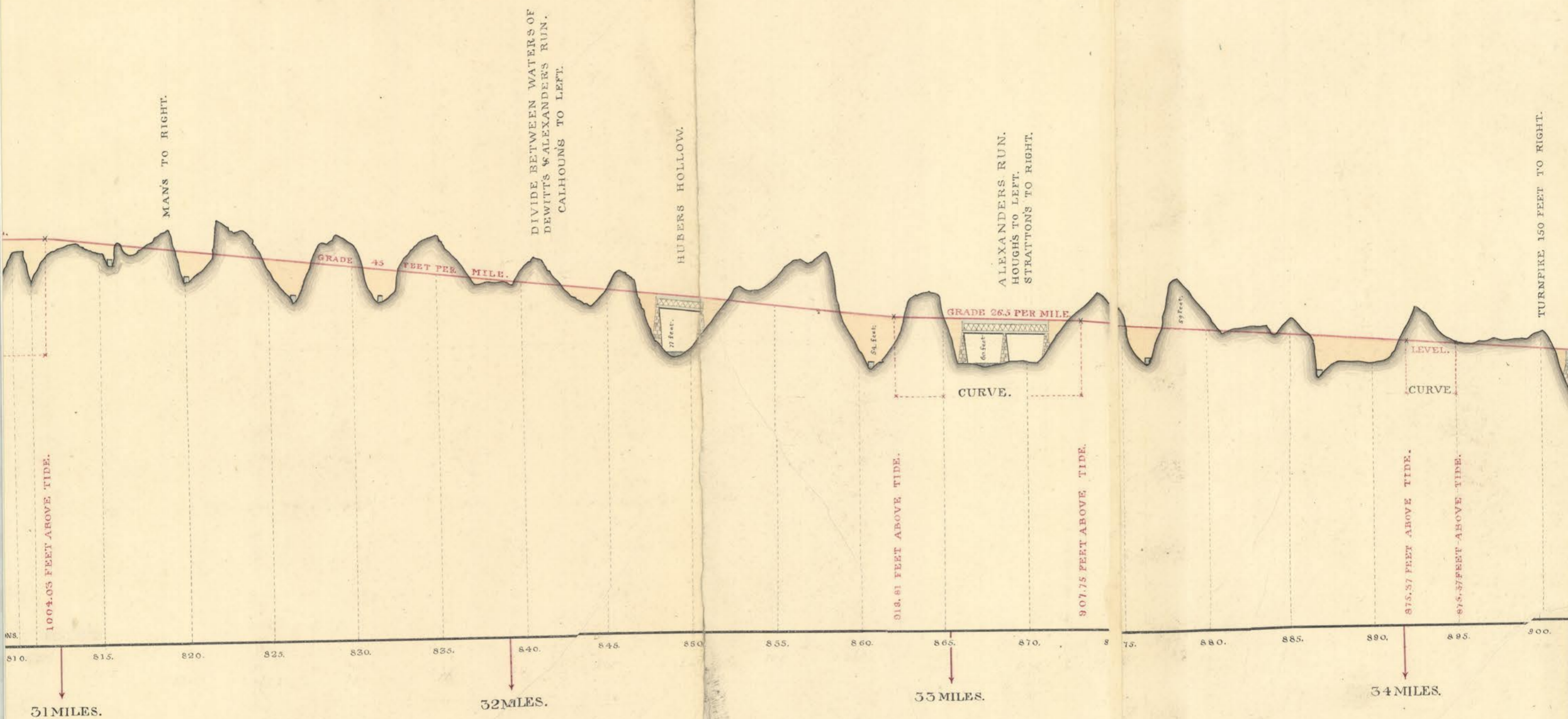


# PROF OF THE HARRISBURG & PITTSBURGH NORRIS R.R.

## No. 1



BY REFERENCE TO THE MAP IT WILL BE SEEN THAT THE LEVELS AND LIGHT GRADES INTRODUCED ABOVE, ARE UPON THOSE PORTIONS OF THE LINE WHERE THE RADIUS OF CURVATURE IS LESS THAN 1000 FEET. IT WAS FOUND NECESSARY IN SOME INSTANCES TO ASCEND THE VALLEYS OF THE MOUNTAIN STREAMS AND RETURN UPON THE OPPOSITE SIDE, IN ORDER TO AVOID THE INTRODUCTION OF HIGH AND EXPENSIVE BRIDGES.

SURVEYED UNDER THE DIRECTION  
OF  
Charles V. Schlatter,  
BY  
J. CLEMENTS STOCK  
PRINCIPAL ASSISTANT ENGINEER  
1859.