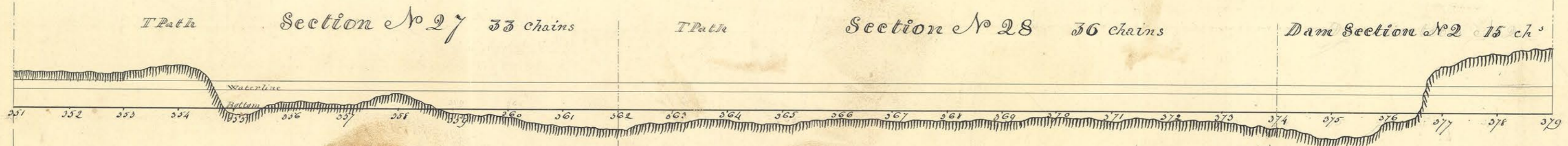
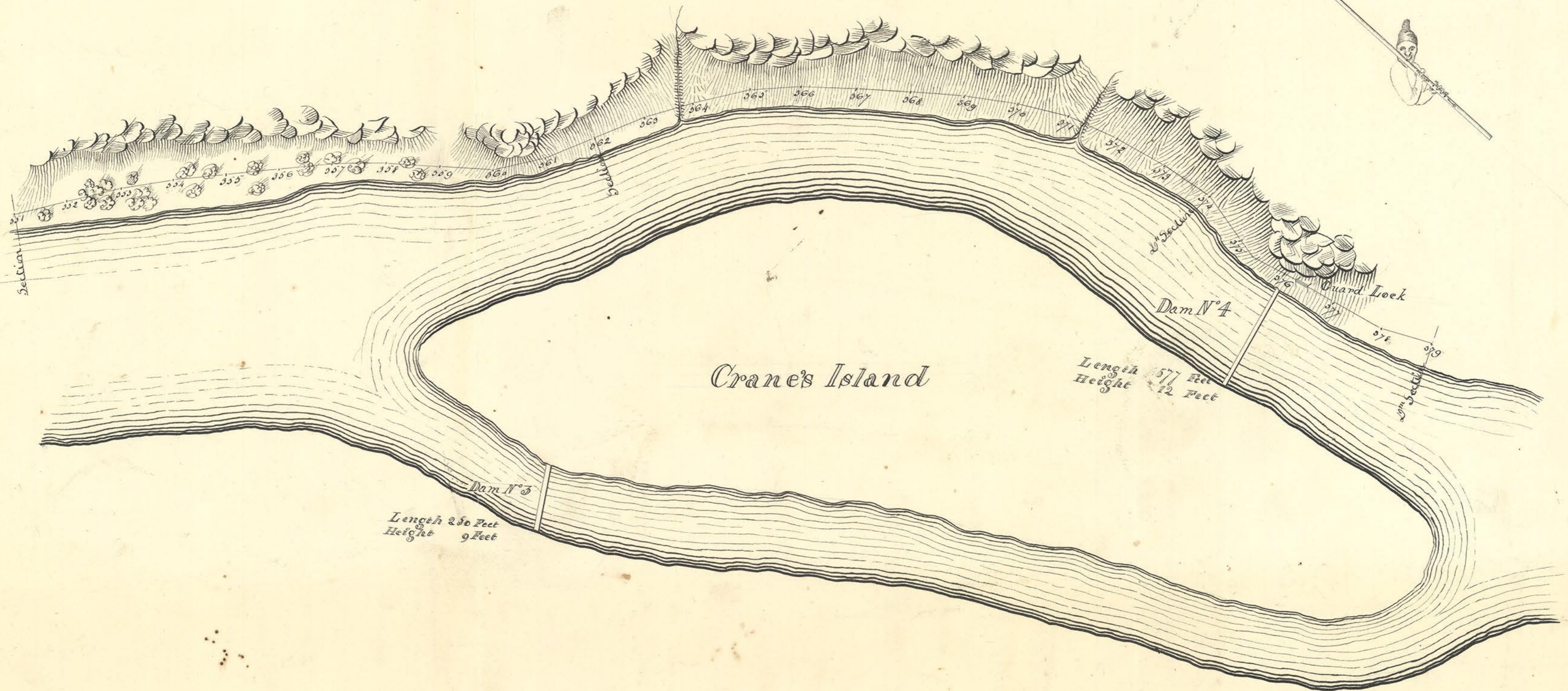


Map Book 7, h



**ESTIMATE.**

Crub's 33 Ch<sup>s</sup> Half  
Exc. Earth... 4,000 Yds  
Solid Rock... 6,000 "  
Emb<sup>t</sup>... 1,000 "

**ESTIMATE.**

Crub's 36 Ch<sup>s</sup> Half Crub's  
Exc. Earth... 3,000 Yds  
Solid Rock... 4,000 "  
Det<sup>d</sup> Rock... 3,000 "

**ESTIMATE.**

Crub's 15 Ch<sup>s</sup> Half Crub's  
Exc. Earth 8,130 Yds  
Solid Rock 5,000 "  
Det<sup>d</sup> do 2,000 "  
Emb<sup>t</sup> 2,000 "  
G. L. Wall 2,000 ft.