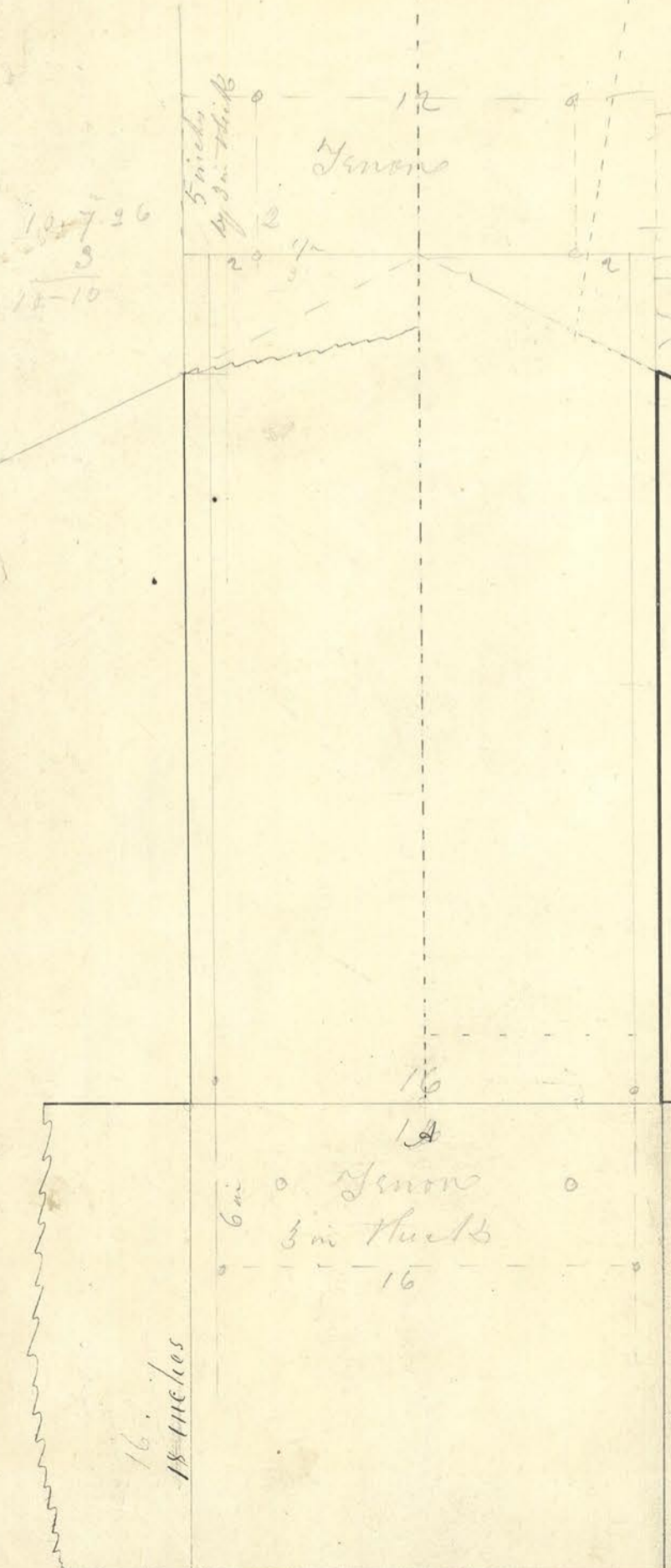
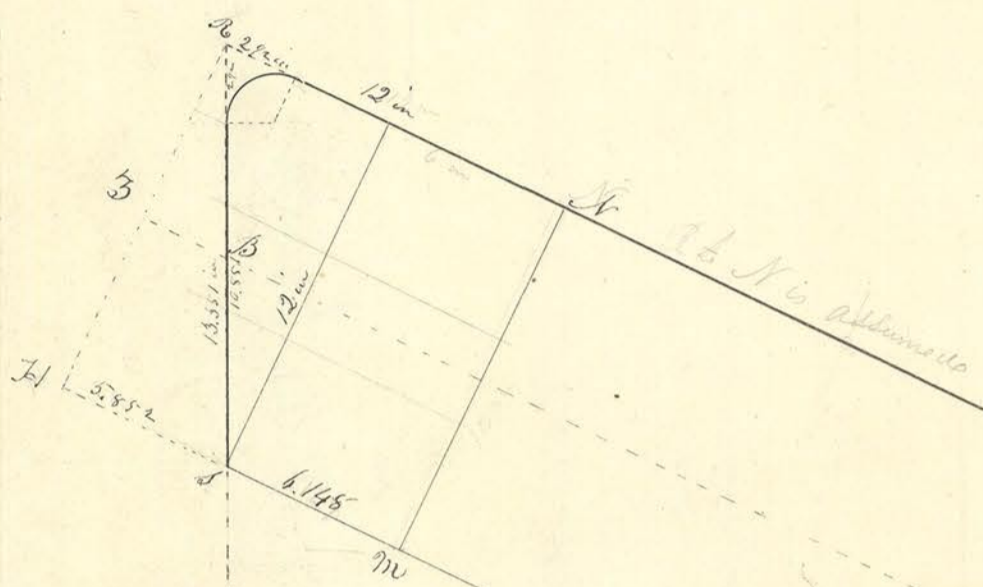


Plan of a Mill
 Angle of miter sill 26° - Recess 1/4 inches

From	B to C	10.66 feet
	b to c	2.92 inches
	D to b	.66 "
	B to D	10 feet 7.26 "
	A to P	8 " 10.38 "
	W to Y	2.13 "
	B to S	2.976 "
	A to B	4 ft 10.561 "
	v to R	13.344 "
	S to B	6.672 "
	S to S	4 ft 3.888 "
	C to X	.44946
	b to x	$\frac{2.4336}{2062.6 \times 12} = 2.473$ inches
	H to I	5 feet 5.812
	S to M	6.148
	S to P	9 ft 10.38



18 inches
16