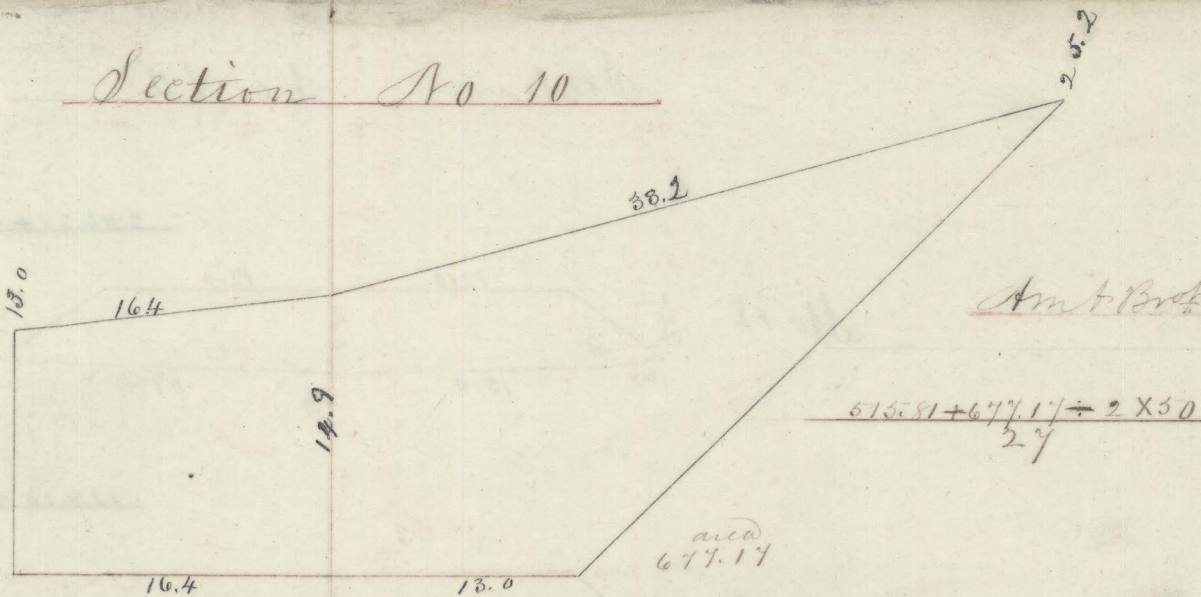


6

Section No 10

Cubic Yards
Exc Emb

+50

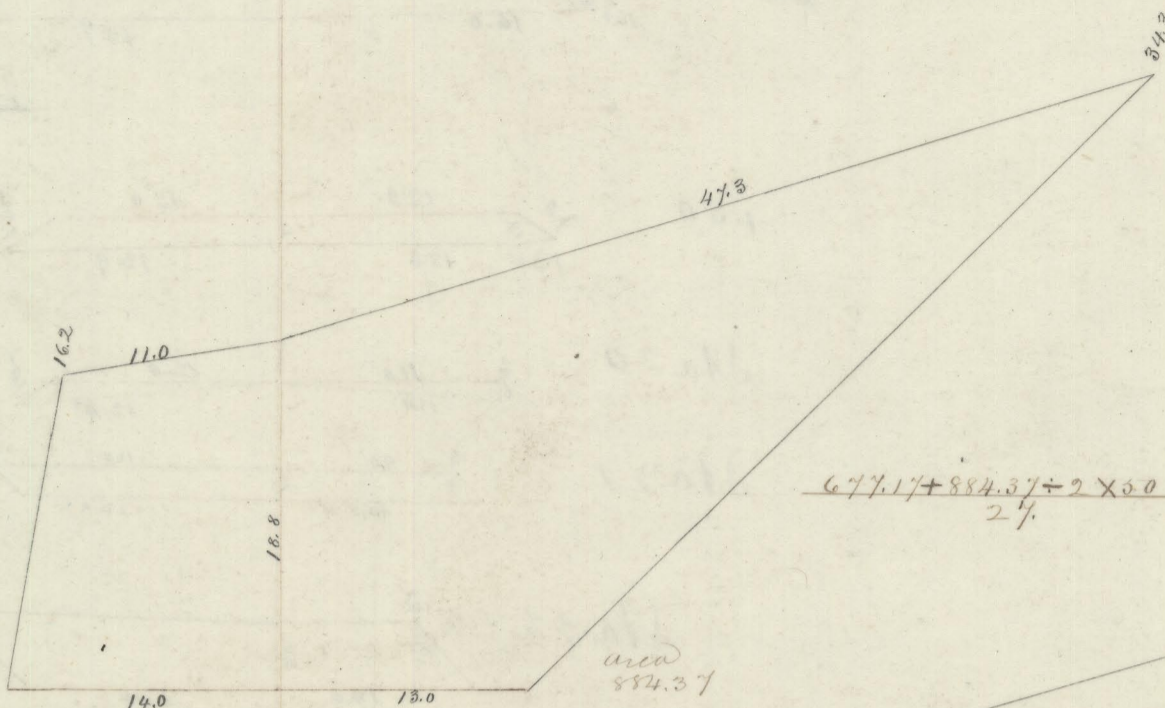


$$\frac{615.81 + 677.17}{2} \times 50$$

Am't Brk over 3587.52 5546.95

1104.61

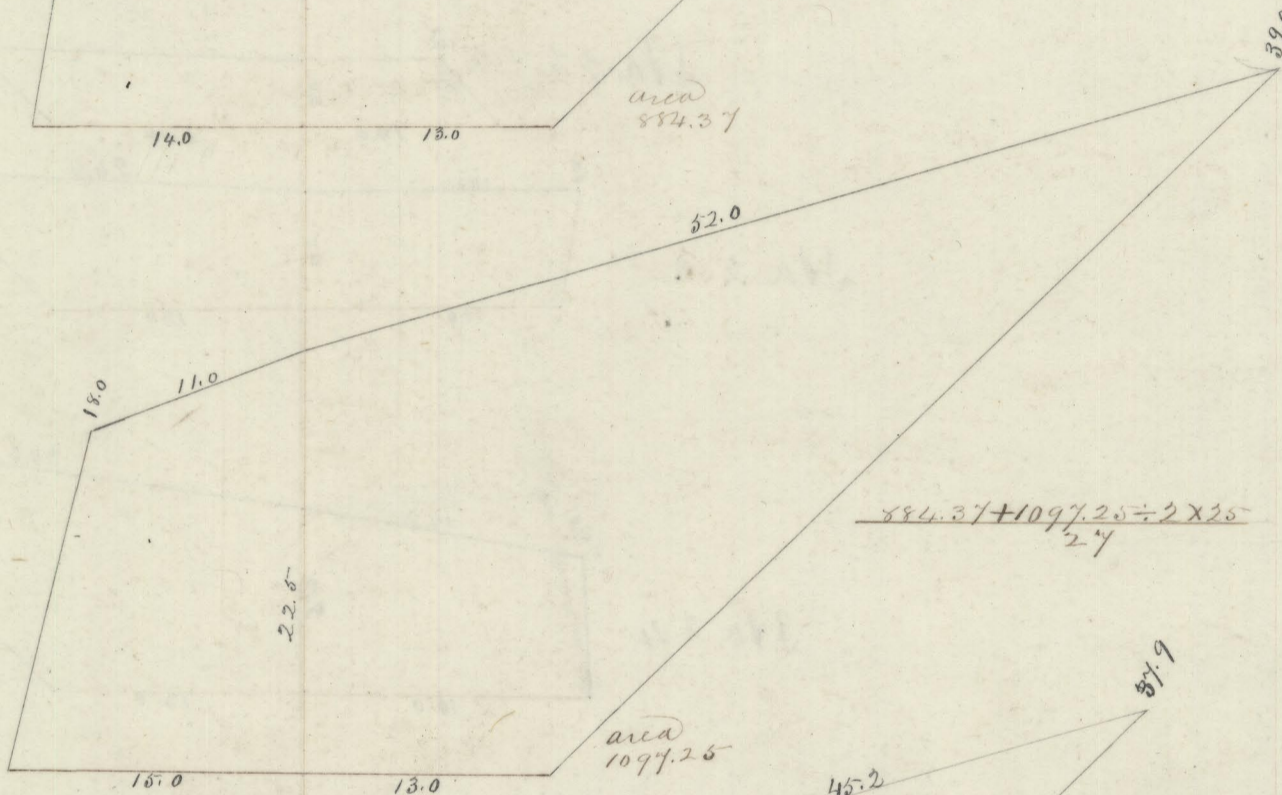
26



$$\frac{677.17 + 884.37}{2} \times 50$$

1445.87

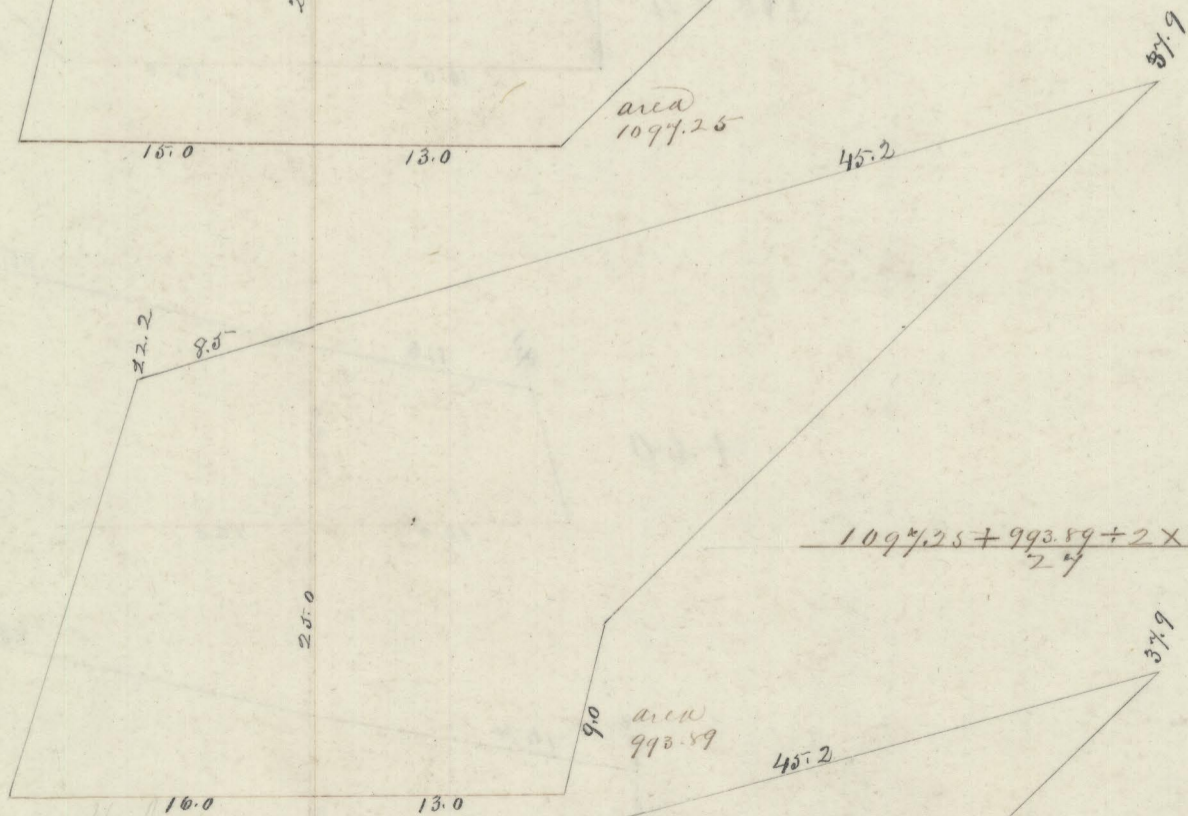
+25



$$\frac{884.37 + 1097.25}{2} \times 50$$

917.42

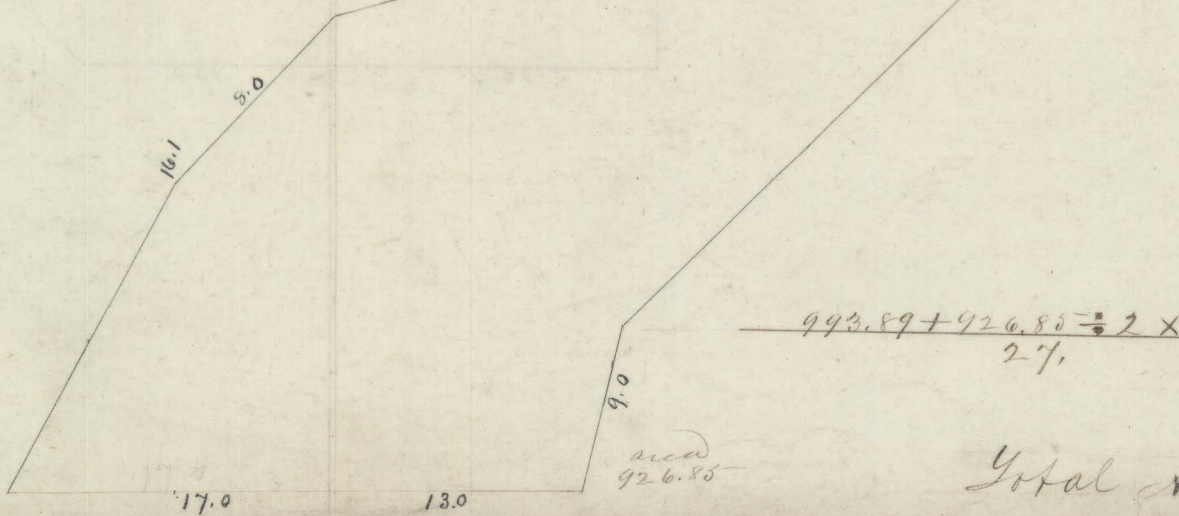
+50



$$\frac{1097.25 + 993.89}{2} \times 25$$

968.12

+70



$$\frac{993.89 + 926.85}{2} \times 20$$

724.72

Total Am't 8748.26 554