

Stations
No Dist

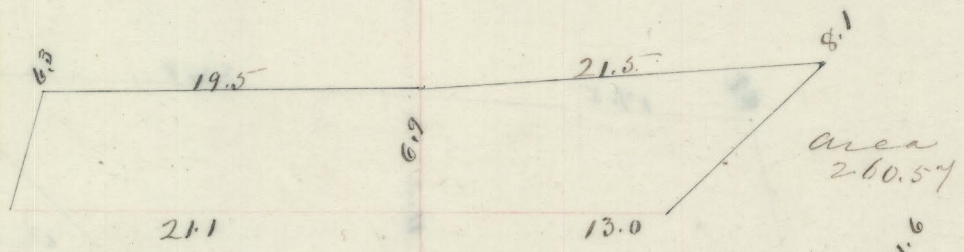
Section No 11

21

Amh Barb etc

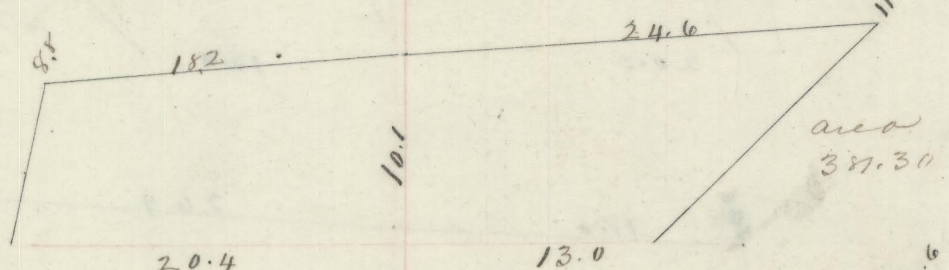
Cubic Yards	Emb
14667.52	47.819.18

+50 5-0



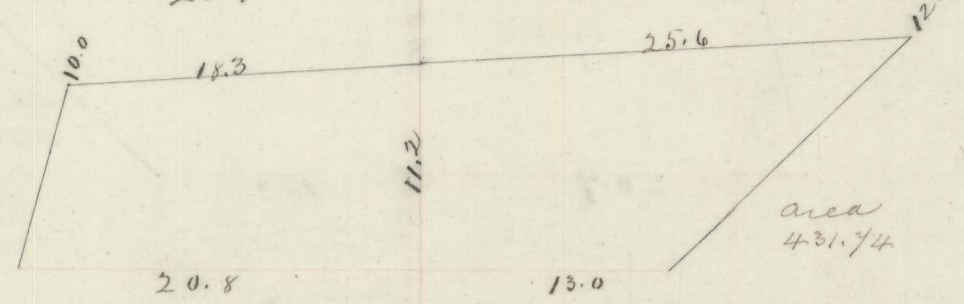
430.81

101 5-0



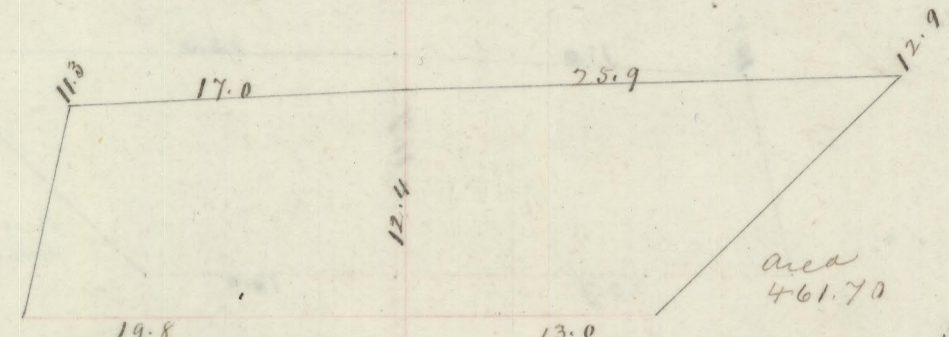
594.32

+50-50



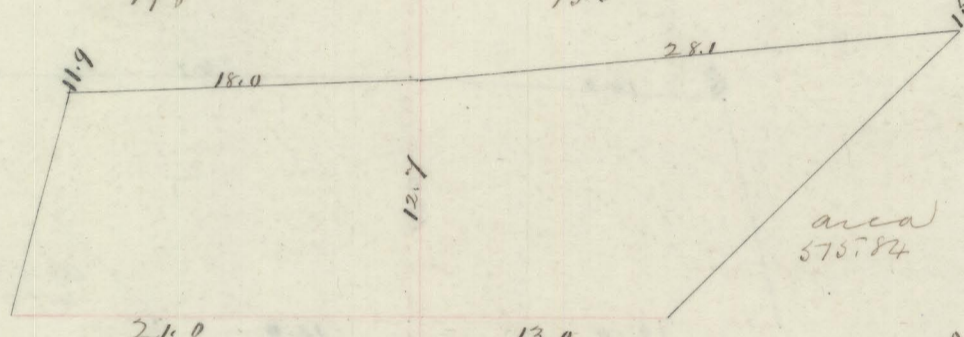
752.87

102 5-0



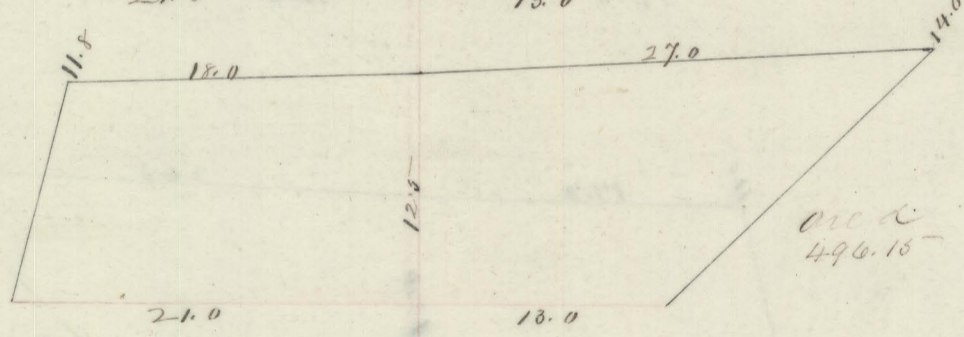
827.26

+50 5-0



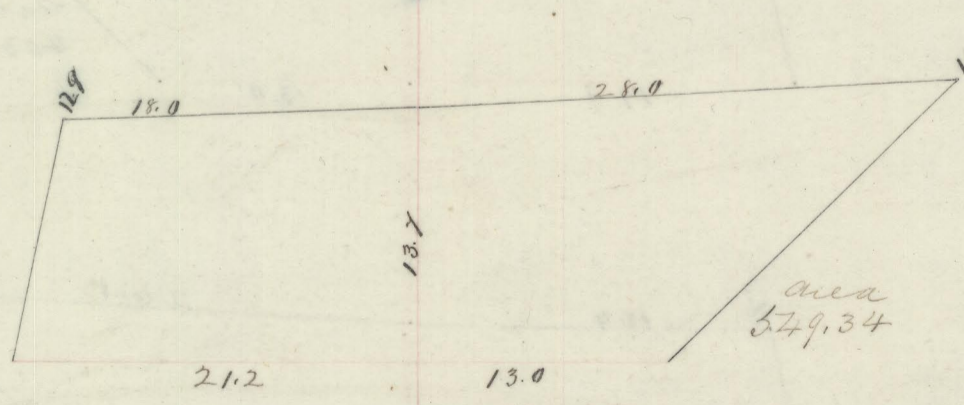
905.13

103 5-0



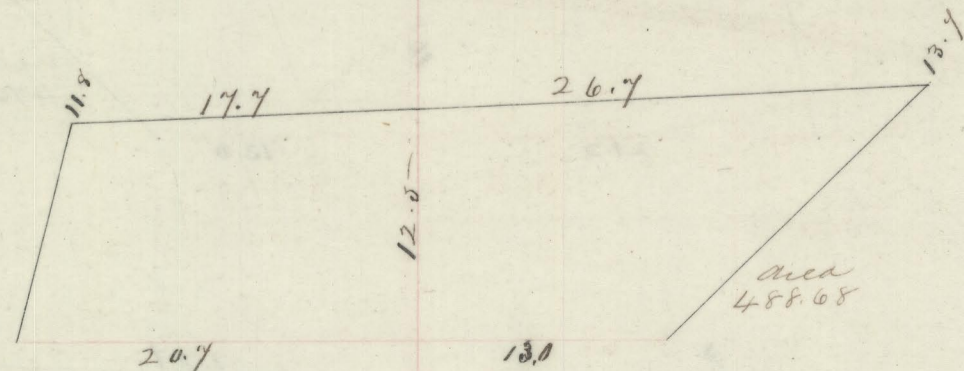
937.03

+50 5-0



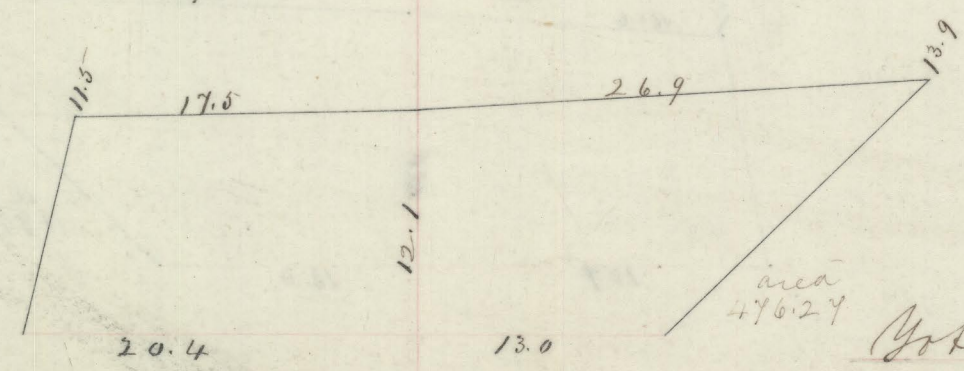
968.05

104 5-0



961.13

+50 5-0



893.47

Total Amh

21937.53 47.819.18