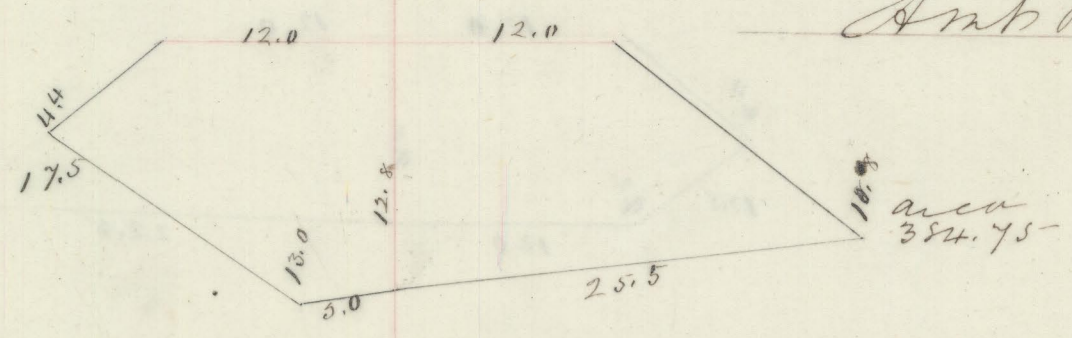


Stations  
No. dist

Section No 12

Cubic Yards  
Exc Emb

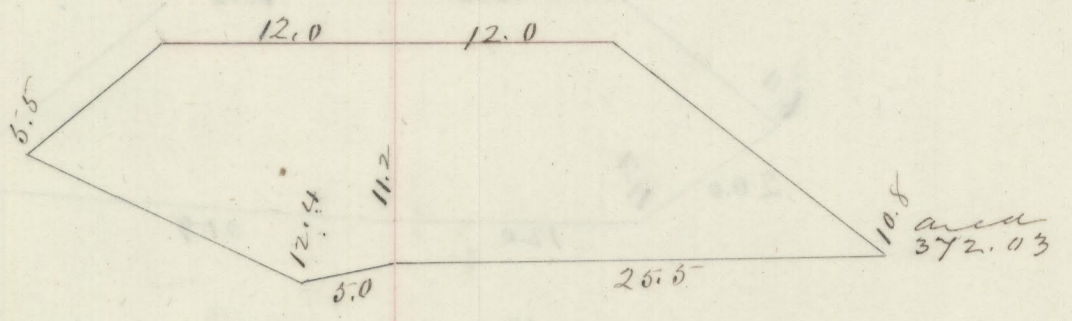
+50 5' 0"



Arch Brest over

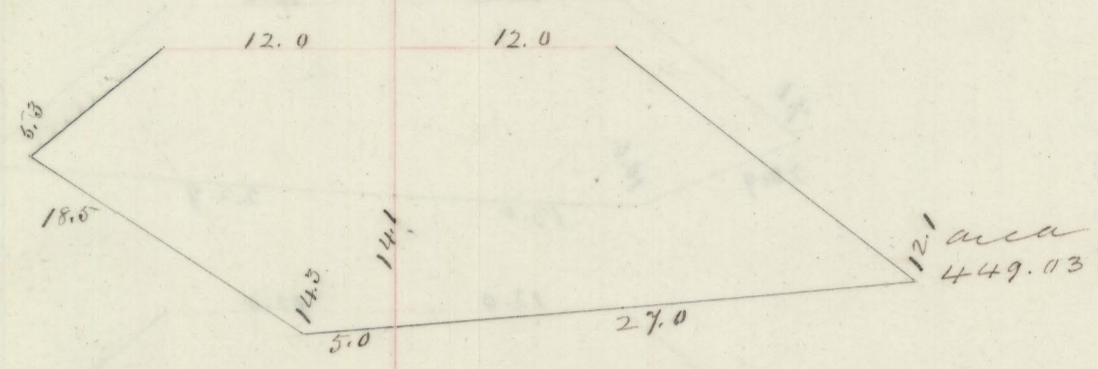
6987.45  
10875.07  
857.10

130 5' 0"



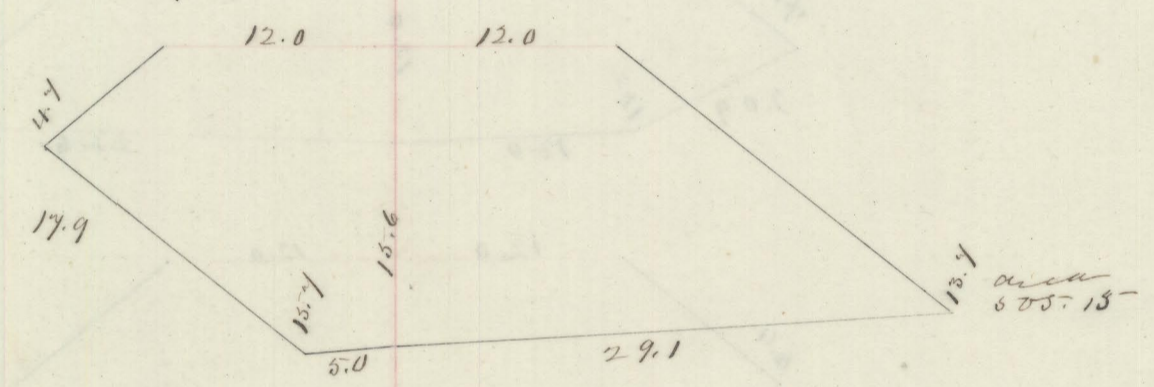
700.72

+52 5' 2"



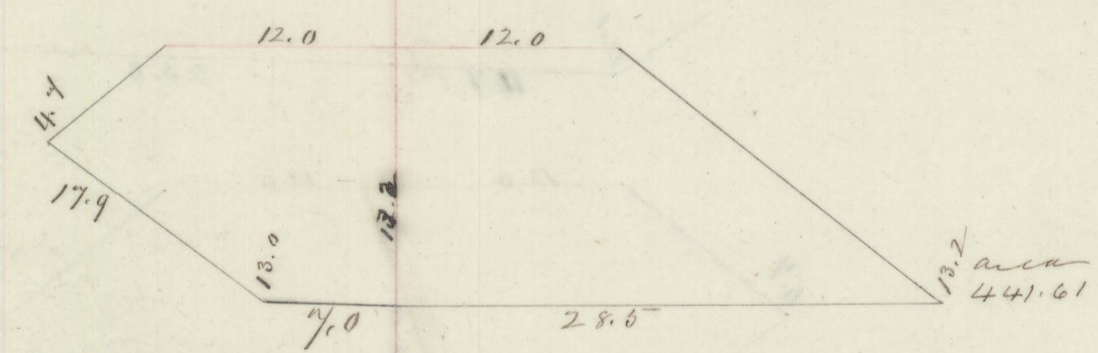
790.65

131 4' 8"



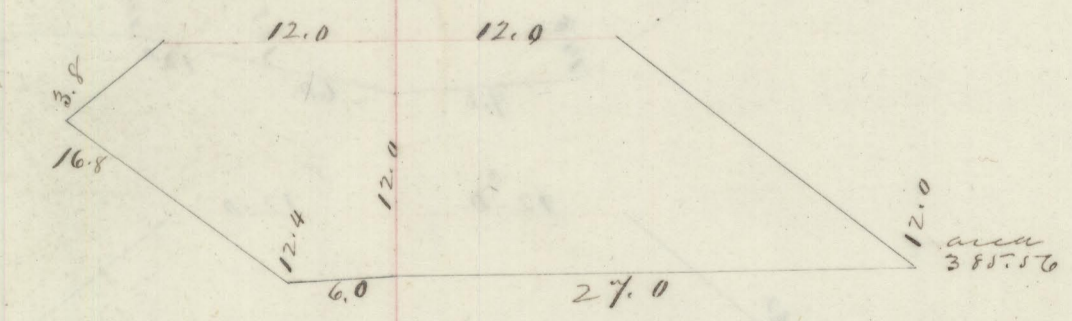
828.16

+25 2' 5"



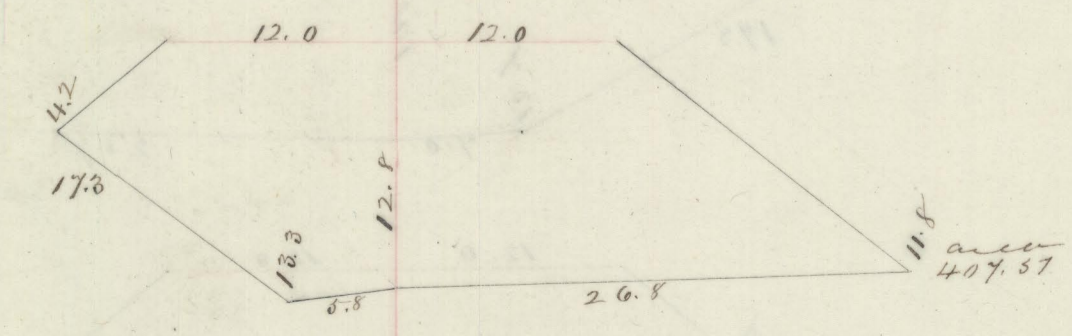
438.31

+50 2' 5"



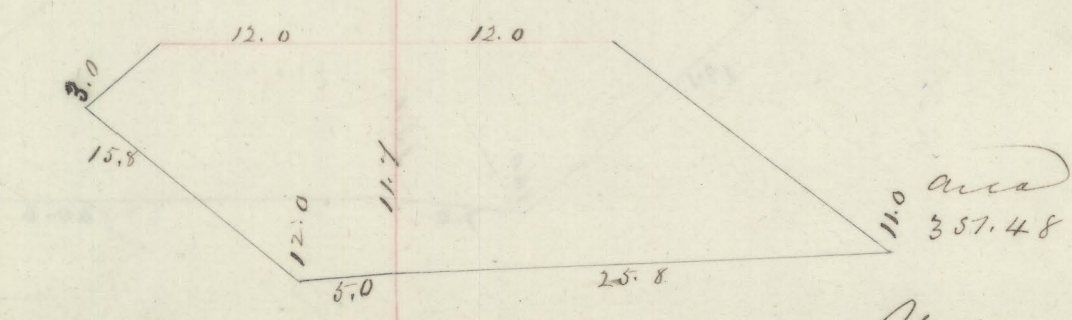
382.95

132 5' 0"



734.32

133 10' 0"



1405.53

Gate Arch

6987.45  
11032.81