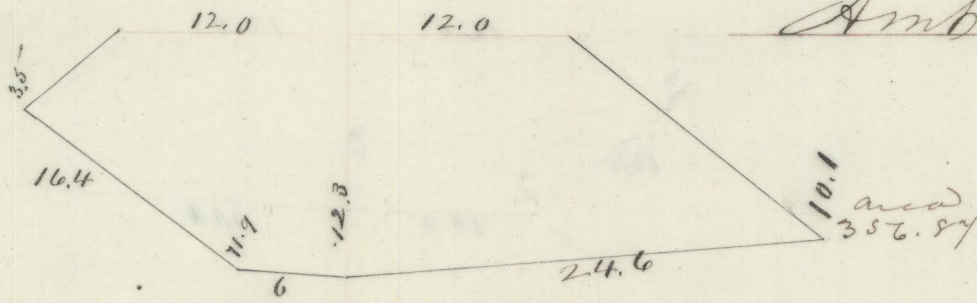


Stations  
No cuts

Section No 12

29 Cubic Yards  
Exc Em

+23 2 3/4

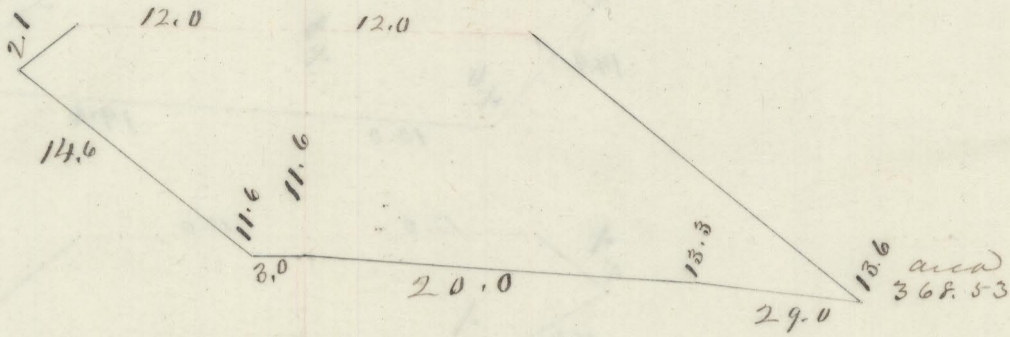


Amb Brod over

6.987.45 17.032.81

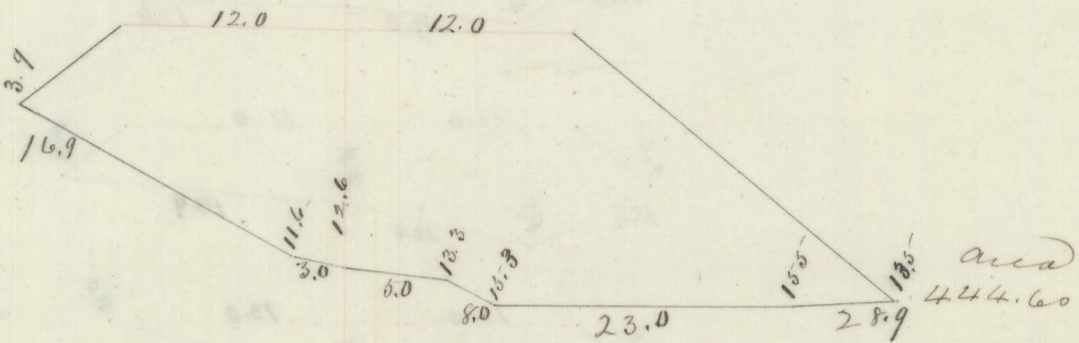
301.70

+40 17 "



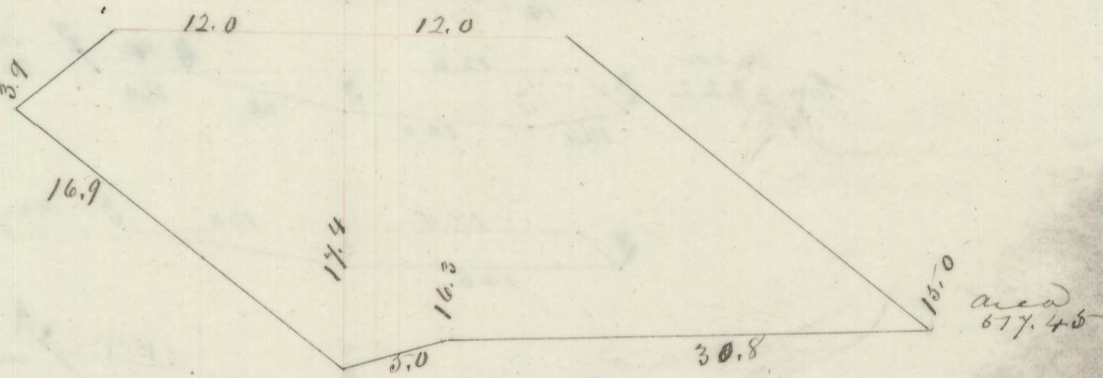
228.38

+55 15 "



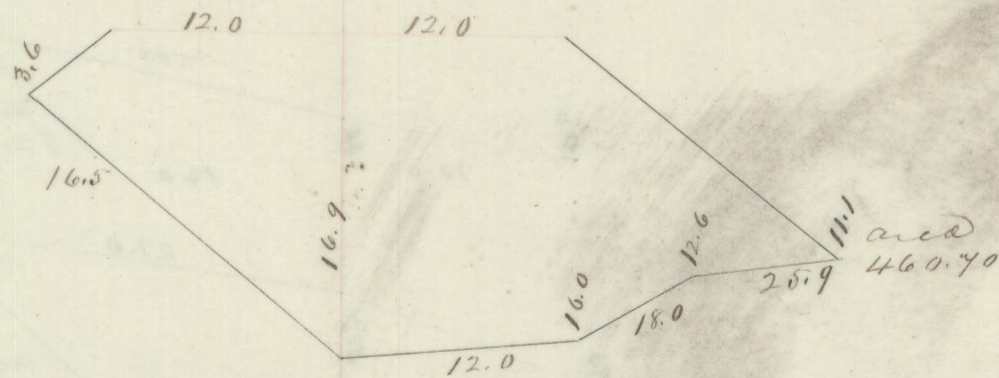
225.87

+75 20 "



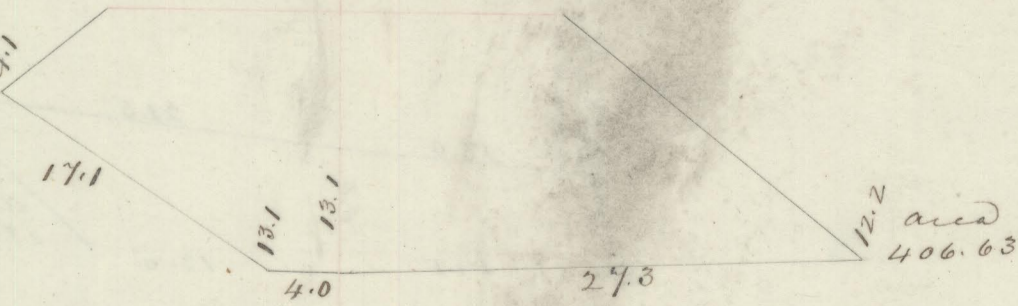
356.31

134 25 "



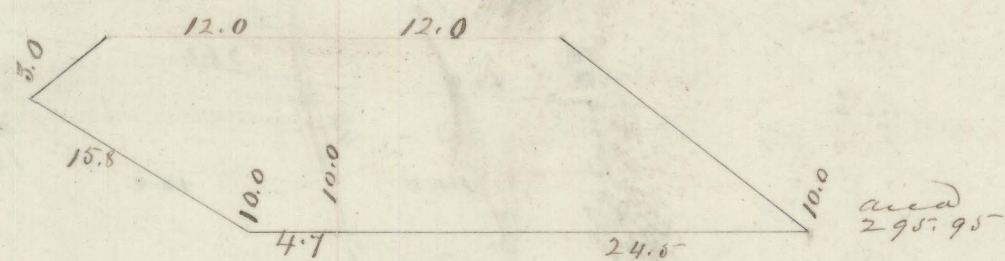
452.85

+50 30 "



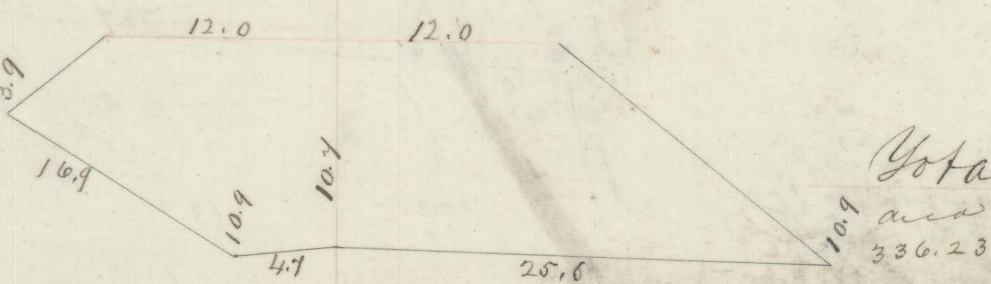
803.08

+75 25 "



325.27

135 25 "



292.65

Total Amb

6.987.45 20.018.92

area  
336.23