

Stations
No Dist

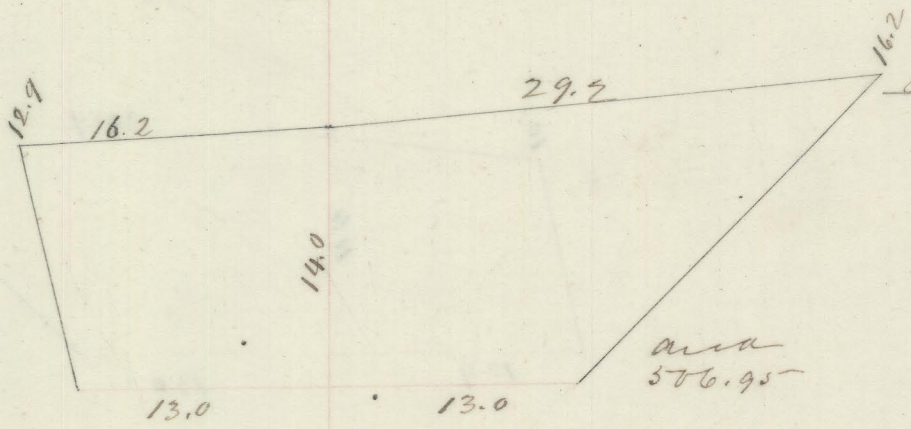
Section No 12

Cubic Units
Exc Emb

32

148 100ft

148



Amb Prob over

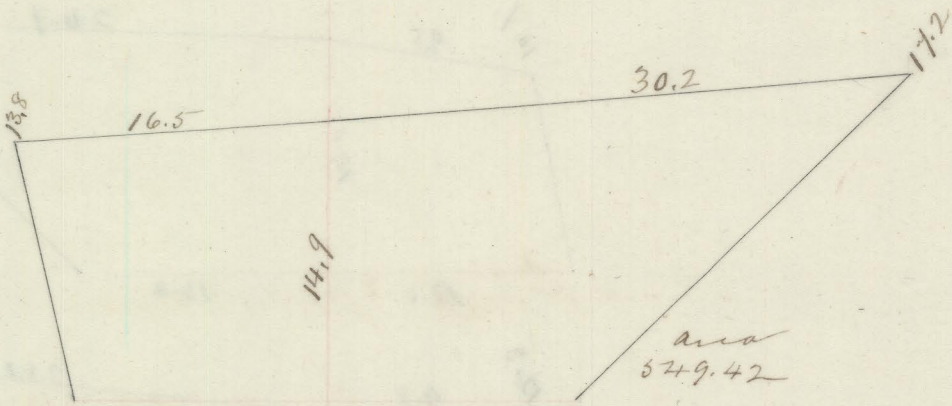
17.374.03 23.244.36

1999.26

1956.24

149 100"

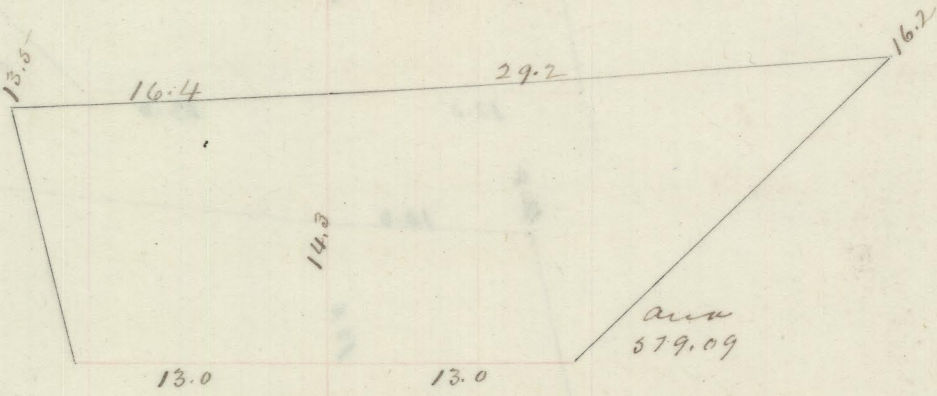
149



989.36

+50 50"

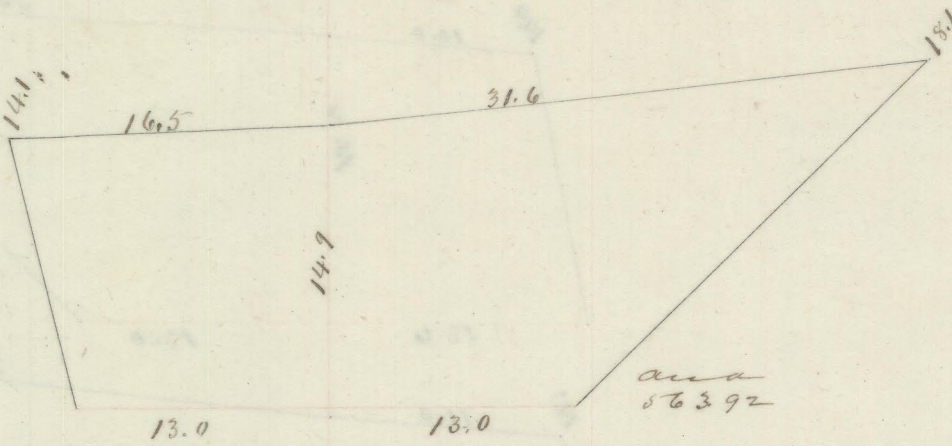
+50



1002.79

150 50"

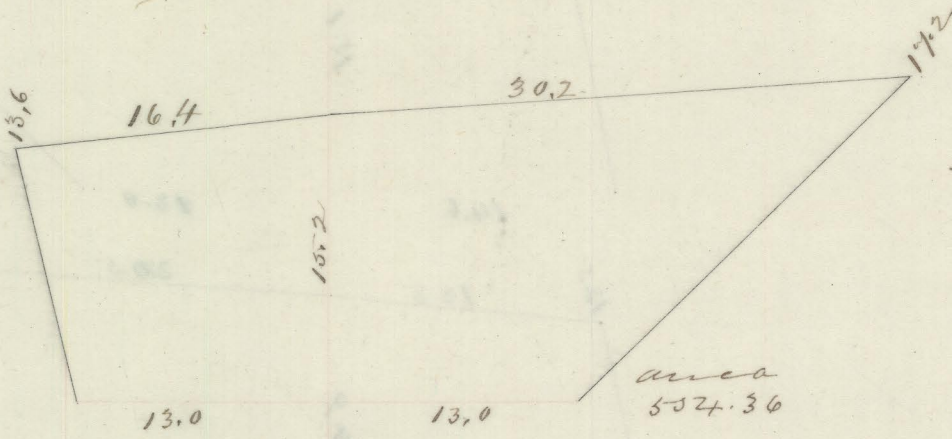
+50



1035.44

+50 50"

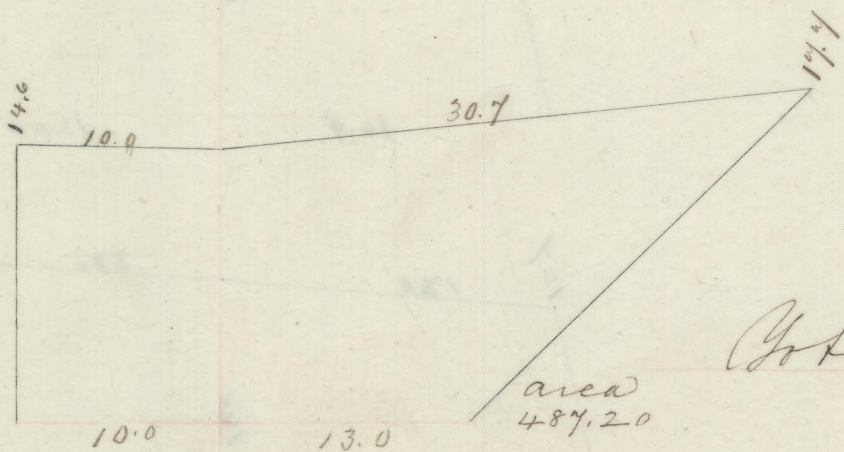
+50



385.76

+70 20"

Total Amb



24.642.88 23.244.36

1348.23