

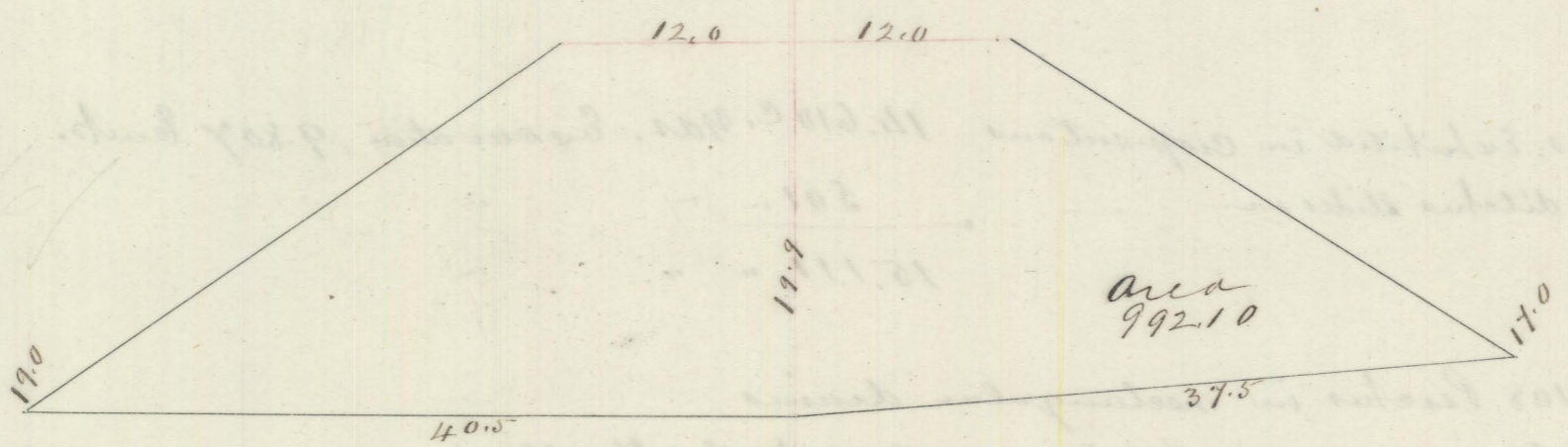
Stations
No Dist

46

Section No 15
Glover & Hubbs, Contractors.

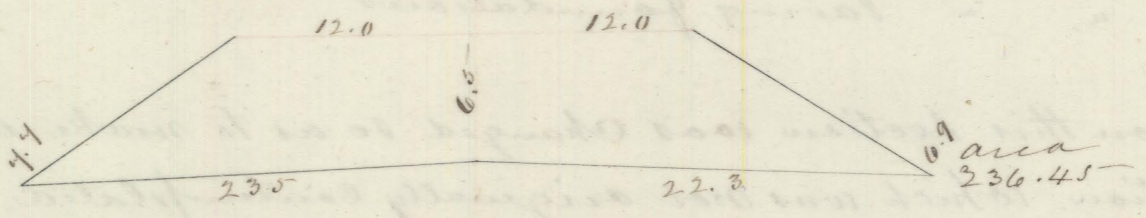
Cubic Yards
Exc Emb

+64



496.05

205 33ft



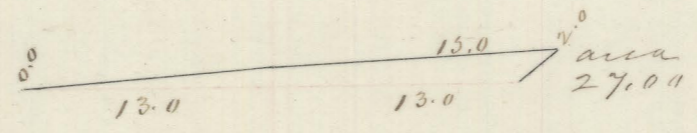
750.78

+24 24.0



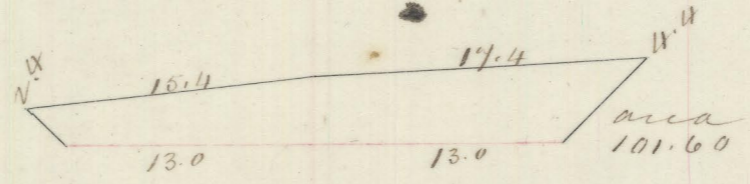
108.29

+32 8"



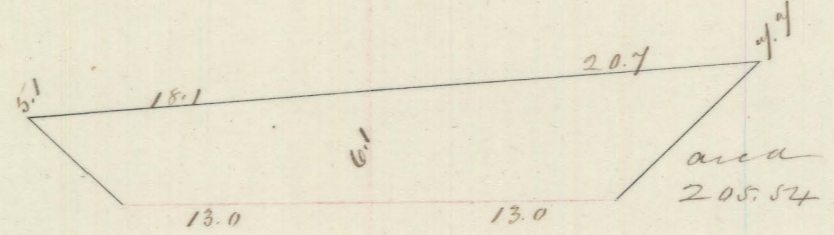
2.00

+40 8"



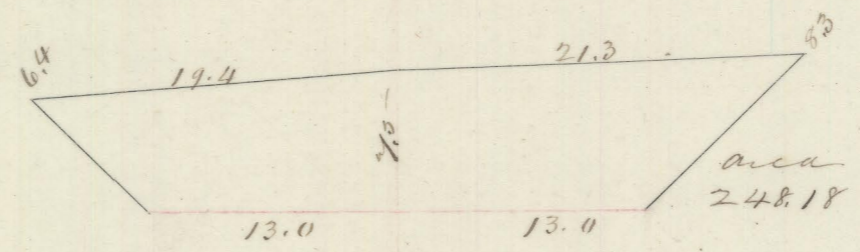
23.87

206 60"



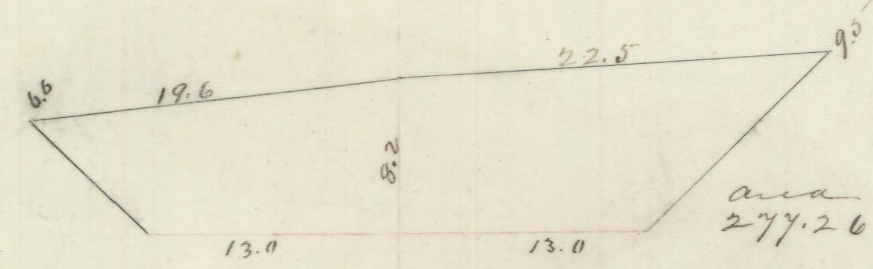
336.82

207 100



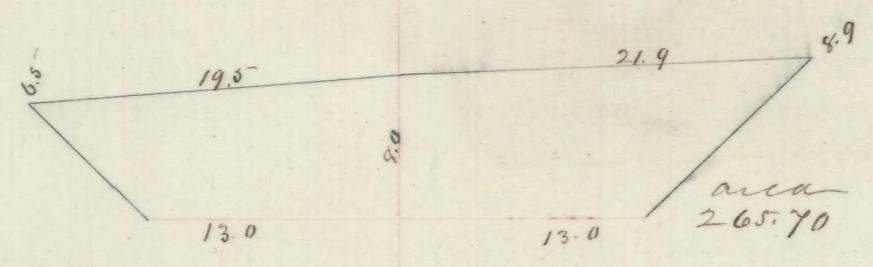
832.81

208 100



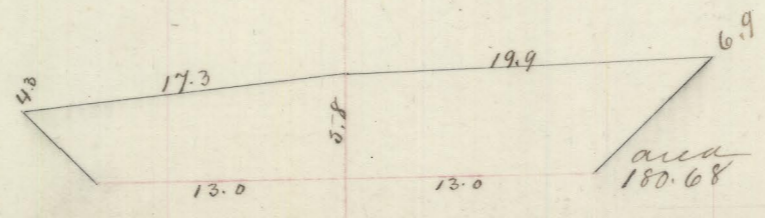
973.04

209 100



1005.48

210 100



826.63

Total Amt

4000.65 1355.12