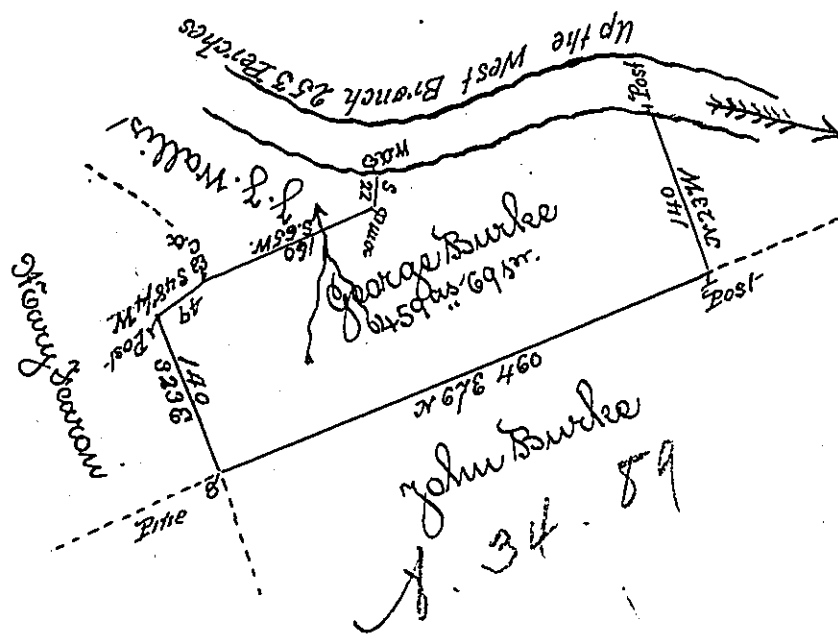


Courses up the
River
N 85 W 54
S 81 W 44
S 65 W 55
S 71 W 100
253



Situate on the west Branch of Susquehanna River in Bald Eagle Township
in North County Dow in ^{on the 22 day of September 1795} Lycoming Survey for George Burke by virtue
of his warrant bearing date on the 3 day of February 1794 Containing
four hundred fifty nine acres sixty nine Perches & allow.

To Daniel Brodhead Esq. }
Surveyor General }

Daniel Smith D.S.

IN TESTIMONY that the above is a copy of the original remaining on file in
the Department of Internal Affairs of Pennsylvania, made
conformably to an Act of Assembly approved the 16th day of
February, 1833, I have hereunto set my Hand and caused
the Seal of said Department to be affixed at Harrisburg,
this first day of March 1898

James W. Pitta
Secretary of Internal Affairs.