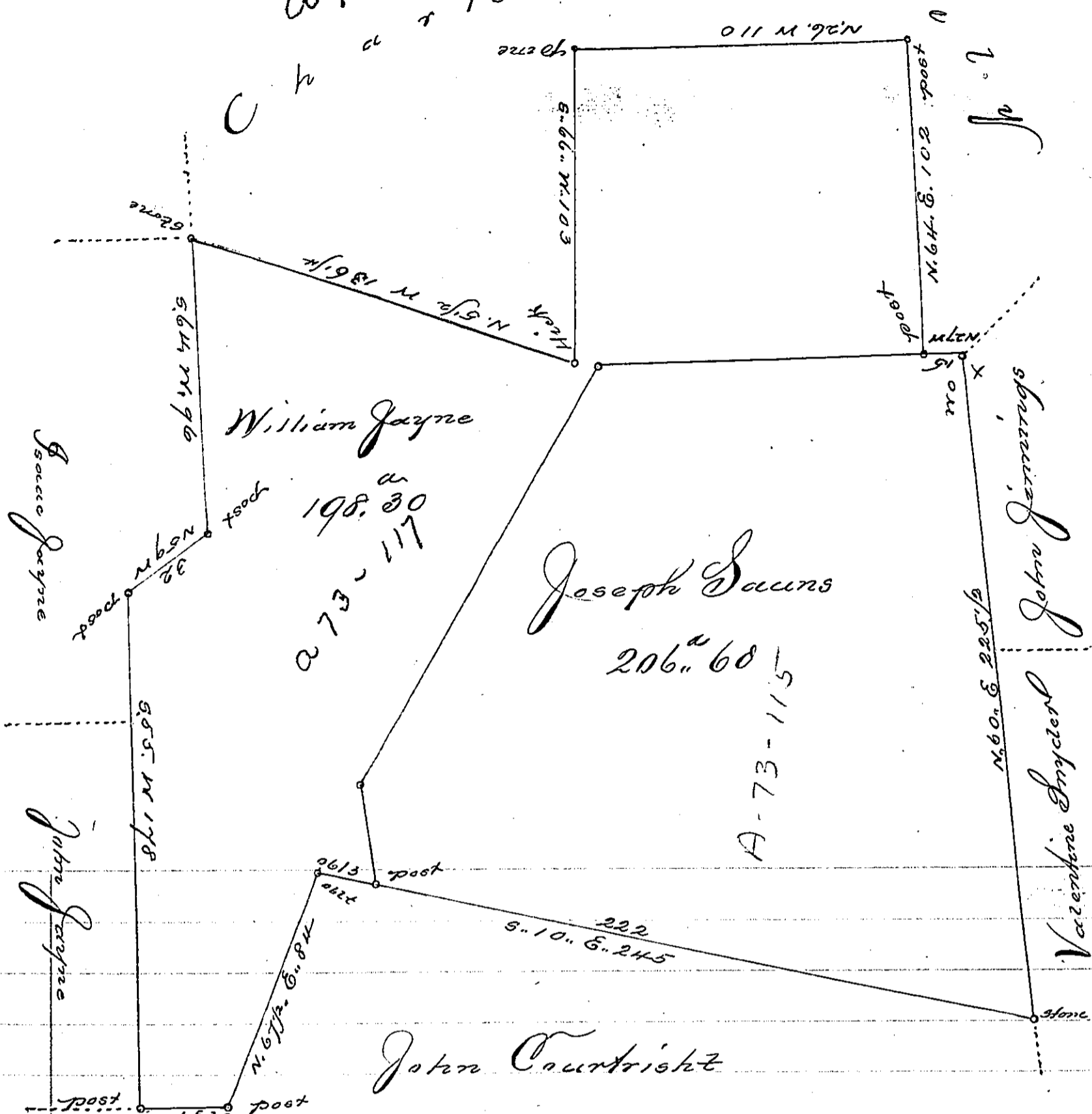


A 73-116
C h
C. S. e



A Draught of a tract of land situated in Middle Smithfield Township Wayne County, described as follows viz:

206⁰⁰ to Joseph Sauns on Warr. D^o of March 1746

198³⁰ to Wm. Jayne " " 28th Nov. 1754

404⁹⁰ acres and allowance

IN TESTIMONY that the above is a copy of the original remaining on file in the Department of Internal Affairs of Pennsylvania, made conformably to an Act of Assembly approved the 16th day of February, 1833, I have hereunto set my Hand and caused the Seal of said Department to be affixed at Harrisburg, this sixth day of August 1901.

James W. Latta
Secretary of Internal Affairs.