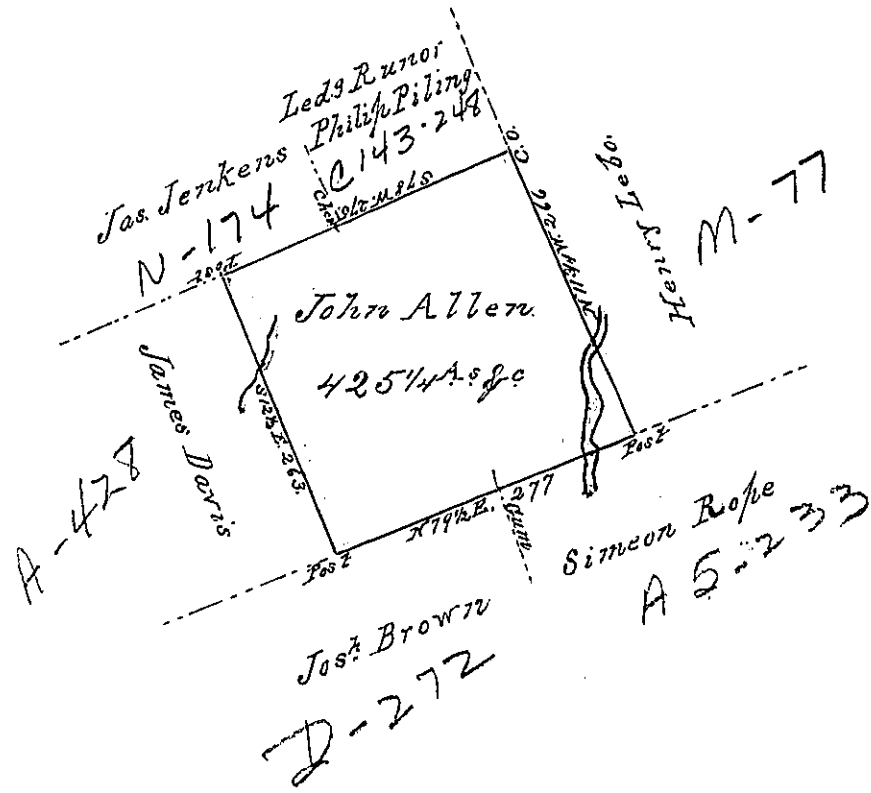


Sug. Loaf -
Luzerne.



A Draft of a tract of land called Situate on the Waters
 of Black Creek in the County of Northum^{ber} containing four Hundred
 and twenty five acs^{1/4} & Allowance. Surveyed for John Allen the
 8th day of June by virtue of a Warrant dated the 13th day of June
 1793.

To Daniel Brodhead Esq.
 Surv. Genl.

By Obliterated.

x Oct. 1793.

IN TESTIMONY that the above is a copy of the original remaining on file in the
 Department of Internal Affairs of Pennsylvania, made con-
 formably to an Act of Assembly approved the 16th day of
 February, 1833, I have hereunto set my Hand and caused
 the Seal of said Department to be affixed at Harrisburg, this

twentieth day of January 1835.

J. Simpson Africa,
 Secretary of Internal Affairs