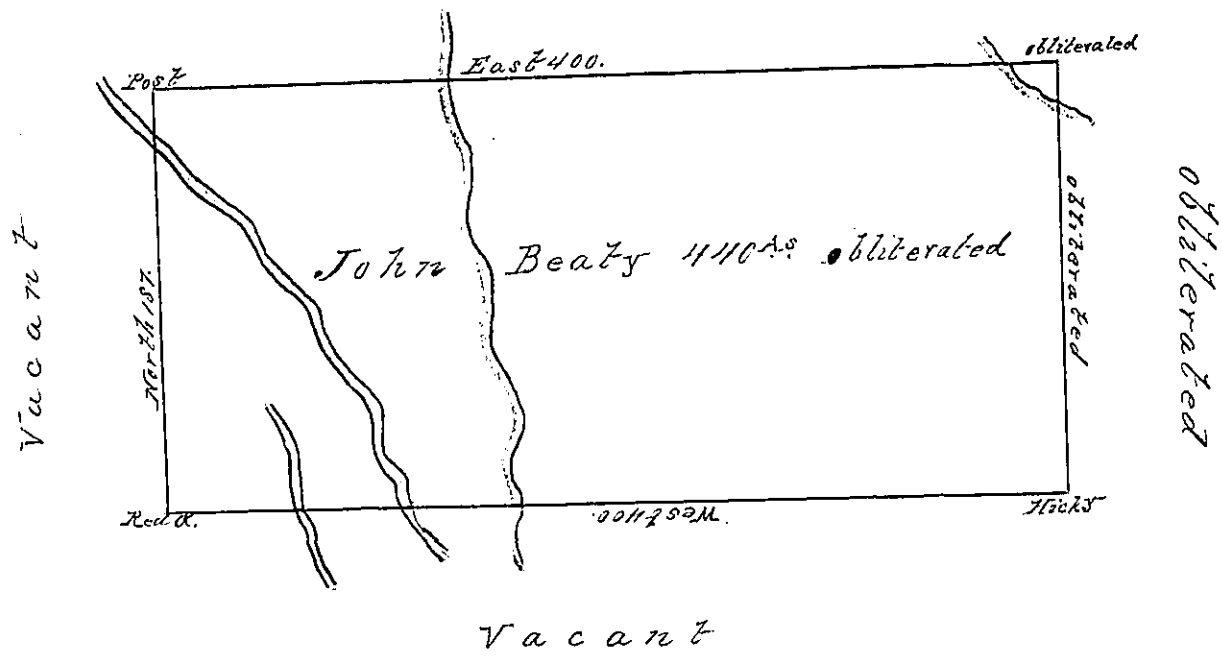


David McEligari



A Draught of a Tract of Land situate on the head  
 Water of Poplar Run and Cooke's Millers Creek in Bedford County,  
 containing Four hundred and forty One Acres and  $\frac{1}{4}$  of an Acre  
 Allowance of six per cent for Roads, Surveyed the Sept: 21<sup>st</sup> 1785.  
 In pursuance of a Warrant Dated the 1<sup>st</sup> of July 1784  
 W. B. This Land was before Surveyed  
 & Returned to George Crank Mamm  
 dated the 25<sup>th</sup> Sep: 1784.  
 John Lukens Esq: S. G. George Woods D. S.

IN TESTIMONY that the above is a copy of the original remaining on file in the  
 Department of Internal Affairs of Pennsylvania, made conformably to an Act of Assembly approved the 16th day of  
 February, 1833, I have hereunto set my Hand and caused  
 the Seal of said Department to be affixed at Harrisburg, this

twenty fifth day of February 1835.

J. Simpson Africa,  
 Secretary of Internal Affairs