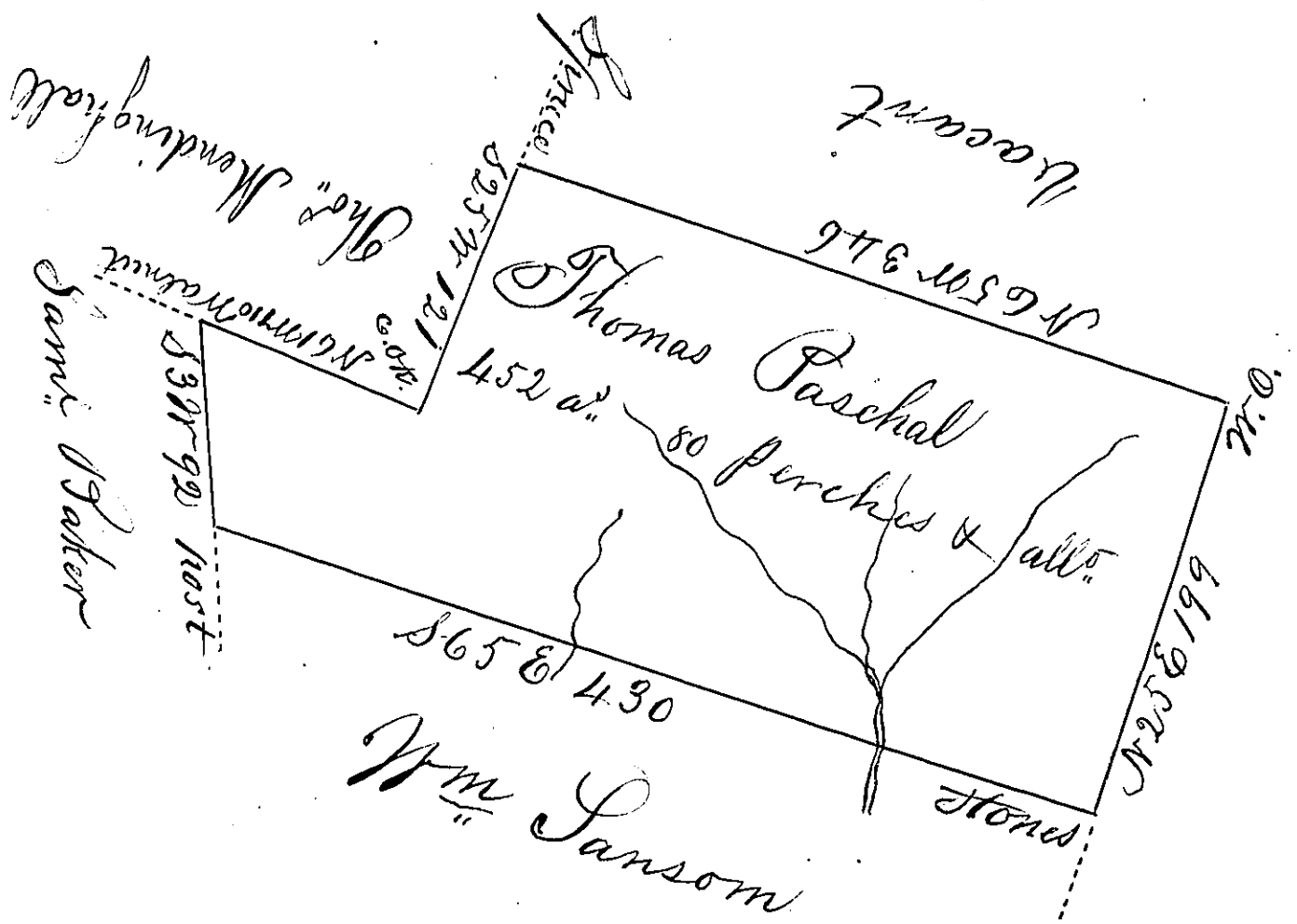


✓



By virtue of a warrant dated August 30th 1792.
 Surveyed 13th of November 1792 unto Thomas
 Paschal the above described tract of Four
 hundred and fifty two acres & 80 perches
 of land & usual allow^s. Situated
 adjoining land of Thomas Mendinhall & others
 on the waters of the East Branch of
 Fishing Creek in Luzerne County.
 To Daniel Brodhead Esq^r,
 Suror^r Gen^l of Pennesva^a. } By W^m Montgomery
 D. S.

IN TESTIMONY that the above is a copy of the original remaining on file in the
 Department of Internal Affairs of Pennsylvania, made con-
 formably to an Act of Assembly approved the 16th day of
 February, 1833, I have hereunto set my Hand and caused
 the Seal of said Department to be affixed at Harrisburg, this

Thirteenth day of February 1885.

J. Simpson Africa,
 Secretary of Internal Affairs